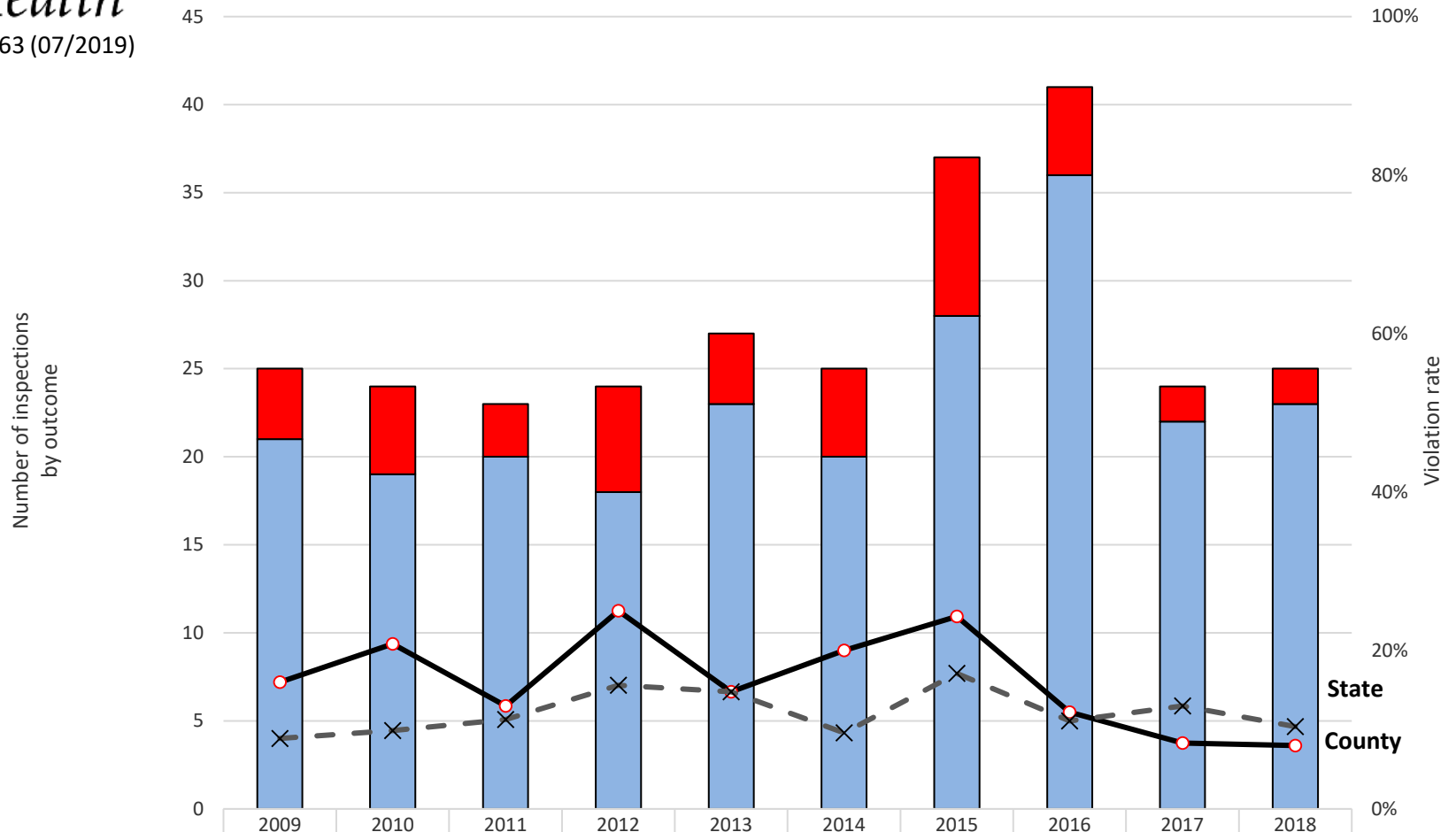


Sales of Tobacco to Minors Whatcom County and Washington State



■ # of county violations	4	5	3	6	4	5	9	5	2	2
■ # of compliant county checks	21	19	20	18	23	20	28	36	22	23
—●— County violation rate	16.0%	20.8%	13.0%	25.0%	14.8%	20.0%	24.3%	12.2%	8.3%	8.0%
-x- State violation rate	8.9%	9.9%	11.3%	15.6%	14.8%	9.6%	17.1%	11.1%	13.0%	10.4%

Source: Washington State Department of Health
 Synar Compliance Check Database 2009-2018

Technical note: Overall statewide rates are based on a yearly state Synar sample. County attempts represent only eligible and completed attempts. County specific rates are based on a county oversample that is not a part of the state sample. Counties were not oversampled in 2018.