

Hood Canal 8

Annual Shellfish Growing Area Review



Prepared By: Scott Chernoff

Area: Hood Canal 8

Year Ending: December 31, 2023

Classification: Approved, Conditionally Approved

Activities in the Growing Area in 2023

The growing area was sampled six times in accordance with the National Shellfish Sanitation Program (NSSP) Systematic Random Sampling criteria. Station 267, located in the Conditionally Approved area, was sampled five times in Open status. The Conditionally Approved area was closed from May 1 through September 30. The growing area was closed once for a total of seven days due to excessive rainfall (>3 inches of rain in 24 hours).

A routine three-year shoreline evaluation was completed, and no new pollution sources were identified.

Analytical Results of Water Samples

Table 1 summarizes the results of the last 30 samples collected from the area. This summary shows that all stations pass the NSSP water quality standard.

Change in Actual Pollution Sources that Impact the Growing Area

We currently have no information indicating that the area has new sources of pollution.

Classification Status

- Well within the classification standards
- Meets standards, but threatened with downgrade in classification
- Fails to meet current classification standards

Remarks and Recommendations

Table 1 shows that all stations meet the NSSP water quality standard for an Approved classification and the area is correctly classified.

Management Plan Evaluation

1. Have all parties involved complied with the conditions of the management plan..... Yes
2. Has reporting been adequate to manage the conditional area..... Yes
3. Does the area consistently meet approved area criteria when it is open for harvest Yes
4. Has a field inspection of critical pollution sources been conducted..... Yes

TABLE 1. Summary of Marine Water Data (SRS) for the Hood Canal 8 Growing Area

Sampling Event Type: Regulatory

Maximum Number of Samples: 30

Tides Included: All

Station Number	Classification	Date Range	Range (FC/100mL)	Geomean (FC/100mL)	Est. 90 th Percentile (FC/100mL)	Meets Standard
236	Approved	2/27/2019 - 12/20/2023	1.7 - 4.5	1.9	2.5	Y
252	Approved	2/27/2019 - 12/20/2023	1.7 - 7.8	1.9	3.1	Y
253	Approved	2/27/2019 - 12/20/2023	1.7 - 130.0	2.4	8.2	Y
254	Approved	2/27/2019 - 12/20/2023	1.7 - 17.0	2.0	3.7	Y
255	Approved	2/27/2019 - 12/20/2023	1.7 - 21.0	1.9	3.5	Y
256	Approved	2/27/2019 - 12/20/2023	1.7 - 11.0	2.0	3.6	Y
257	Approved	2/27/2019 - 12/20/2023	1.7 - 4.5	1.9	2.6	Y
258	Approved	2/27/2019 - 12/20/2023	1.7 - 14.0	1.9	3.3	Y
259	Approved	2/27/2019 - 12/20/2023	1.7 - 4.5	1.8	2.2	Y
260	Approved	2/27/2019 - 12/20/2023	1.7 - 2.0	1.7	1.8	Y
261	Approved	2/27/2019 - 12/20/2023	1.7 - 2.0	1.8	1.9	Y
262	Approved	2/27/2019 - 12/20/2023	1.7 - 11.0	2.0	3.8	Y
263	Approved	2/27/2019 - 12/20/2023	1.7 - 2.0	1.7	1.9	Y
264	Approved	2/27/2019 - 12/20/2023	1.7 - 2.0	1.7	1.9	Y
265	Approved	2/27/2019 - 12/20/2023	1.7 - 13.0	2.2	4.4	Y
266	Approved	2/27/2019 - 12/20/2023	1.7 - 2.0	1.7	1.9	Y
267	Conditionally Approved	2/27/2019 - 12/20/2023	1.7 - 4.0	1.8	2.2	Y

The standard for approved shellfish growing waters is fecal coliform geometric mean not greater than 14 organisms/ 100 mL with an estimated 90th percentile not greater than 43 organisms/ 100 mL. The above table shows bacteriological results in relation to program standards.

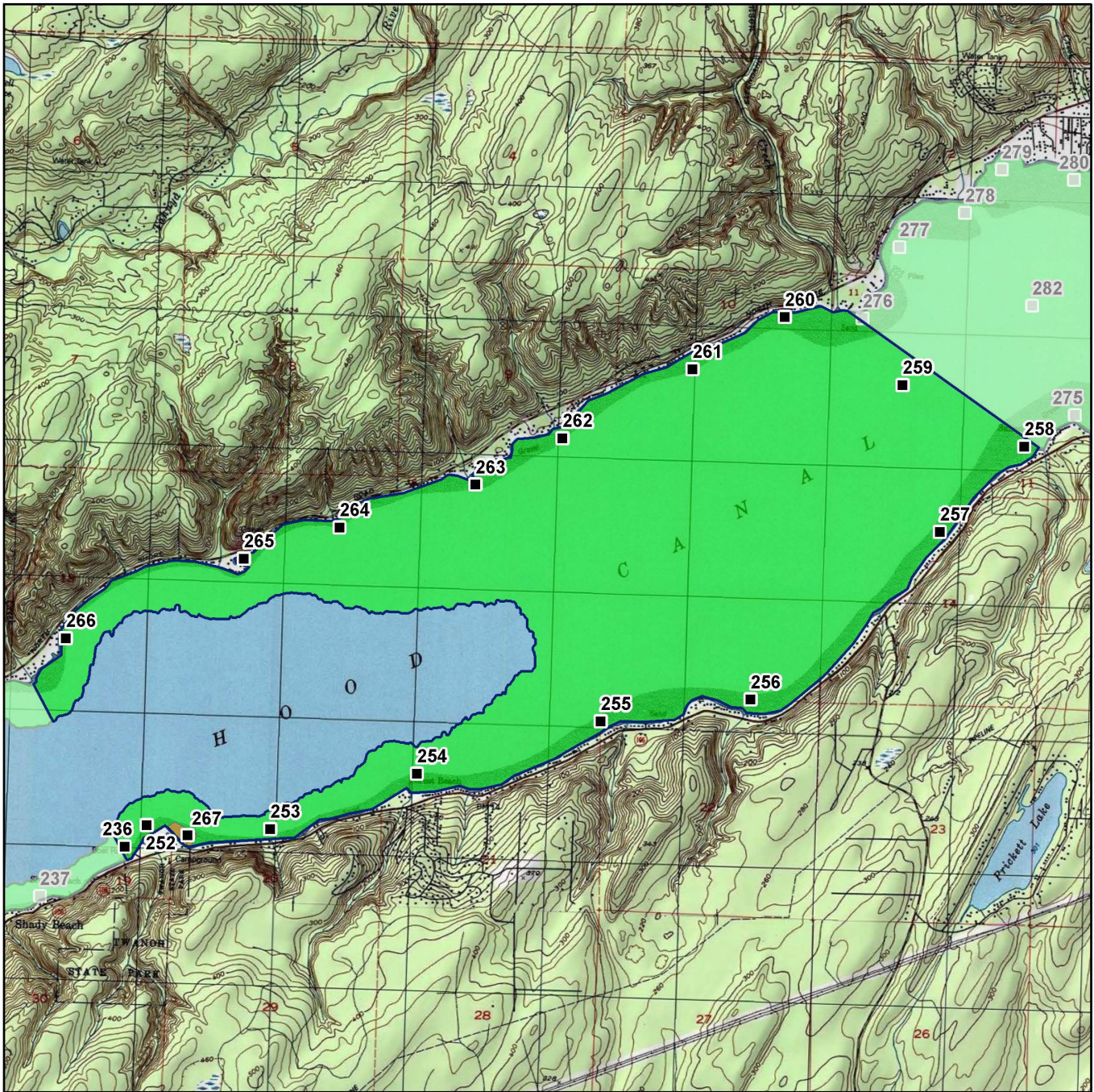
MAP 1. Hood Canal 8 Growing Area

 Hood Canal #8



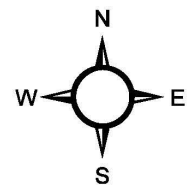
Date Updated: 7/11/2018

0 1 2 Miles



- Classification**
- Approved
 - Conditional
 - Prohibited
 - Restricted
 - Unclassified

Sampling Stations



* Some sampling stations are highlighted with grey box for ease of reading.