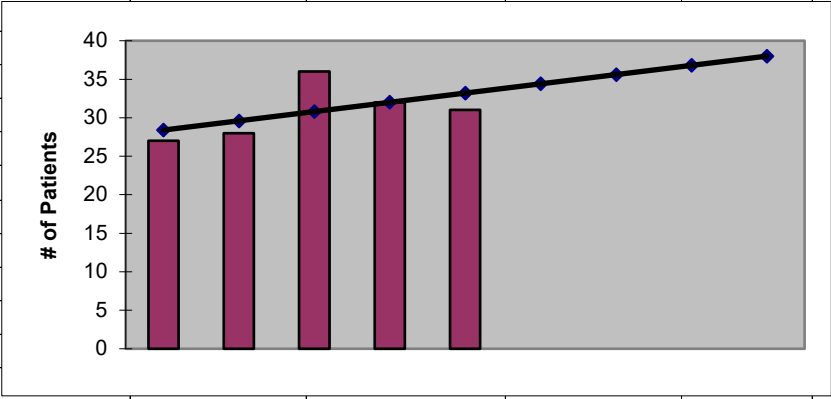


2024
Adams County
ESRD Need Projection Methodology

Planning Area		6 Year Utilization Data - Resident Incenter Patients					
Adams		2018	2019	2020	2021	2022	2023
Adams County		25	27	28	36	32	31
TOTALS		25	27	28	36	32	31
246-310-812(4)(a)	Rate of Change		8.00%	3.70%	28.57%	-11.11%	-3.13%
	6% Growth or Greater?		TRUE	FALSE	TRUE	FALSE	FALSE
	Regression Method:	Linear					
246-310-812(4)(c)			Year 1	Year 2	Year 3	Year 4	Year 5
			2024	2025	2026	2027	2028
Projected Resident Incenter Patients	from 246-310-812(4)(b)		34.40	35.60	36.80	38.00	39.20
Station Need for Patients	Divide Resident Incenter by 3.2		10.75	11.13	11.50	11.88	12.25
	Rounded to next whole number		11	12	12	12	13
246-310-812(4)(d)	subtract (4)(c) from approved stations						
Existing CN Approved Stations	Total		11	11	11	11	11
Results of (4)(c) above			11	12	12	12	13
Net Station Need			0	-1	-1	-1	-2
Negative number indicates need for stations							
Planning Area Facilities							
Name of Center	# of Stations						
FMC Leah Layne Dialysi	11						
Total	11						
Source: Northwest Renal Network / Comagine ESRD Network 16 data 2018-2023							
Most recent year-end data: 2023 posted 02/02/2024							

2024
Adams County
ESRD Need Projection Methodology

x	y	Linear						
2019	27	28						
2020	28	30						
2021	36	31						
2022	32	32						
2023	31	33						
2024		34.40						
2025		35.60						
2026		36.80						
2027		38.00						
2028		39.20						
SUMMARY OUTPUT								
<i>Regression Statistics</i>								
Multiple R	0.532413906							
R Square	0.283464567							
Adjusted R Square	0.044619423							
Standard Error	3.483293461							
Observations	5							
ANOVA								
	df	SS	MS	F	Significance F			
Regression	1	14.4	14.4	1.186813187	0.35565826			
Residual	3	36.4	12.13333333					
Total	4	50.8						
	Coefficients	Standard Error	t Stat	P-value	Lower 95%	Upper 95%	Lower 95.0%	Upper 95.0%
Intercept	-2394.4	2226.16056	-1.075573812	0.360917856	-9479.03645	4690.23645	-9479.04	4690.236
X Variable 1	1.2	1.101514109	1.089409559	0.35565826	-2.305509508	4.705509508	-2.30551	4.70551

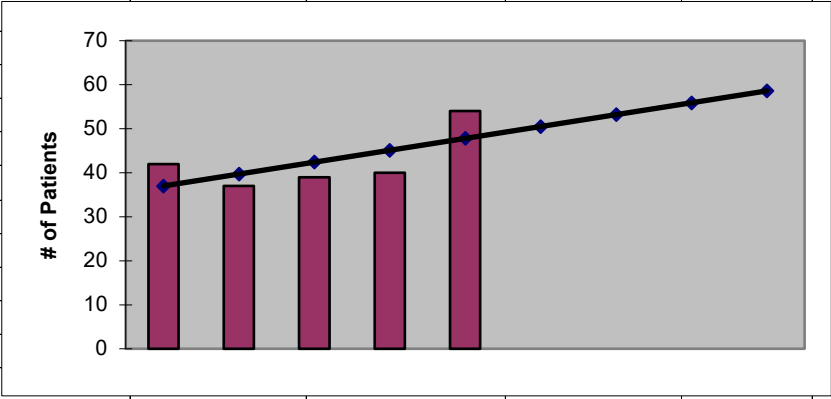


2024
Asotin County
ESRD Need Projection Methodology

Planning Area		6 Year Utilization Data - Resident Incenter Patients					
Asotin		2018	2019	2020	2021	2022	2023
Asotin County		31	14	16	18	20	19
Nez Perce, Idaho		63	28	21	21	20	35
TOTALS		94	42	37	39	40	54
246-310-812(4)(a)	Rate of Change		-55.32%	-11.90%	5.41%	2.56%	35.00%
	6% Growth or Greater?		FALSE	FALSE	FALSE	FALSE	TRUE
	Regression Method:	Linear					
246-310-812(4)(c)			Year 1	Year 2	Year 3	Year 4	Year 5
			2024	2025	2026	2027	2028
Projected Resident Incenter Patients	from 246-310-812(4)(b)		50.50	53.20	55.90	58.60	61.30
Station Need for Patients	Divide Resident Incenter by 4.8		10.52	11.08	11.65	12.21	12.77
	Rounded to next whole number		11	12	12	13	13
246-310-812(4)(d)	subtract (4)(c) from approved stations						
Existing CN Approved Stations	Total		13	13	13	13	13
Results of (4)(c) above			11	12	12	13	13
Net Station Need			2	1	1	0	0
Negative number indicates need for stations							
Planning Area Facilities							
Name of Center	# of Stations						
Tri-State Clarkston	13						
Total	13						
Source: Northwest Renal Network / Comagine ESRD Network 16 data 2018-2023							
Most recent year-end data: 2023 posted 02/02/2024							

2024
Asotin County
ESRD Need Projection Methodology

x	y	Linear							
2019	42	37							
2020	37	40							
2021	39	42							
2022	40	45							
2023	54	48							
2024		50.50							
2025		53.20							
2026		55.90							
2027		58.60							
2028		61.30							
SUMMARY OUTPUT									
<i>Regression Statistics</i>									
Multiple R	0.634285331								
R Square	0.402317881								
Adjusted R Square	0.203090508								
Standard Error	6.008327554								
Observations	5								
ANOVA									
	df	SS	MS	F	Significance F				
Regression	1	72.9	72.9	2.019390582	0.250412606				
Residual	3	108.3	36.1						
Total	4	181.2							
	Coefficients	Standard Error	t Stat	P-value	Lower 95%	Upper 95%	Lower 95.0%	Upper 95.0%	
Intercept	-5414.3	3839.90094	-1.410010332	0.253330479	-17634.57856	6805.97856	-17634.6	6805.979	
X Variable 1	2.7	1.9	1.421052632	0.250412606	-3.34664798	8.74664798	-3.34665	8.746648	

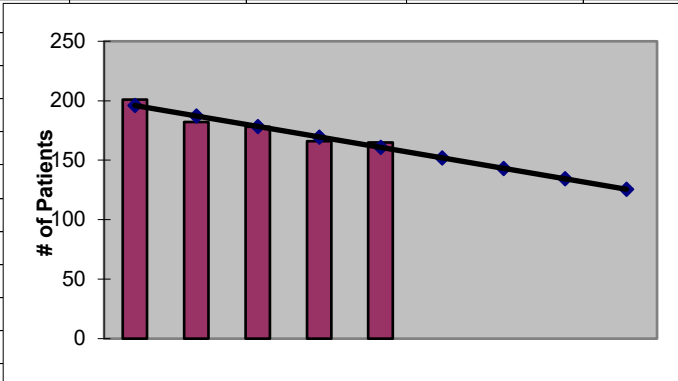


2024
Benton County
ESRD Need Projection Methodology

Planning Area		6 Year Utilization Data - Resident Incenter Patients					
Benton	2018	2019	2020	2021	2022	2023	
Benton County	189	201	182	178	166	165	
TOTALS	189	201	182	178	166	165	
246-310-812(4)(a)	Rate of Change		6.35%	-9.45%	-2.20%	-6.74%	-0.60%
	6% Growth or Greater?		TRUE	FALSE	FALSE	FALSE	FALSE
	Regression Method:	Linear					
246-310-812(4)(c)		Year 1	Year 2	Year 3	Year 4	Year 5	
		2024	2025	2026	2027	2028	
Projected Resident Incenter Patients	from 246-310-812(4)(b)	152.00	143.20	134.40	125.60	116.80	
Station Need for Patients	Divide Resident Incenter by 4.8	31.67	29.83	28.00	26.17	24.33	
	Rounded to next whole number	32	30	29	27	25	
246-310-812(4)(d)	subtract (4)(c) from approved stations						
Existing CN Approved Stations	Total	50	50	50	50	50	
Results of (4)(c) above		32	30	29	27	25	
Net Station Need		18	20	21	23	25	
Negative number indicates need for stations							
Planning Area Facilities							
Name of Center	# of Stations						
FMC Columbia Basin	17						
DaVita Kennewick	13						
DaVita Chinook	20						
Total	50						
Source: Northwest Renal Network / Comagine ESRD Network 16 data 2018-2023							
Most recent year-end data: 2023 posted 02/02/2024							

**2024
Benton County
ESRD Need Projection Methodology**

x	y	Linear						
2019	201	196						
2020	182	187						
2021	178	178						
2022	166	170						
2023	165	161						
2024		152.00						
2025		143.20						
2026		134.40						
2027		125.60						
2028		116.80						
SUMMARY OUTPUT								
<i>Regression Statistics</i>								
Multiple R	0.950476954							
R Square	0.90340644							
Adjusted R Square	0.871208586							
Standard Error	5.253570215							
Observations	5							
ANOVA								
	df	SS	MS	F	Significance F			
Regression	1	774.4	774.4	28.05797101	0.01313083			
Residual	3	82.8	27.6					
Total	4	857.2						
Coefficients								
	Coefficients	Standard Error	t Stat	P-value	Lower 95%	Upper 95%	Lower 95.0%	Upper 95.0%
Intercept	17963.2	3357.538187	5.35011	0.012772913	7278.015	28648.385	7278	28648.38
X Variable 1	-8.8	1.661324773	-5.29698	0.01313083	-14.087077	-3.51292312	-14.09	-3.51292

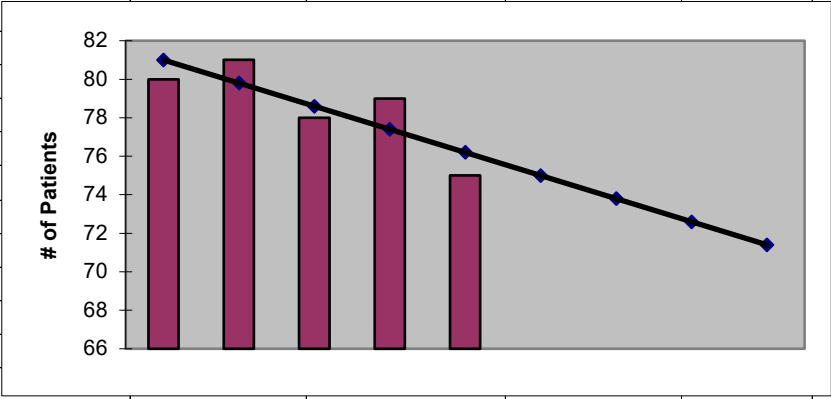


2024
Chelan County
ESRD Need Projection Methodology

Planning Area		6 Year Utilization Data - Resident Incenter Patients					
Chelan		2018	2019	2020	2021	2022	2023
Chelan County		77	80	81	78	79	75
TOTALS		77	80	81	78	79	75
246-310-812(4)(a)	Rate of Change		3.90%	1.25%	-3.70%	1.28%	-5.06%
	6% Growth or Greater?		FALSE	FALSE	FALSE	FALSE	FALSE
	Regression Method:	Linear					
246-310-812(4)(c)			Year 1	Year 2	Year 3	Year 4	Year 5
			2024	2025	2026	2027	2028
Projected Resident Incenter Patients	from 246-310-812(4)(b)		75.00	73.80	72.60	71.40	70.20
Station Need for Patients	Divide Resident Incenter by 4.8		15.63	15.37	15.13	14.87	14.63
	Rounded to next whole number		16	16	16	15	15
246-310-812(4)(d)	subtract (4)(c) from approved stations						
Existing CN Approved Stations	Total		22	22	22	22	22
Results of (4)(c) above			16	16	16	15	15
Net Station Need			6	6	6	7	7
Negative number indicates need for stations							
Planning Area Facilities							
Name of Center	# of Stations						
Wenatchee Valley Dialys	22						
Total	22						
Source: Northwest Renal Network / Comagine ESRD Network 16 data 2018-2023							
Most recent year-end data: 2023 posted 02/02/2024							

2024
Chelan County
ESRD Need Projection Methodology

x	y	Linear							
2019	80	81							
2020	81	80							
2021	78	79							
2022	79	77							
2023	75	76							
2024		75.00							
2025		73.80							
2026		72.60							
2027		71.40							
2028		70.20							
SUMMARY OUTPUT									
<i>Regression Statistics</i>									
Multiple R	0.824163384								
R Square	0.679245283								
Adjusted R Square	0.572327044								
Standard Error	1.505545305								
Observations	5								
ANOVA									
	df	SS	MS	F	Significance F				
Regression	1	14.4	14.4	6.352941176	0.086138631				
Residual	3	6.8	2.266666667						
Total	4	21.2							
	Coefficients	Standard Error	t Stat	P-value	Lower 95%	Upper 95%	Lower 95.0%	Upper 95.0%	
Intercept	2503.8	962.1886925	2.602192293	0.080223739	-558.3138495	5565.913849	-558.314	5565.914	
X Variable 1	-1.2	0.476095229	-2.520504151	0.086138631	-2.715147501	0.315147501	-2.71515	0.315148	

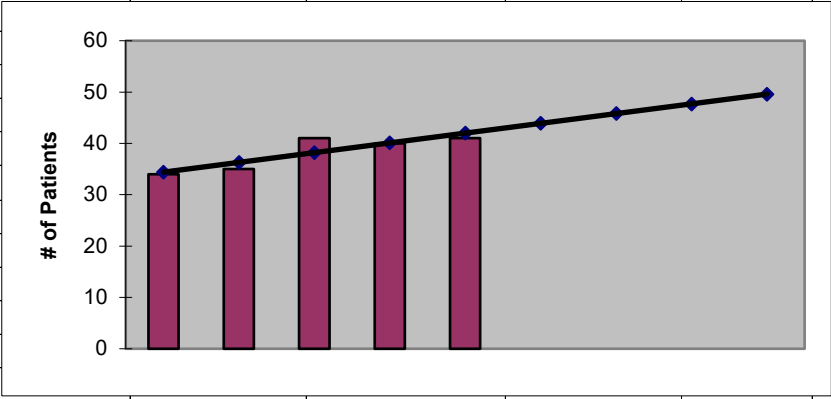


2024
Clallam County
ESRD Need Projection Methodology

Planning Area		6 Year Utilization Data - Resident Incenter Patients					
Clallam		2018	2019	2020	2021	2022	2023
Clallam County		42	34	35	41	40	41
TOTALS		42	34	35	41	40	41
246-310-812(4)(a)	Rate of Change		-19.05%	2.94%	17.14%	-2.44%	2.50%
	6% Growth or Greater?		FALSE	FALSE	TRUE	FALSE	FALSE
	Regression Method:	Linear					
246-310-812(4)(c)			Year 1	Year 2	Year 3	Year 4	Year 5
			2024	2025	2026	2027	2028
Projected Resident Incenter Patients	from 246-310-812(4)(b)		43.90	45.80	47.70	49.60	51.50
Station Need for Patients	Divide Resident Incenter by 4.8		9.15	9.54	9.94	10.33	10.73
	Rounded to next whole number		10	10	10	11	11
246-310-812(4)(d)	subtract (4)(c) from approved stations						
Existing CN Approved Stations	Total		10	10	10	10	10
Results of (4)(c) above			10	10	10	11	11
Net Station Need			0	0	0	-1	-1
Negative number indicates need for stations							
Planning Area Facilities							
Name of Center	# of Stations						
NKC Port Angeles	10						
Total	10						
Source: Northwest Renal Network / Comagine ESRD Network 16 data 2018-2023							
Most recent year-end data: 2023 posted 02/02/2024							

2024
Clallam County
ESRD Need Projection Methodology

x	y	Linear							
2019	34	34							
2020	35	36							
2021	41	38							
2022	40	40							
2023	41	42							
2024		43.90							
2025		45.80							
2026		47.70							
2027		49.60							
2028		51.50							
SUMMARY OUTPUT									
<i>Regression Statistics</i>									
Multiple R	0.878275311								
R Square	0.771367521								
Adjusted R Square	0.695156695								
Standard Error	1.888562063								
Observations	5								
ANOVA									
	<i>df</i>	<i>SS</i>	<i>MS</i>	<i>F</i>	<i>Significance F</i>				
Regression	1	36.1	36.1	10.12149533	0.050039042				
Residual	3	10.7	3.566666667						
Total	4	46.8							
	<i>Coefficients</i>	<i>Standard Error</i>	<i>t Stat</i>	<i>P-value</i>	<i>Lower 95%</i>	<i>Upper 95%</i>	<i>Lower 95.0%</i>	<i>Upper 95.0%</i>	
Intercept	-3801.7	1206.973351	-3.149779568	0.051274126	-7642.827881	39.42788143	-7642.83	39.42788	
X Variable 1	1.9	0.597215762	3.181429761	0.050039042	-0.000607096	3.800607096	-0.00061	3.800607	

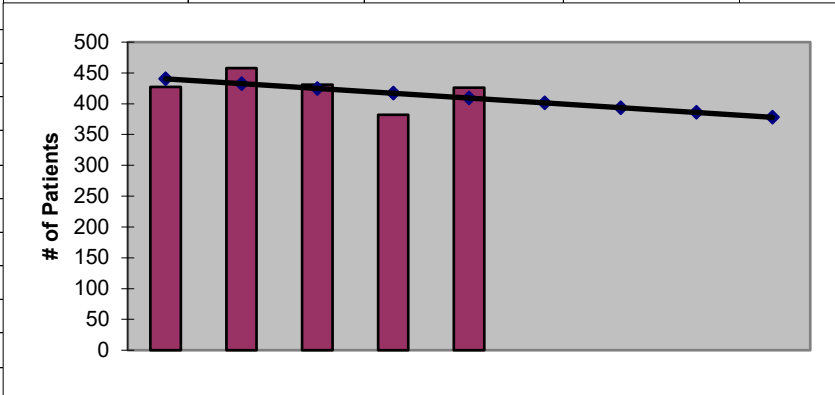


2024
Clark County
ESRD Need Projection Methodology

Planning Area		6 Year Utilization Data - Resident Incenter Patients					
Clark	2018	2019	2020	2021	2022	2023	
Clark County	432	427	458	431	382	426	
TOTALS	432	427	458	431	382	426	
246-310-812(4)(a)	Rate of Change		-1.16%	7.26%	-5.90%	-11.37%	11.52%
	6% Growth or Greater?		FALSE	TRUE	FALSE	FALSE	TRUE
	Regression Method:	Linear					
246-310-812(4)(c)		Year 1	Year 2	Year 3	Year 4	Year 5	
		2024	2025	2026	2027	2028	
Projected Resident Incenter Patients	from 246-310-812(4)(b)	401.40	393.60	385.80	378.00	370.20	
Station Need for Patients	Divide Resident Incenter by 4.8	83.62	82.00	80.37	78.75	77.12	
	Rounded to next whole number	84	82	81	79	78	
246-310-812(4)(d)	subtract (4)(c) from approved stations						
Existing CN Approved Stations	Total	116	116	116	116	116	
Results of (4)(c) above		84	82	81	79	78	
Net Station Need		32	34	35	37	38	
Negative number indicates need for stations							
Planning Area Facilities							
Name of Center	# of Stations						
DaVita Vancouver	14						
FMC Camas	10						
FMC Ft. Vancouver	24						
FMC Salmon Creek	16						
DaVita Battle Ground	12						
PSKC Vancouver	18						
PNRS Battle Ground	22						
Total	116						
Source: Northwest Renal Network / Comagine ESRD Network 16 data 2018-2023							
Most recent year-end data: 2023 posted 02/02/2024							

2024
Clark County
ESRD Need Projection Methodology

x	y	Linear							
2019	427	440							
2020	458	433							
2021	431	425							
2022	382	417							
2023	426	409							
2024		401.40							
2025		393.60							
2026		385.80							
2027		378.00							
2028		370.20							
SUMMARY OUTPUT									
<i>Regression Statistics</i>									
Multiple R	0.451932871								
R Square	0.204243319								
Adjusted R Square	-0.061008907								
Standard Error	28.10931044								
Observations	5								
ANOVA									
	<i>df</i>	<i>SS</i>	<i>MS</i>	<i>F</i>	<i>Significance F</i>				
Regression	1	608.4	608.4	0.769996625	0.444817571				
Residual	3	2370.4	790.1333333						
Total	4	2978.8							
	<i>Coefficients</i>	<i>Standard Error</i>	<i>t Stat</i>	<i>P-value</i>	<i>Lower 95%</i>	<i>Upper 95%</i>	<i>Lower 95.0%</i>	<i>Upper 95.0%</i>	
Intercept	16188.6	17964.56112	0.901140857	0.433931349	-40982.65116	73359.85116	-40982.7	73359.85	
X Variable 1	-7.8	8.888944444	-0.877494516	0.444817571	-36.0885884	20.4885884	-36.0886	20.48859	

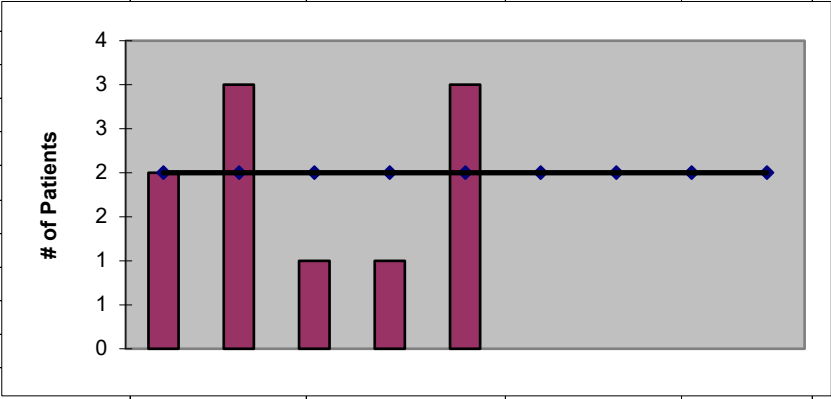


2024
Columbia County
ESRD Need Projection Methodology

Planning Area		6 Year Utilization Data - Resident Incenter Patients					
Columbia	2018	2019	2020	2021	2022	2023	
Columbia County	2	2	3	1	1	3	
TOTALS	2	2	3	1	1	3	
246-310-812(4)(a)	Rate of Change		0.00%	50.00%	-66.67%	0.00%	200.00%
	6% Growth or Greater?		FALSE	TRUE	FALSE	FALSE	TRUE
	Regression Method:	Linear					
	Linear used						
246-310-812(4)(c)		Year 1	Year 2	Year 3	Year 4	Year 5	
		2024	2025	2026	2027	2028	
Projected Resident Incenter Patients	from 246-310-812(4)(b)	2.00	2.00	2.00	2.00	2.00	
Station Need for Patients	Divide Resident Incenter by 3.2	0.63	0.63	0.63	0.63	0.63	
	Rounded to next whole number	1	1	1	1	1	
246-310-812(4)(d)	subtract (4)(c) from approved stations						
Existing CN Approved Stations	Total	0	0	0	0	0	
Results of (4)(c) above		1	1	1	1	1	
Net Station Need		-1	-1	-1	-1	-1	
Negative number indicates need for stations							
Planning Area Facilities							
Name of Center	# of Stations						
None	0						
Total	0						
Source: Northwest Renal Network / Comagine ESRD Network 16 data 2018-2023							
Most recent year-end data: 2023 posted 02/02/2024							

2024
Columbia County
ESRD Need Projection Methodology

x	y	Linear							
2019	2	2							
2020	3	2							
2021	1	2							
2022	1	2							
2023	3	2							
2024		2.00							
2025		2.00							
2026		2.00							
2027		2.00							
2028		2.00							
SUMMARY OUTPUT									
<i>Regression Statistics</i>									
Multiple R	1.05367E-08								
R Square	1.11022E-16								
Adjusted R Square	-0.333333333								
Standard Error	1.154700538								
Observations	5								
ANOVA									
	df	SS	MS	F	Significance F				
Regression	1	4.44089E-16	4.44089E-16	3.33067E-16	0.999999987				
Residual	3	4	1.333333333						
Total	4	4							
	Coefficients	Standard Error	t Stat	P-value	Lower 95%	Upper 95%	Lower 95.0%	Upper 95.0%	
Intercept	2	737.9650398	0.002710155	0.998007754	-2346.534114	2350.534114	-2346.53	2350.534	
X Variable 1	-7.02167E-17	0.365148372	-1.92296E-16	1	-1.162065086	1.162065086	-1.16207	1.162065	

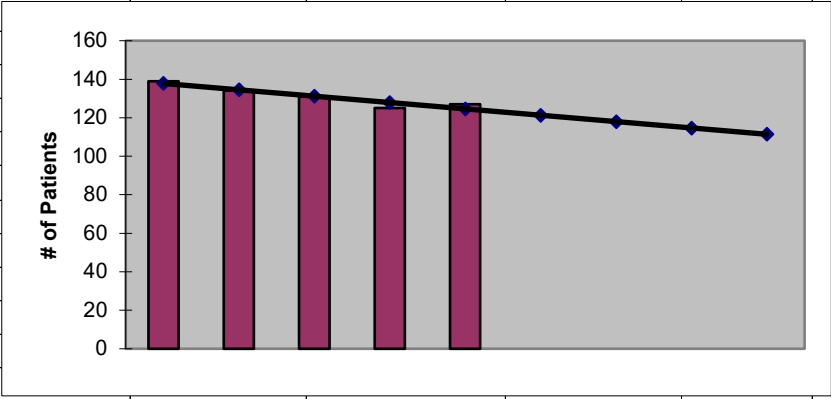


2024
Cowlitz County
ESRD Need Projection Methodology

Planning Area		6 Year Utilization Data - Resident Incenter Patients					
Cowlitz	2018	2019	2020	2021	2022	2023	
Cowlitz County	126	139	134	131	125	127	
TOTALS	126	139	134	131	125	127	
246-310-812(4)(a)	Rate of Change		10.32%	-3.60%	-2.24%	-4.58%	1.60%
	6% Growth or Greater?		TRUE	FALSE	FALSE	FALSE	FALSE
	Regression Method:	Linear					
246-310-812(4)(c)		Year 1	Year 2	Year 3	Year 4	Year 5	
		2024	2025	2026	2027	2028	
Projected Resident Incenter Patients	from 246-310-812(4)(b)	121.30	118.00	114.70	111.40	108.10	
Station Need for Patients	Divide Resident Incenter by 4.8	25.27	24.58	23.90	23.21	22.52	
	Rounded to next whole number	26	25	24	24	23	
246-310-812(4)(d)	subtract (4)(c) from approved stations						
Existing CN Approved Stations	Total	39	39	39	39	39	
Results of (4)(c) above		26	25	24	24	23	
Net Station Need		13	14	15	15	16	
Negative number indicates need for stations							
Planning Area Facilities							
Name of Center	# of Stations						
DaVita Woodland	11						
FMC Cowlitz	24						
FKC Longview	4						
Total	39						
Source: Northwest Renal Network / Comagine ESRD Network 16 data 2018-2023							
Most recent year-end data: 2023 posted 02/02/2024							

2024
Cowlitz County
ESRD Need Projection Methodology

x	y	Linear							
2019	139	138							
2020	134	134							
2021	131	131							
2022	125	128							
2023	127	125							
2024		121.30							
2025		118.00							
2026		114.70							
2027		111.40							
2028		108.10							
SUMMARY OUTPUT									
<i>Regression Statistics</i>									
Multiple R	0.934128553								
R Square	0.872596154								
Adjusted R Square	0.830128205								
Standard Error	2.302172887								
Observations	5								
ANOVA									
	df	SS	MS	F	Significance F				
Regression	1	108.9	108.9	20.54716981	0.020092841				
Residual	3	15.9	5.3						
Total	4	124.8							
	Coefficients	Standard Error	t Stat	P-value	Lower 95%	Upper 95%	Lower 95.0%	Upper 95.0%	
Intercept	6800.5	1471.310569	4.6220697	0.019064387	2118.133116	11482.86688	2118.133	11482.87	
X Variable 1	-3.3	0.728010989	-4.53289861	0.020092841	-5.616855882	-0.98314412	-5.61686	-0.98314	

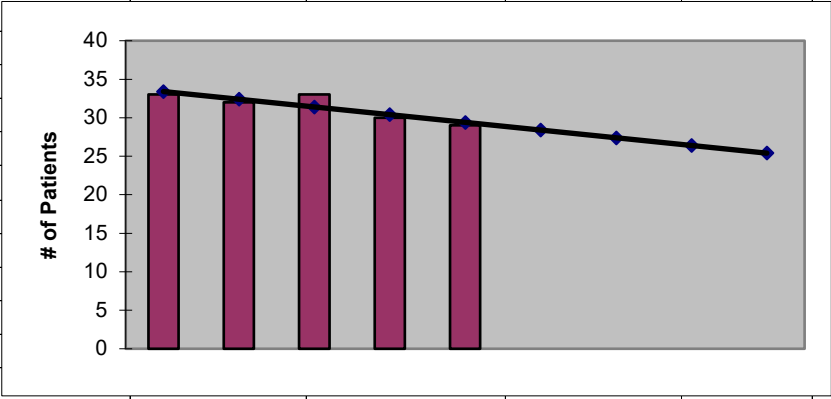


2024
Douglas County
ESRD Need Projection Methodology

Planning Area		6 Year Utilization Data - Resident Incenter Patients					
Douglas	2018	2019	2020	2021	2022	2023	
Douglas County	33	33	32	33	30	29	
TOTALS	33	33	32	33	30	29	
246-310-812(4)(a)	Rate of Change		0.00%	-3.03%	3.13%	-9.09%	-3.33%
	6% Growth or Greater?		FALSE	FALSE	FALSE	FALSE	FALSE
	Regression Method:	Linear					
246-310-812(4)(c)		Year 1	Year 2	Year 3	Year 4	Year 5	
		2024	2025	2026	2027	2028	
Projected Resident Incenter Patients	from 246-310-812(4)(b)	28.40	27.40	26.40	25.40	24.40	
Station Need for Patients	Divide Resident Incenter by 3.2	8.88	8.56	8.25	7.94	7.63	
	Rounded to next whole number	9	9	9	8	8	
246-310-812(4)(d)	subtract (4)(c) from approved stations						
Existing CN Approved Stations	Total	13	13	13	13	13	
Results of (4)(c) above		9	9	9	8	8	
Net Station Need		4	4	4	5	5	
Negative number indicates need for stations							
Planning Area Facilities							
Name of Center	# of Stations						
DaVita East Wenatchee	13						
Total	13						
Source: Northwest Renal Network / Comagine ESRD Network 16 data 2018-2023							
Most recent year-end data: 2023 posted 02/02/2024							

2024
Douglas County
ESRD Need Projection Methodology

x	y	Linear							
2019	33	33							
2020	32	32							
2021	33	31							
2022	30	30							
2023	29	29							
2024		28.40							
2025		27.40							
2026		26.40							
2027		25.40							
2028		24.40							
SUMMARY OUTPUT									
<i>Regression Statistics</i>									
Multiple R	0.87038828								
R Square	0.757575758								
Adjusted R Square	0.676767677								
Standard Error	1.032795559								
Observations	5								
ANOVA									
	df	SS	MS	F	Significance F				
Regression	1	10	10	9.375	0.054912524				
Residual	3	3.2	1.066666667						
Total	4	13.2							
	Coefficients	Standard Error	t Stat	P-value	Lower 95%	Upper 95%	Lower 95.0%	Upper 95.0%	
Intercept	2052.4	660.0559976	3.10943315	0.052904877	-48.19277092	4152.992771	-48.1928	4152.993	
X Variable 1	-1	0.326598632	-3.061862178	0.054912524	-2.039382611	0.039382611	-2.03938	0.039383	

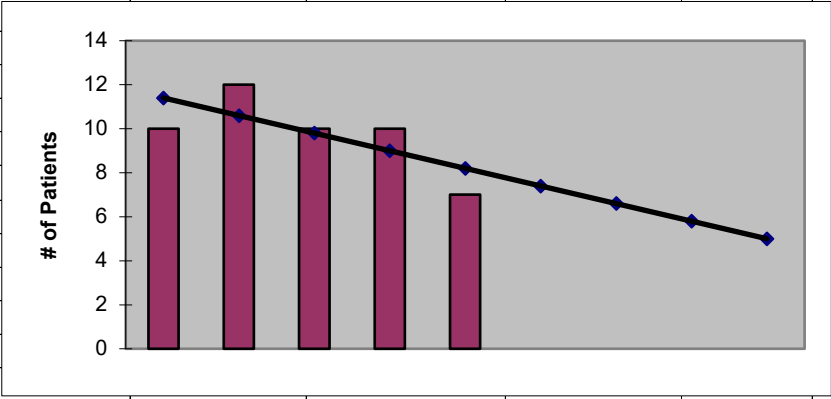


2024
Ferry County
ESRD Need Projection Methodology

Planning Area		6 Year Utilization Data - Resident Incenter Patients					
Ferry	2018	2019	2020	2021	2022	2023	
Ferry County	14	10	12	10	10	7	
TOTALS	14	10	12	10	10	7	
246-310-812(4)(a)	Rate of Change		-28.57%	20.00%	-16.67%	0.00%	-30.00%
	6% Growth or Greater?		FALSE	TRUE	FALSE	FALSE	FALSE
	Regression Method:	Linear					
246-310-812(4)(c)		Year 1	Year 2	Year 3	Year 4	Year 5	
		2024	2025	2026	2027	2028	
Projected Resident Incenter Patients	from 246-310-812(4)(b)	7.40	6.60	5.80	5.00	4.20	
Station Need for Patients	Divide Resident Incenter by 3.2	2.31	2.06	1.81	1.56	1.31	
	Rounded to next whole number	3	3	2	2	2	
246-310-812(4)(d)	subtract (4)(c) from approved stations						
Existing CN Approved Stations	Total	0	0	0	0	0	
Results of (4)(c) above		3	3	2	2	2	
Net Station Need		-3	-3	-2	-2	-2	
Negative number indicates need for stations							
Planning Area Facilities							
Name of Center	# of Stations						
None	0						
Total	0						
Source: Northwest Renal Network / Comagine ESRD Network 16 data 2018-2023							
Most recent year-end data: 2023 posted 02/08/2024							

2024
Ferry County
ESRD Need Projection Methodology

x	y	Linear							
2019	10	11							
2020	12	11							
2021	10	10							
2022	10	9							
2023	7	8							
2024		7.40							
2025		6.60							
2026		5.80							
2027		5.00							
2028		4.20							
SUMMARY OUTPUT									
<i>Regression Statistics</i>									
Multiple R	0.707106781								
R Square	0.5								
Adjusted R Square	0.333333333								
Standard Error	1.460593487								
Observations	5								
ANOVA									
	df	SS	MS	F	Significance F				
Regression	1	6.4	6.4	3	0.181690114				
Residual	3	6.4	2.133333333						
Total	4	12.8							
	Coefficients	Standard Error	t Stat	P-value	Lower 95%	Upper 95%	Lower 95.0%	Upper 95.0%	
Intercept	1626.6	933.4601438	1.742548957	0.179772449	-1344.086786	4597.286786	-1344.09	4597.287	
X Variable 1	-0.8	0.461880215	-1.732050808	0.181690114	-2.269908985	0.669908985	-2.26991	0.669909	

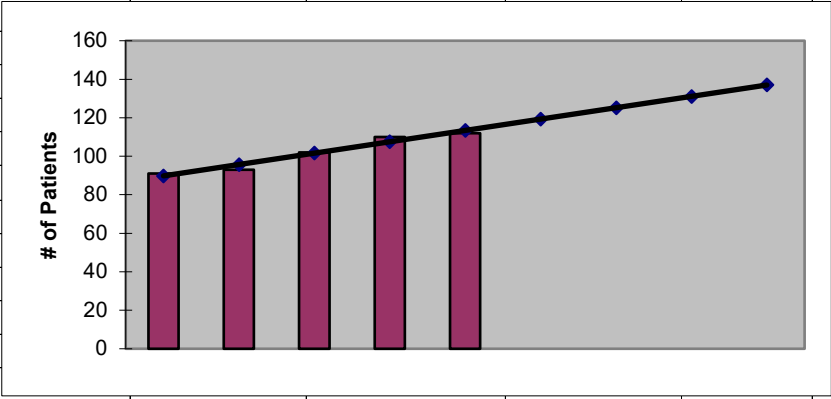


2024
Franklin County
ESRD Need Projection Methodology

Planning Area		6 Year Utilization Data - Resident Incenter Patients					
Franklin	2018	2019	2020	2021	2022	2023	
Franklin County	84	91	93	102	110	112	
TOTALS	84	91	93	102	110	112	
246-310-812(4)(a)	Rate of Change		8.33%	2.20%	9.68%	7.84%	1.82%
	6% Growth or Greater?		TRUE	FALSE	TRUE	TRUE	FALSE
	Regression Method:	Linear					
246-310-812(4)(c)		Year 1	Year 2	Year 3	Year 4	Year 5	
		2024	2025	2026	2027	2028	
Projected Resident Incenter Patients	from 246-310-812(4)(b)	119.30	125.20	131.10	137.00	142.90	
Station Need for Patients	Divide Resident Incenter by 4.8	24.85	26.08	27.31	28.54	29.77	
	Rounded to next whole number	25	27	28	29	30	
246-310-812(4)(d)	subtract (4)(c) from approved stations						
Existing CN Approved Stations	Total	30	30	30	30	30	
Results of (4)(c) above		25	27	28	29	30	
Net Station Need		5	3	2	1	0	
Negative number indicates need for stations							
Planning Area Facilities							
Name of Center	# of Stations						
DaVita Mid-Columbia	30						
Total	30						
Source: Northwest Renal Network / Comagine ESRD Network 16 data 2018-2023							
Most recent year-end data: 2023 posted 02/02/2024							

2024
Franklin County
ESRD Need Projection Methodology

x	y	Linear							
2019	91	90							
2020	93	96							
2021	102	102							
2022	110	108							
2023	112	113							
2024		119.30							
2025		125.20							
2026		131.10							
2027		137.00							
2028		142.90							
SUMMARY OUTPUT									
<i>Regression Statistics</i>									
Multiple R	0.976307504								
R Square	0.953176342								
Adjusted R Square	0.937568456								
Standard Error	2.387467277								
Observations	5								
ANOVA									
	df	SS	MS	F	Significance F				
Regression	1	348.1	348.1	61.07017544	0.00436215				
Residual	3	17.1	5.7						
Total	4	365.2							
	Coefficients	Standard Error	t Stat	P-value	Lower 95%	Upper 95%	Lower 95.0%	Upper 95.0%	
Intercept	-11822.3	1525.821913	-7.74815193	0.004471238	-16678.14631	-6966.45369	-16678.1	-6966.45	
X Variable 1	5.9	0.754983444	7.814740907	0.00436215	3.49730573	8.30269427	3.497306	8.302694	

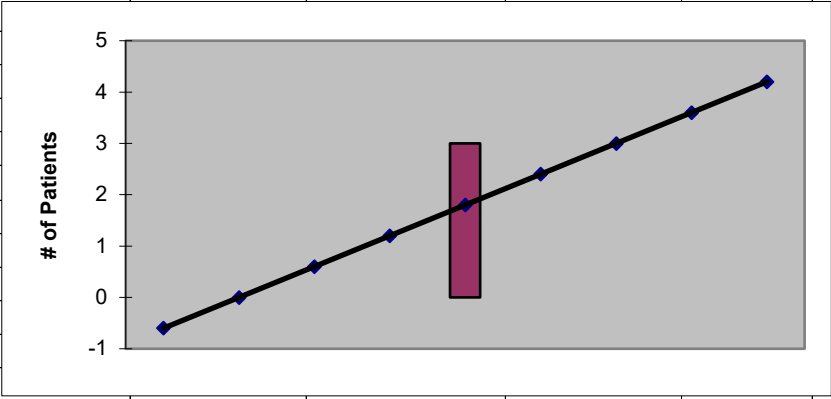


2024
Garfield County
ESRD Need Projection Methodology

Planning Area		6 Year Utilization Data - Resident Incenter Patients					
Garfield		2018	2019	2020	2021	2022	2023
Garfield County		0	0	0	0	0	3
TOTALS		0	0	0	0	0	3
246-310-812(4)(a)	Rate of Change		#DIV/0!	#DIV/0!	#DIV/0!	#DIV/0!	#DIV/0!
	6% Growth or Greater?		#DIV/0!	#DIV/0!	#DIV/0!	#DIV/0!	#DIV/0!
	Regression Method:	#DIV/0!					
	Linear used						
246-310-812(4)(c)			Year 1	Year 2	Year 3	Year 4	Year 5
			2024	2025	2026	2027	2028
Projected Resident Incenter Patients	from 246-310-812(4)(b)		2.40	3.00	3.60	4.20	4.80
Station Need for Patients	Divide Resident Incenter by 3.2		0.75	0.94	1.12	1.31	1.50
	Rounded to next whole number		1	1	2	2	2
246-310-812(4)(d)	subtract (4)(c) from approved stations						
Existing CN Approved Stations	Total		0	0	0	0	0
Results of (4)(c) above			1	1	2	2	2
Net Station Need			-1	-1	-2	-2	-2
Negative number indicates need for stations							
Planning Area Facilities							
Name of Center	# of Stations						
None	0						
Total	0						
Source: Northwest Renal Network / Comagine ESRD Network 16 data 2018-2023							
Most recent year-end data: 2023 posted 02/02/2024							

2024
Garfield County
ESRD Need Projection Methodology

x	y	Linear							
2019	0	-1							
2020	0	0							
2021	0	1							
2022	0	1							
2023	3	2							
2024		2.40							
2025		3.00							
2026		3.60							
2027		4.20							
2028		4.80							
SUMMARY OUTPUT									
<i>Regression Statistics</i>									
Multiple R	0.707106781								
R Square	0.5								
Adjusted R Square	0.333333333								
Standard Error	1.095445115								
Observations	5								
ANOVA									
	df	SS	MS	F	Significance F				
Regression	1	3.6	3.6	3	0.181690114				
Residual	3	3.6	1.2						
Total	4	7.2							
	Coefficients	Standard Error	t Stat	P-value	Lower 95%	Upper 95%	Lower 95.0%	Upper 95.0%	
Intercept	-1212	700.0951078	-1.731193357	0.181847771	-3440.015089	1016.015089	-3440.02	1016.015	
X Variable 1	0.6	0.346410162	1.732050808	0.181690114	-0.502431739	1.702431739	-0.50243	1.702432	

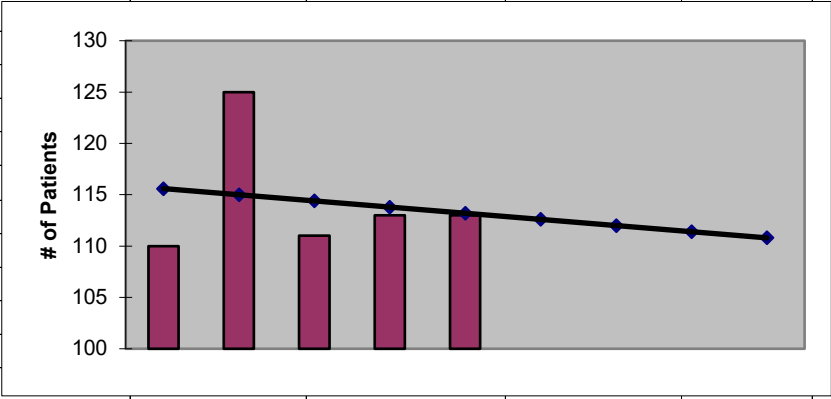


2024
Grant County
ESRD Need Projection Methodology

Planning Area		6 Year Utilization Data - Resident Incenter Patients					
Grant	2018	2019	2020	2021	2022	2023	
Grant County	114	110	125	111	113	113	
TOTALS	114	110	125	111	113	113	
246-310-812(4)(a)	Rate of Change		-3.51%	13.64%	-11.20%	1.80%	0.00%
	6% Growth or Greater?		FALSE	TRUE	FALSE	FALSE	FALSE
	Regression Method:	Linear					
246-310-812(4)(c)		Year 1	Year 2	Year 3	Year 4	Year 5	
		2024	2025	2026	2027	2028	
Projected Resident Incenter Patients	from 246-310-812(4)(b)	112.60	112.00	111.40	110.80	110.20	
Station Need for Patients	Divide Resident Incenter by 4.8	23.46	23.33	23.21	23.08	22.96	
	Rounded to next whole number	24	24	24	24	23	
246-310-812(4)(d)	subtract (4)(c) from approved stations						
Existing CN Approved Stations	Total	32	32	32	32	32	
Results of (4)(c) above		24	24	24	24	23	
Net Station Need		8	8	8	8	9	
Negative number indicates need for stations							
Planning Area Facilities							
Name of Center	# of Stations						
FMC Moses Lake	26						
DaVita Quincy	6						
Total	32						
Source: Northwest Renal Network / Comagine ESRD Network 16 data 2018-2023							
Most recent year-end data: 2023 posted 02/02/2024							

2024
Grant County
ESRD Need Projection Methodology

x	y	Linear							
2019	110	116							
2020	125	115							
2021	111	114							
2022	113	114							
2023	113	113							
2024		112.60							
2025		112.00							
2026		111.40							
2027		110.80							
2028		110.20							
SUMMARY OUTPUT									
<i>Regression Statistics</i>									
Multiple R	0.156385811								
R Square	0.024456522								
Adjusted R Square	-0.300724638								
Standard Error	6.918574034								
Observations	5								
ANOVA									
	df	SS	MS	F	Significance F				
Regression	1	3.6	3.6	0.075208914	0.801698022				
Residual	3	143.6	47.86666667						
Total	4	147.2							
	Coefficients	Standard Error	t Stat	P-value	Lower 95%	Upper 95%	Lower 95.0%	Upper 95.0%	
Intercept	1327	4421.636254	0.300115144	0.78368351	-12744.61996	15398.61996	-12744.6	15398.62	
X Variable 1	-0.6	2.187845211	-0.274242436	0.801698022	-7.562699908	6.362699908	-7.5627	6.3627	

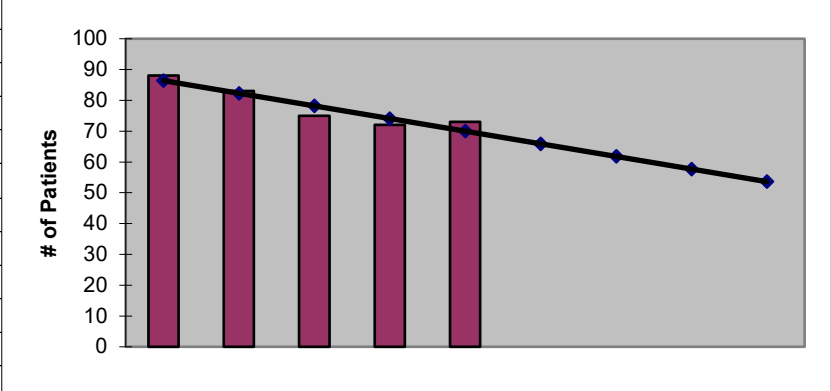


2024
Grays Harbor County
ESRD Need Projection Methodology

Planning Area		6 Year Utilization Data - Resident Incenter Patients					
Grays Harbor		2018	2019	2020	2021	2022	2023
Grays Harbor County		79	88	83	75	72	73
TOTALS		79	88	83	75	72	73
246-310-812(4)(a)	Rate of Change		11.39%	-5.68%	-9.64%	-4.00%	1.39%
	6% Growth or Greater?		TRUE	FALSE	FALSE	FALSE	FALSE
	Regression Method:	Linear					
246-310-812(4)(c)			Year 1	Year 2	Year 3	Year 4	Year 5
			2024	2025	2026	2027	2028
Projected Resident Incenter Patients	from 246-310-812(4)(b)		65.90	61.80	57.70	53.60	49.50
Station Need for Patients	Divide Resident Incenter by 4.8		13.73	12.87	12.02	11.17	10.31
	Rounded to next whole number		14	13	13	12	11
246-310-812(4)(d)	subtract (4)(c) from approved stations						
Existing CN Approved Stations	Total		19	19	19	19	19
Results of (4)(c) above			14	13	13	12	11
Net Station Need			5	6	6	7	8
Negative number indicates need for stations							
Planning Area Facilities							
Name of Center	# of Stations						
FKC Aberdeen	19						
Total	19						
Source: Northwest Renal Network / Comagine ESRD Network 16 data 2018-2023							
Most recent year-end data: 2023 posted 02/02/2024							

2024
Grays Harbor County
ESRD Need Projection Methodology

x	y	Linear							
2019	88	86							
2020	83	82							
2021	75	78							
2022	72	74							
2023	73	70							
2024		65.90							
2025		61.80							
2026		57.70							
2027		53.60							
2028		49.50							
SUMMARY OUTPUT									
<i>Regression Statistics</i>									
Multiple R	0.928943672								
R Square	0.862936345								
Adjusted R Square	0.81724846								
Standard Error	2.983286778								
Observations	5								
ANOVA									
	df	SS	MS	F	Significance F				
Regression	1	168.1	168.1	18.88764045	0.02249335				
Residual	3	26.7	8.9						
Total	4	194.8							
	Coefficients	Standard Error	t Stat	P-value	Lower 95%	Upper 95%	Lower 95.0%	Upper 95.0%	
Intercept	8364.3	1906.608054	4.387005491	0.021936049	2296.622244	14431.97776	2296.622	14431.98	
X Variable 1	-4.1	0.943398113	-4.345991308	0.02249335	-7.10231384	-1.09768616	-7.10231	-1.09769	

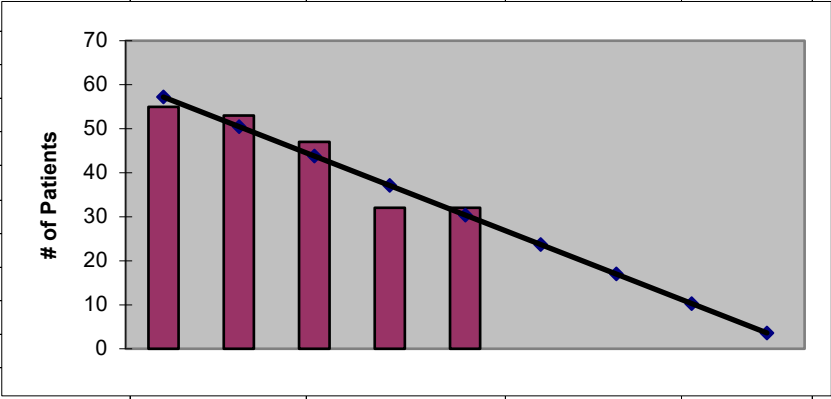


2024
Island County
ESRD Need Projection Methodology

Planning Area		6 Year Utilization Data - Resident Incenter Patients					
Island	2018	2019	2020	2021	2022	2023	
Island County	60	63	58	51	37	37	
Less 98282 to Sno #1	-8	-8	-5	-4	-5	-5	
TOTALS	52	55	53	47	32	32	
246-310-812(4)(a)	Rate of Change		5.77%	-3.64%	-11.32%	-31.91%	0.00%
	6% Growth or Greater?		FALSE	FALSE	FALSE	FALSE	FALSE
	Regression Method:	Linear					
246-310-812(4)(c)		Year 1	Year 2	Year 3	Year 4	Year 5	
		2024	2025	2026	2027	2028	
Projected Resident Incenter Patients	from 246-310-812(4)(b)	23.70	17.00	10.30	3.60	-3.10	
Station Need for Patients	Divide Resident Incenter by 4.8	4.94	3.54	2.15	0.75	-0.65	
	Rounded to next whole number	5	4	3	1	-1	
246-310-812(4)(d)	subtract (4)(c) from approved stations						
Existing CN Approved Stations	Total	9	9	9	9	9	
Results of (4)(c) above		5	4	3	1	-1	
Net Station Need		4	5	6	8	10	
Negative number indicates need for stations							
Planning Area Facilities							
Name of Center	# of Stations						
PSKC Whidbey Island	9						
Total	9						
Source: Northwest Renal Network / Comagine ESRD Network 16 data 2018-2023							
Most recent year-end data: 2023 posted 02/02/2024							

**2024
Island County
ESRD Need Projection Methodology**

x	y	Linear							
2019	55	57							
2020	53	51							
2021	47	44							
2022	32	37							
2023	32	30							
2024		23.70							
2025		17.00							
2026		10.30							
2027		3.60							
2028		-3.10							
SUMMARY OUTPUT									
<i>Regression Statistics</i>									
Multiple R	0.948662165								
R Square	0.899959904								
Adjusted R Square	0.866613205								
Standard Error	4.078398378								
Observations	5								
ANOVA									
	df	SS	MS	F	Significance F				
Regression	1	448.9	448.9	26.98797595	0.013855343				
Residual	3	49.9	16.63333333						
Total	4	498.8							
	Coefficients	Standard Error	t Stat	P-value	Lower 95%	Upper 95%	Lower 95.0%	Upper 95.0%	
Intercept	13584.5	2606.490013	5.211798215	0.013732441	5289.485487	21879.51451	5289.485	21879.51	
X Variable 1	-6.7	1.289702808	-5.194995279	0.013855343	-10.80440994	-2.59559006	-10.8044	-2.59559	

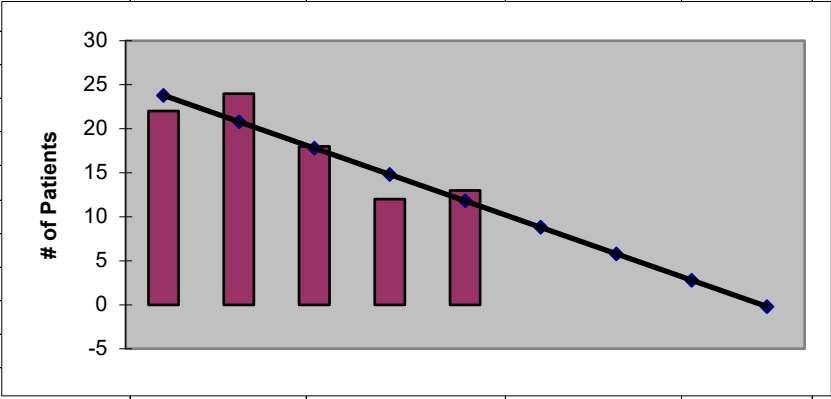


2024
Jefferson County
ESRD Need Projection Methodology

Planning Area		6 Year Utilization Data - Resident Incenter Patients					
Jefferson	2018	2019	2020	2021	2022	2023	
Jefferson County	19	22	24	18	12	13	
TOTALS	19	22	24	18	12	13	
246-310-812(4)(a)	Rate of Change		15.79%	9.09%	-25.00%	-33.33%	8.33%
	6% Growth or Greater?		TRUE	TRUE	FALSE	FALSE	TRUE
	Regression Method:	Linear					
246-310-812(4)(c)		Year 1	Year 2	Year 3	Year 4	Year 5	
		2024	2025	2026	2027	2028	
Projected Resident Incenter Patients	from 246-310-812(4)(b)	8.80	5.80	2.80	-0.20	-3.20	
Station Need for Patients	Divide Resident Incenter by 3.2	2.75	1.81	0.88	-0.06	-1.00	
	Rounded to next whole number	3	2	1	-1	-1	
246-310-812(4)(d)	subtract (4)(c) from approved stations						
Existing CN Approved Stations	Total	6	6	6	6	6	
Results of (4)(c) above		3	2	1	-1	-1	
Net Station Need		3	4	5	7	7	
Negative number indicates need for stations							
Planning Area Facilities							
Name of Center	# of Stations						
PSKC - Port Townsend	6						
Total	6						
Source: Northwest Renal Network / Comagine ESRD Network 16 data 2018-2023							
Most recent year-end data: 2023 posted 02/02/2024							

2024
Jefferson County
ESRD Need Projection Methodology

x	y	Linear							
2019	22	24							
2020	24	21							
2021	18	18							
2022	12	15							
2023	13	12							
2024		8.80							
2025		5.80							
2026		2.80							
2027		-0.20							
2028		-3.20							
SUMMARY OUTPUT									
<i>Regression Statistics</i>									
Multiple R	0.893237001								
R Square	0.79787234								
Adjusted R Square	0.730496454								
Standard Error	2.75680975								
Observations	5								
ANOVA									
	df	SS	MS	F	Significance F				
Regression	1	90	90	11.84210526	0.041198832				
Residual	3	22.8	7.6						
Total	4	112.8							
	Coefficients	Standard Error	t Stat	P-value	Lower 95%	Upper 95%	Lower 95.0%	Upper 95.0%	
Intercept	6080.8	1761.867384	3.451338083	0.040896851	473.7516523	11687.84835	473.7517	11687.85	
X Variable 1	-3	0.871779789	-3.441236008	0.041198832	-5.774392368	-0.22560763	-5.77439	-0.22561	

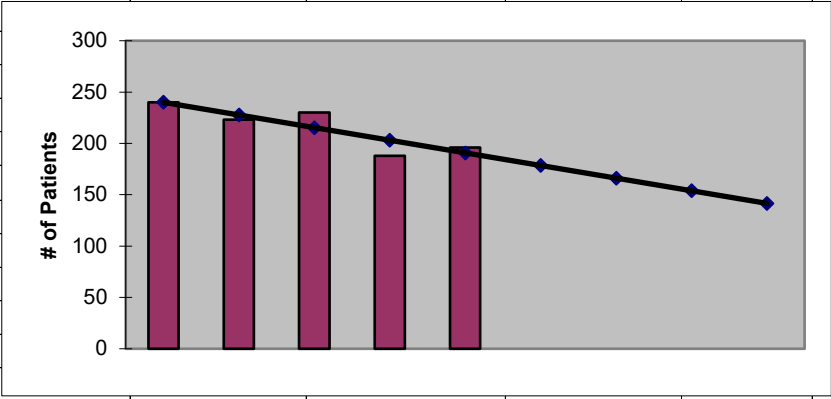


2024
King County 1
ESRD Need Projection Methodology

Planning Area		6 Year Utilization Data - Resident Incenter Patients					
King 1	2018	2019	2020	2021	2022	2023	
98028	13	15	12	12	14	14	
98103	20	24	17	15	13	16	
98105	13	10	11	11	10	12	
98107	10	6	6	4	5	5	
98115	13	17	11	13	13	19	
98117	16	16	23	24	14	18	
98125	45	44	34	41	34	32	
98133	64	61	62	63	51	53	
98155	34	34	37	39	29	20	
98177	17	13	10	8	5	6	
98195	1	0	0	0	0	1	
TOTALS	246	240	223	230	188	196	
246-310-812(4)(a)	Rate of Change		-2.44%	-7.08%	3.14%	-18.26%	4.26%
	6% Growth or Greater?		FALSE	FALSE	FALSE	FALSE	FALSE
	Regression Method:	Linear					
246-310-812(4)(c)			Year 1	Year 2	Year 3	Year 4	Year 5
			2024	2025	2026	2027	2028
Projected Resident Incenter Patients	from 246-310-812(4)(b)		178.50	166.20	153.90	141.60	129.30
Station Need for Patients	Divide Resident Incenter by 4.8		37.19	34.63	32.06	29.50	26.94
	Rounded to next whole number		38	35	33	30	27
246-310-812(4)(d)	subtract (4)(c) from approved stations						
Existing CN Approved Stations	Total		61	61	61	61	61
Results of (4)(c) above			38	35	33	30	27
Net Station Need			23	26	28	31	34
Negative number indicates need for stations							
Planning Area Facilities							
Name of Center	# of Stations						
NKC - Lake City	20						
NKC - Scribner	22						
PSKC-Richmond Beach	19						
Seattle Children's Hosp	9	Note: These stations are not counted in the numeric methodology					
Total	61						
Source: Northwest Renal Network / Comagine ESRD Network 16 data 2018-2023							
Most recent year-end data: 2023 posted 02/02/24							

2024
King County 1
ESRD Need Projection Methodology

x	y	Linear							
2019	240	240							
2020	223	228							
2021	230	215							
2022	188	203							
2023	196	191							
2024		178.50							
2025		166.20							
2026		153.90							
2027		141.60							
2028		129.30							
SUMMARY OUTPUT									
<i>Regression Statistics</i>									
Multiple R	0.869046382								
R Square	0.755241613								
Adjusted R Square	0.673655485								
Standard Error	12.78410471								
Observations	5								
ANOVA									
	<i>df</i>	<i>SS</i>	<i>MS</i>	<i>F</i>	<i>Significance F</i>				
Regression	1	1512.9	1512.9	9.256985519	0.055755782				
Residual	3	490.3	163.4333333						
Total	4	2003.2							
	<i>Coefficients</i>	<i>Standard Error</i>	<i>t Stat</i>	<i>P-value</i>	<i>Lower 95%</i>	<i>Upper 95%</i>	<i>ower 95.0%</i>	<i>pper 95.0%</i>	
Intercept	25073.7	8170.276215	3.068892574	0.054609852	-927.7653537	51075.16535	-927.765	51075.17	
X Variable 1	-12.3	4.042688874	-3.042529461	0.055755782	-25.16564027	0.565640271	-25.1656	0.56564	

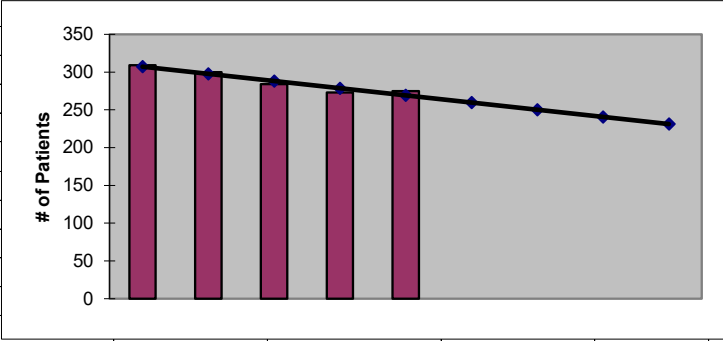


2024
King County 2
ESRD Need Projection Methodology

Planning Area		6 Year Utilization Data - Resident Incenter Patients					
King 2	2018	2019	2020	2021	2022	2023	
98101	19	14	14	8	8	10	
98102	9	7	10	8	6	4	
98104	27	27	25	23	24	25	
98108	38	38	36	39	36	42	
98109	8	11	10	13	16	12	
98112	13	9	15	12	13	13	
98118	95	100	87	83	74	78	
98119	5	4	5	3	5	5	
98121	23	15	16	11	16	13	
98122	42	38	34	36	27	26	
98134	2	2	1	1	3	1	
98144	56	38	42	42	44	45	
98199	4	6	5	5	1	1	
TOTALS	341	309	300	284	273	275	
246-310-812(4)(a)	Rate of Change	-9.38%	-2.91%	-5.33%	-3.87%	0.73%	
	6% Growth or Greater?	FALSE	FALSE	FALSE	FALSE	FALSE	
	Regression Method:	Linear					
246-310-812(4)(c)		Year 1	Year 2	Year 3	Year 4	Year 5	
		2024	2025	2026	2027	2028	
Projected Resident Incenter Patients	from 246-310-812(4)(b)	259.70	250.20	240.70	231.20	221.70	
Station Need for Patients	Divide Resident Incenter by 4.8	54.10	52.13	50.15	48.17	46.19	
	Rounded to next whole number	55	53	51	49	47	
246-310-812(4)(d)	subtract (4)(c) from approved stations						
Existing CN Approved Stations	Total	91	91	91	91	91	
Results of (4)(c) above		55	53	51	49	47	
Net Station Need		36	38	40	42	44*	
Negative number indicates need for stations							
					*Application in process		
Planning Area Facilities							
Name of Center	# of Stations						
NKC Yesler Terrace	52						
NKC Rainier Beach	19						
DaVita Olympic View	20						
Total	91						
Source: Northwest Renal Network / Comagine ESRD Network 16 data 2018-2023							
Most recent year-end data: 2023 posted 02/02/2024							

2024
King County 2
ESRD Need Projection Methodology

x	y	Linear							
2019	309	307							
2020	300	298							
2021	284	288							
2022	273	279							
2023	275	269							
2024		259.70							
2025		250.20							
2026		240.70							
2027		231.20							
2028		221.70							
SUMMARY OUTPUT									
<i>Regression Statistics</i>									
Multiple R	0.952479675								
R Square	0.907217531								
Adjusted R Square	0.876290042								
Standard Error	5.546770832								
Observations	5								
ANOVA									
	df	SS	MS	F	Significance F				
Regression	1	902.5	902.5	29.33369447	0.012346187				
Residual	3	92.3	30.76666667						
Total	4	994.8							
	Coefficients	Standard Error	t Stat	P-value	Lower 95%	Upper 95%	Lower 95.0%	Upper 95.0%	
Intercept	19487.7	3544.921668	5.497357016	0.011845422	8206.177136	30769.22286	8206.177	30769.22	
X Variable 1	-9.5	1.754042949	-5.416058943	0.012346187	-15.0821475	-3.9178525	-15.0821	-3.91785	

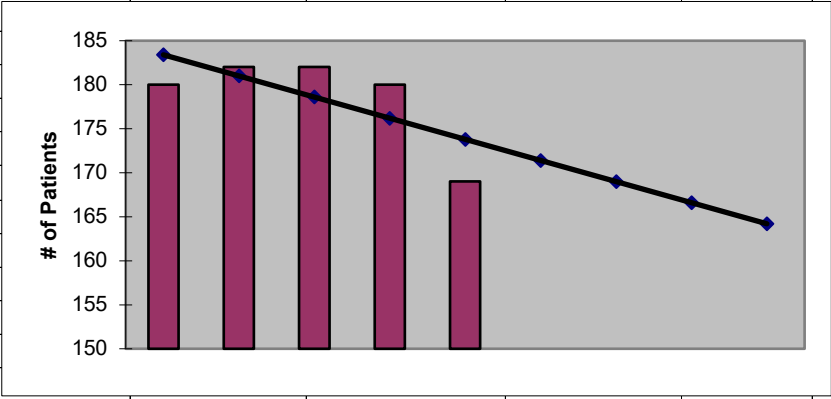


2024
King County 3
ESRD Need Projection Methodology

Planning Area		6 Year Utilization Data - Resident Incenter Patients					
King 3		2018	2019	2020	2021	2022	2023
	98070	3	0	0	0	2	0
	98106	29	36	33	32	34	41
	98116	10	13	10	14	14	9
	98126	21	16	18	19	15	19
	98136	5	7	8	6	5	2
	98146	42	43	42	40	40	35
	98168	61	65	71	71	70	63
	TOTALS	171	180	182	182	180	169
246-310-812(4)(a)	Rate of Change		5.26%	1.11%	0.00%	-1.10%	-6.11%
	6% Growth or Greater?		FALSE	FALSE	FALSE	FALSE	FALSE
	Regression Method:	Linear					
246-310-812(4)(c)			Year 1	Year 2	Year 3	Year 4	Year 5
			2024	2025	2026	2027	2028
Projected Resident Incenter Patients	from 246-310-812(4)(b)		171.40	169.00	166.60	164.20	161.80
Station Need for Patients	Divide Resident Incenter by 4.8		35.71	35.21	34.71	34.21	33.71
	Rounded to next whole number		36	36	35	35	34
246-310-812(4)(d)	subtract (4)(c) from approved stations						
Existing CN Approved Stations	Total		36	36	36	36	36
Results of (4)(c) above			36	36	35	35	34
Net Station Need			0	0	1	1	2
Negative number indicates need for stations							
Planning Area Facilities							
Name of Center	# of Stations						
NKC Burien	22						
DaVita Westwood	14						
Total	36						
Source: Northwest Renal Network / Comagine ESRD Network 16 data 2018-2023							
Most recent year-end data: 2023 posted 02/02/2024							

**2024
King County 3
ESRD Need Projection Methodology**

x	y	Linear							
2019	180	183							
2020	182	181							
2021	182	179							
2022	180	176							
2023	169	174							
2024		171.40							
2025		169.00							
2026		166.60							
2027		164.20							
2028		161.80							
SUMMARY OUTPUT									
<i>Regression Statistics</i>									
Multiple R	0.695141336								
R Square	0.483221477								
Adjusted R Square	0.310961969								
Standard Error	4.531372125								
Observations	5								
ANOVA									
	df	SS	MS	F	Significance F				
Regression	1	57.6	57.6	2.805194805	0.19255293				
Residual	3	61.6	20.53333333						
Total	4	119.2							
	Coefficients	Standard Error	t Stat	P-value	Lower 95%	Upper 95%	Lower 95.0%	Upper 95.0%	
Intercept	5029	2895.983936	1.736542781	0.180866733	-4187.313379	14245.31338	-4187.31	14245.31	
X Variable 1	-2.4	1.432945684	-1.674871579	0.19255293	-6.960272698	2.160272698	-6.96027	2.160273	

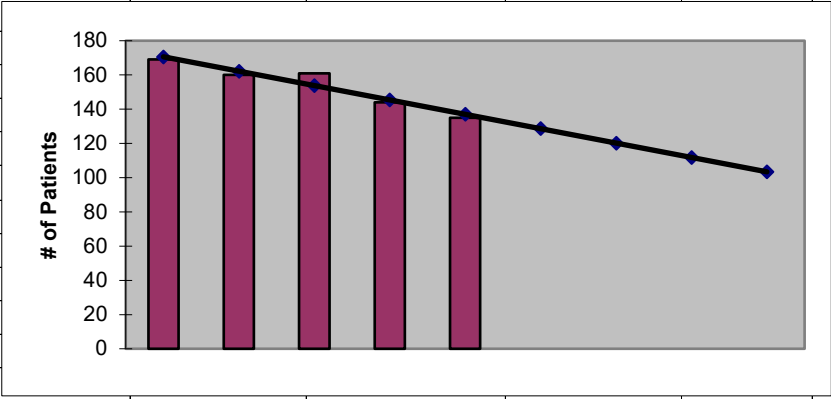


2024
King County 4
ESRD Need Projection Methodology

Planning Area		6 Year Utilization Data - Resident Incenter Patients					
King 4	2018	2019	2020	2021	2022	2023	
98148	20	21	18	20	17	12	
98158	0	0	0	0	0	0	
98166	18	25	21	21	25	22	
98188	41	49	49	47	35	36	
98198	63	74	72	73	67	65	
TOTALS	142	169	160	161	144	135	
246-310-812(4)(a)	Rate of Change		19.01%	-5.33%	0.63%	-10.56%	-6.25%
	6% Growth or Greater?		TRUE	FALSE	FALSE	FALSE	FALSE
	Regression Method:	Linear					
246-310-812(4)(c)		Year 1	Year 2	Year 3	Year 4	Year 5	
		2024	2025	2026	2027	2028	
Projected Resident Incenter Patients	from 246-310-812(4)(b)	128.60	120.20	111.80	103.40	95.00	
Station Need for Patients	Divide Resident Incenter by 4.8	26.79	25.04	23.29	21.54	19.79	
	Rounded to next whole number	27	26	24	22	20	
246-310-812(4)(d)	subtract (4)(c) from approved stations						
Existing CN Approved Stations	Total	43	43	43	43	43	
Results of (4)(c) above		27	26	24	22	20	
Net Station Need		16	17	19	21	23	
Negative number indicates need for stations							
Planning Area Facilities							
Name of Center	# of Stations						
NKC - SeaTac	43						
Total	43						
Source: Northwest Renal Network / Comagine ESRD Network 16 data 2018-2023							
Most recent year-end data: 2023 posted 02/02/2024							

2024
King County 4
ESRD Need Projection Methodology

x	y	Linear							
2019	169	171							
2020	160	162							
2021	161	154							
2022	144	145							
2023	135	137							
2024		128.60							
2025		120.20							
2026		111.80							
2027		103.40							
2028		95.00							
SUMMARY OUTPUT									
<i>Regression Statistics</i>									
Multiple R	0.956771947								
R Square	0.915412558								
Adjusted R Square	0.887216745								
Standard Error	4.66190233								
Observations	5								
ANOVA									
	<i>df</i>	<i>SS</i>	<i>MS</i>	<i>F</i>	<i>Significance F</i>				
Regression	1	705.6	705.6	32.46625767	0.010718799				
Residual	3	65.2	21.73333333						
Total	4	770.8							
	<i>Coefficients</i>	<i>Standard Error</i>	<i>t Stat</i>	<i>P-value</i>	<i>Lower 95%</i>	<i>Upper 95%</i>	<i>ower 95.0%</i>	<i>pper 95.0%</i>	
Intercept	17130.2	2979.40533	5.749536603	0.010451737	7648.402516	26611.99748	7648.403	26612	
X Variable 1	-8.4	1.474222959	-5.697916959	0.010718799	-13.09163541	-3.70836459	-13.0916	-3.70836	

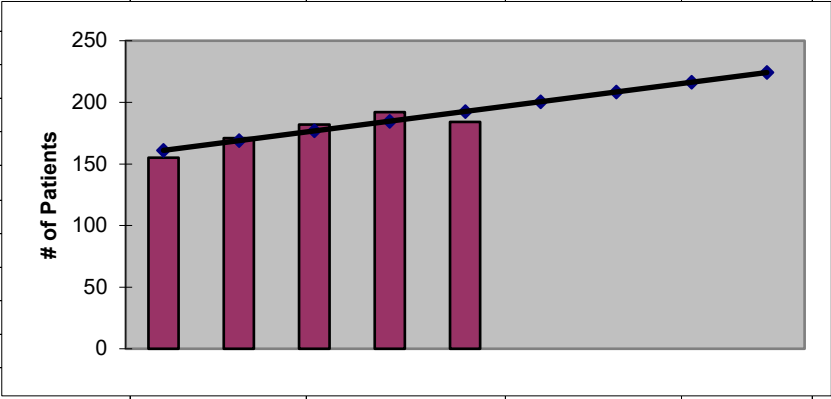


2024
King County 5
ESRD Need Projection Methodology

Planning Area		6 Year Utilization Data - Resident Incenter Patients					
King 5		2018	2019	2020	2021	2022	2023
	98003	78	92	97	97	103	100
	98023	64	63	74	85	89	84
	TOTALS	142	155	171	182	192	184
246-310-812(4)(a)	Rate of Change		9.15%	10.32%	6.43%	5.49%	-4.17%
	6% Growth or Greater?		TRUE	TRUE	TRUE	FALSE	FALSE
	Regression Method:	Linear					
246-310-812(4)(c)			Year 1	Year 2	Year 3	Year 4	Year 5
			2024	2025	2026	2027	2028
Projected Resident Incenter Patients	from 246-310-812(4)(b)		200.50	208.40	216.30	224.20	232.10
Station Need for Patients	Divide Resident Incenter by 4.8		41.77	43.42	45.06	46.71	48.35
	Rounded to next whole number		42	44	46	47	49
246-310-812(4)(d)	subtract (4)(c) from approved stations						
Existing CN Approved Stations	Total		44	44	44	44	44
Results of (4)(c) above			42	44	46	47	49
Net Station Need			2	0	-2	-3	-5
Negative number indicates need for stations							
Planning Area Facilities							
Name of Center	# of Stations						
DaVita Fed Way Comm	18						
DaVita Redondo Heights	18						
NKC Federal Way West	8						
Total	44						
Source: Northwest Renal Network / Comagine ESRD Network 16 data 2018-2023							
Most recent year-end data: 2023 posted 02/02/2024							

2024
King County 5
ESRD Need Projection Methodology

x	y	Linear							
2019	155	161							
2020	171	169							
2021	182	177							
2022	192	185							
2023	184	193							
2024		200.50							
2025		208.40							
2026		216.30							
2027		224.20							
2028		232.10							
SUMMARY OUTPUT									
<i>Regression Statistics</i>									
Multiple R	0.873048106								
R Square	0.762212995								
Adjusted R Square	0.68295066								
Standard Error	8.056053624								
Observations	5								
ANOVA									
	df	SS	MS	F	Significance F				
Regression	1	624.1	624.1	9.61633282	0.053253075				
Residual	3	194.7	64.9						
Total	4	818.8							
	Coefficients	Standard Error	t Stat	P-value	Lower 95%	Upper 95%	Lower 95.0%	Upper 95.0%	
Intercept	-15789.1	5148.595446	-3.066681033	0.054704836	-32174.22856	596.0285556	-32174.2	596.0286	
X Variable 1	7.9	2.547547841	3.101021254	0.053253075	-0.207434213	16.00743421	-0.20743	16.00743	

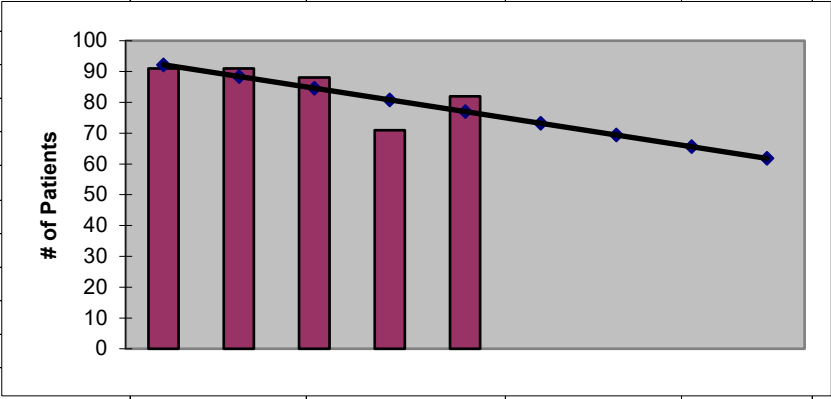


2024
King County 6
ESRD Need Projection Methodology

Planning Area		6 Year Utilization Data - Resident Incenter Patients					
King 6		2018	2019	2020	2021	2022	2023
	98011	7	12	16	12	9	13
	98033	15	17	16	16	13	12
	98034	30	29	24	23	19	27
	98052	21	22	21	22	16	16
	98053	4	5	5	4	2	0
	98072	6	4	5	8	7	8
	98077	1	2	4	3	5	6
	TOTALS	84	91	91	88	71	82
246-310-812(4)(a)	Rate of Change		8.33%	0.00%	-3.30%	-19.32%	15.49%
	6% Growth or Greater?		TRUE	FALSE	FALSE	FALSE	TRUE
	Regression Method:	Linear					
246-310-812(4)(c)			Year 1	Year 2	Year 3	Year 4	Year 5
			2024	2025	2026	2027	2028
Projected Resident Incenter Patients	from 246-310-812(4)(b)		73.20	69.40	65.60	61.80	58.00
Station Need for Patients	Divide Resident Incenter by 4.8		15.25	14.46	13.67	12.88	12.08
	Rounded to next whole number		16	15	14	13	13
246-310-812(4)(d)	subtract (4)(c) from approved stations						
Existing CN Approved Stations	Total		26	26	26	26	26
Results of (4)(c) above			16	15	14	13	13
Net Station Need			10	11	12	13	13
Negative number indicates need for stations							
Planning Area Facilities							
Name of Center	# of Stations						
NKC Kirkland Kidney Ce	26						
Total	26						
Source: Northwest Renal Network / Comagine ESRD Network 16 data 2018-2023							
Most recent year-end data: 2023 posted 02/02/2024							

2024
King County 6
ESRD Need Projection Methodology

x	y	Linear						
2019	91	92						
2020	91	88						
2021	88	85						
2022	71	81						
2023	82	77						
2024		73.20						
2025		69.40						
2026		65.60						
2027		61.80						
2028		58.00						
SUMMARY OUTPUT								
<i>Regression Statistics</i>								
Multiple R	0.711555592							
R Square	0.50631136							
Adjusted R Square	0.341748481							
Standard Error	6.850790709							
Observations	5							
ANOVA								
	df	SS	MS	F	Significance F			
Regression	1	144.4	144.4	3.076704545	0.17769743			
Residual	3	140.8	46.93333333					
Total	4	285.2						
	Coefficients	Standard Error	t Stat	P-value	Lower 95%	Upper 95%	Lower 95.0%	Upper 95.0%
Intercept	7764.4	4378.316169	1.773375814	0.174273899	-6169.356117	21698.15612	-6169.36	21698.16
X Variable 1	-3.8	2.166410241	-1.754053746	0.17769743	-10.69448427	3.094484268	-10.6945	3.094484

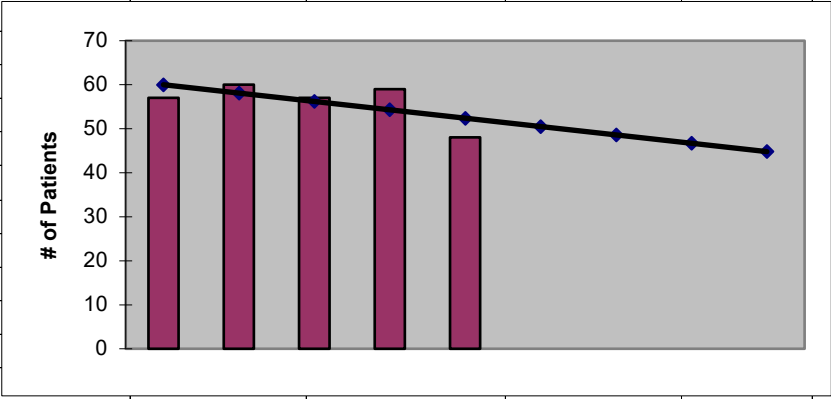


2024
King County 7
ESRD Need Projection Methodology

Planning Area		6 Year Utilization Data - Resident Incenter Patients					
King 7		2018	2019	2020	2021	2022	2023
	98004	8	9	15	8	11	7
	98005	6	3	1	1	2	3
	98006	11	15	13	14	14	10
	98007	15	16	12	14	12	9
	98008	9	10	12	12	13	13
	98039	0	0	0	0	0	0
	98040	4	4	7	8	7	6
	TOTALS	53	57	60	57	59	48
246-310-812(4)(a)	Rate of Change		7.55%	5.26%	-5.00%	3.51%	-18.64%
	6% Growth or Greater?		TRUE	FALSE	FALSE	FALSE	FALSE
	Regression Method:	Linear					
246-310-812(4)(c)			Year 1	Year 2	Year 3	Year 4	Year 5
			2024	2025	2026	2027	2028
Projected Resident Incenter Patients	from 246-310-812(4)(b)		50.50	48.60	46.70	44.80	42.90
Station Need for Patients	Divide Resident Incenter by 4.8		10.52	10.12	9.73	9.33	8.94
	Rounded to next whole number		11	11	10	10	9
246-310-812(4)(d)	subtract (4)(c) from approved stations						
Existing CN Approved Stations	Total		29	29	29	29	29
Results of (4)(c) above			11	11	10	10	9
Net Station Need			18	18	19	19	20
Negative number indicates need for stations							
Planning Area Facilities							
Name of Center	# of Stations						
DaVita Bellevue	11						
NKC - Bellevue Kidney	18						
Total	29						
Source: Northwest Renal Network / Comagine ESRD Network 16 data 2018-2023							
Most recent year-end data: 2023 posted 02/02/2024							

2024
King County 7
ESRD Need Projection Methodology

x	y	Linear							
2019	57	60							
2020	60	58							
2021	57	56							
2022	59	54							
2023	48	52							
2024		50.50							
2025		48.60							
2026		46.70							
2027		44.80							
2028		42.90							
SUMMARY OUTPUT									
<i>Regression Statistics</i>									
Multiple R	0.630537146								
R Square	0.397577093								
Adjusted R Square	0.196769457								
Standard Error	4.270050741								
Observations	5								
ANOVA									
	df	SS	MS	F	Significance F				
Regression	1	36.1	36.1	1.979890311	0.254109409				
Residual	3	54.7	18.23333333						
Total	4	90.8							
	Coefficients	Standard Error	t Stat	P-value	Lower 95%	Upper 95%	Lower 95.0%	Upper 95.0%	
Intercept	3896.1	2728.974362	1.427679224	0.248678996	-4788.714376	12580.91438	-4788.71	12580.91	
X Variable 1	-1.9	1.350308607	-1.407085751	0.254109409	-6.197284636	2.397284636	-6.19728	2.397285	

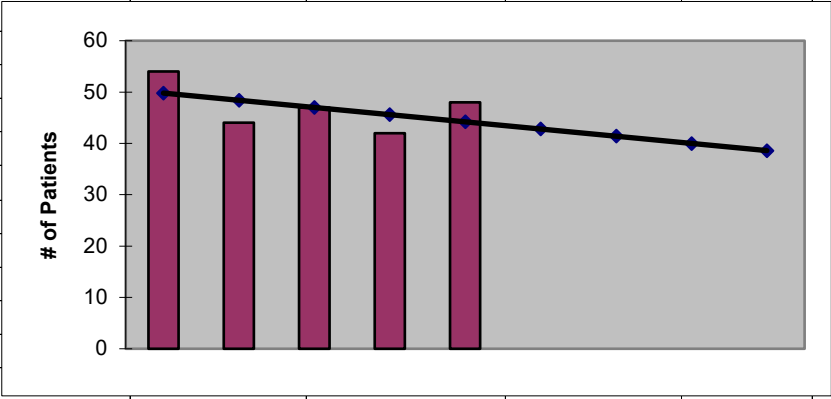


2024
King County 8
ESRD Need Projection Methodology

Planning Area		6 Year Utilization Data - Resident Incenter Patients					
King 8		2018	2019	2020	2021	2022	2023
	98014	2	2	2	4	4	1
	98019	2	5	7	4	4	7
	98024	3	3	1	1	3	2
	98027	12	12	8	10	9	8
	98029	10	10	9	9	6	8
	98045	9	10	5	5	2	5
	98065	7	7	6	4	4	4
	98074	6	1	4	6	6	10
	98075	4	4	2	4	4	3
	TOTALS	55	54	44	47	42	48
246-310-812(4)(a)	Rate of Change		-1.82%	-18.52%	6.82%	-10.64%	14.29%
	6% Growth or Greater?		FALSE	FALSE	TRUE	FALSE	TRUE
	Regression Method:	Linear					
246-310-812(4)(c)			Year 1	Year 2	Year 3	Year 4	Year 5
			2024	2025	2026	2027	2028
Projected Resident Incenter Patients	from 246-310-812(4)(b)		42.80	41.40	40.00	38.60	37.20
Station Need for Patients	Divide Resident Incenter by 4.8		8.92	8.62	8.33	8.04	7.75
	Rounded to next whole number		9	9	9	9	8
246-310-812(4)(d)	subtract (4)(c) from approved stations						
Existing CN Approved Stations	Total		13	13	13	13	13
Results of (4)(c) above			9	9	9	9	8
Net Station Need			4	4	4	4	5
Negative number indicates need for stations							
Planning Area Facilities							
Name of Center	# of Stations						
NKC - Snoqualmie Ridge	9						
DaVita Issaquah	4						
Total	13						
Source: Northwest Renal Network / Comagine ESRD Network 16 data 2018-2023							
Most recent year-end data: 2023 posted 02/02/2024							

2024
King County 8
ESRD Need Projection Methodology

x	y	Linear						
2019	54	50						
2020	44	48						
2021	47	47						
2022	42	46						
2023	48	44						
2024		42.80						
2025		41.40						
2026		40.00						
2027		38.60						
2028		37.20						
SUMMARY OUTPUT								
<i>Regression Statistics</i>								
Multiple R	0.483045892							
R Square	0.233333333							
Adjusted R Square	-0.022222222							
Standard Error	4.633213428							
Observations	5							
ANOVA								
	df	SS	MS	F	Significance F			
Regression	1	19.6	19.6	0.913043478	0.40980087			
Residual	3	64.4	21.46666667					
Total	4	84						
	Coefficients	Standard Error	t Stat	P-value	Lower 95%	Upper 95%	Lower 95.0%	Upper 95.0%
Intercept	2876.4	2961.070354	0.971405491	0.402995788	-6547.047407	12299.84741	-6547.05	12299.85
X Variable 1	-1.4	1.465150732	-0.955533086	0.40980087	-6.062763533	3.262763533	-6.06276	3.262764

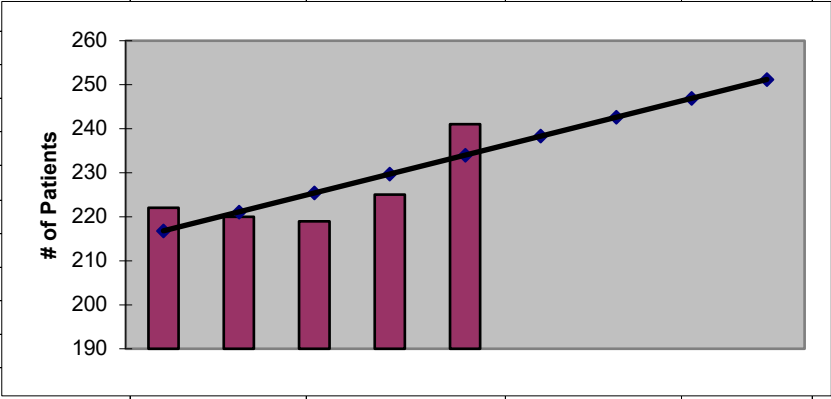


2024
King County 9
ESRD Need Projection Methodology

Planning Area		6 Year Utilization Data - Resident Incenter Patients					
King 9		2018	2019	2020	2021	2022	2023
	98055	24	23	17	23	36	29
	98056	46	44	44	37	38	41
	98057	27	20	21	27	29	31
	98058	50	46	50	42	51	59
	98059	28	38	38	35	22	27
	98178	56	51	50	55	49	54
TOTALS		231	222	220	219	225	241
246-310-812(4)(a)	Rate of Change		-3.90%	-0.90%	-0.45%	2.74%	7.11%
	6% Growth or Greater?		FALSE	FALSE	FALSE	FALSE	TRUE
	Regression Method:	Linear					
246-310-812(4)(c)			Year 1	Year 2	Year 3	Year 4	Year 5
			2024	2025	2026	2027	2028
Projected Resident Incenter Patients	from 246-310-812(4)(b)		238.30	242.60	246.90	251.20	255.50
Station Need for Patients	Divide Resident Incenter by 4.8		49.65	50.54	51.44	52.33	53.23
	Rounded to next whole number		50	51	52	53	54
246-310-812(4)(d)	subtract (4)(c) from approved stations						
Existing CN Approved Stations	Total		47	47	47	47	47
Results of (4)(c) above			50	51	52	53	54
Net Station Need			-3	-4	-5	-6	-7
Negative number indicates need for stations							
Planning Area Facilities							
Name of Center	# of Stations						
NKC Renton Kidney Center	34						
DaVita Renton Dialysis Center	7						
FKC Cascade Peak	6						
Total	47						
Source: Northwest Renal Network / Comagine ESRD Network 16 data 2018-2023							
Most recent year-end data: 2023 posted 02/02/2024							

2024
King County 9
ESRD Need Projection Methodology

x	y	Linear							
2019	222	217							
2020	220	221							
2021	219	225							
2022	225	230							
2023	241	234							
2024		238.30							
2025		242.60							
2026		246.90							
2027		251.20							
2028		255.50							
SUMMARY OUTPUT									
<i>Regression Statistics</i>									
Multiple R	0.754037921								
R Square	0.568573186								
Adjusted R Square	0.424764248								
Standard Error	6.838615844								
Observations	5								
ANOVA									
	df	SS	MS	F	Significance F				
Regression	1	184.9	184.9	3.953670706	0.14090482				
Residual	3	140.3	46.76666667						
Total	4	325.2							
	Coefficients	Standard Error	t Stat	P-value	Lower 95%	Upper 95%	Lower 95.0%	Upper 95.0%	
Intercept	-8464.9	4370.535257	-1.936810826	0.148173812	-22373.89378	5444.09378	-22373.9	5444.094	
X Variable 1	4.3	2.162560211	1.988383943	0.14090482	-2.582231754	11.18223175	-2.58223	11.18223	

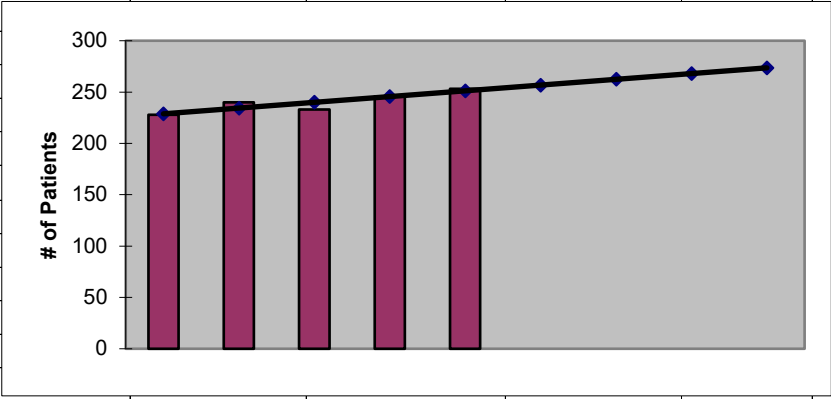


2024
King County 10
ESRD Need Projection Methodology

Planning Area		6 Year Utilization Data - Resident Incenter Patients					
King 10	2018	2019	2020	2021	2022	2023	
98030	45	48	58	63	66	59	
98031	50	52	57	57	59	57	
98032	63	61	51	46	64	81	
98038	8	10	13	20	17	15	
98042	46	53	59	46	38	39	
98051	2	4	2	1	2	2	
TOTALS	214	228	240	233	246	253	
246-310-812(4)(a)	Rate of Change		6.54%	5.26%	-2.92%	5.58%	2.85%
	6% Growth or Greater?		TRUE	FALSE	FALSE	FALSE	FALSE
	Regression Method:	Linear					
246-310-812(4)(c)		Year 1	Year 2	Year 3	Year 4	Year 5	
		2024	2025	2026	2027	2028	
Projected Resident Incenter Patients	from 246-310-812(4)(b)	256.80	262.40	268.00	273.60	279.20	
Station Need for Patients	Divide Resident Incenter by 4.8	53.50	54.67	55.83	57.00	58.17	
	Rounded to next whole number	54	55	56	58	59	
246-310-812(4)(d)	subtract (4)(c) from approved stations						
Existing CN Approved Stations	Total	61	61	61	61	61	
Results of (4)(c) above		54	55	56	58	59	
Net Station Need		7	6	5	3	2	
Negative number indicates need for stations							
Planning Area Facilities							
Name of Center	# of Stations						
DaVita Kent Community	23						
NKC Kent (New Facility)	11						
NKC Kent Kidney Cente	27						
Total	61						
Source: Northwest Renal Network / Comagine ESRD Network 16 data 2018-2023							
Most recent year-end data: 2023 posted 02/02/2024							

2024
King County 10
ESRD Need Projection Methodology

x	y	Linear							
2019	228	229							
2020	240	234							
2021	233	240							
2022	246	246							
2023	253	251							
2024		256.80							
2025		262.40							
2026		268.00							
2027		273.60							
2028		279.20							
SUMMARY OUTPUT									
<i>Regression Statistics</i>									
Multiple R	0.887659675								
R Square	0.787939698								
Adjusted R Square	0.717252931								
Standard Error	5.304086475								
Observations	5								
ANOVA									
	df	SS	MS	F	Significance F				
Regression	1	313.6	313.6	11.14691943	0.044430412				
Residual	3	84.4	28.13333333						
Total	4	398							
	Coefficients	Standard Error	t Stat	P-value	Lower 95%	Upper 95%	Lower 95.0%	Upper 95.0%	
Intercept	-11077.6	3389.822951	-3.267899286	0.046851229	-21865.52953	-289.670474	-21865.5	-289.67	
X Variable 1	5.6	1.677299417	3.338700261	0.044430412	0.262084668	10.93791533	0.262085	10.93792	

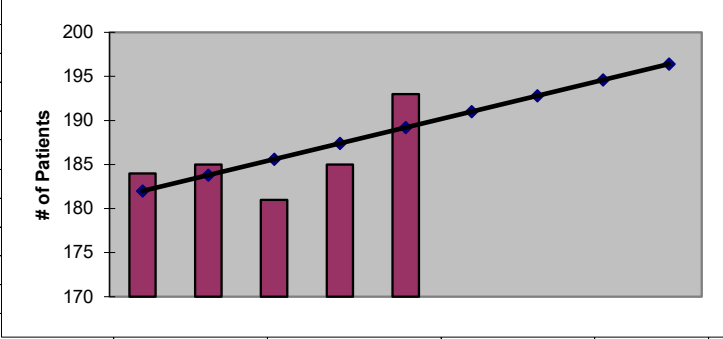


2024
King County 11
ESRD Need Projection Methodology

Planning Area		6 Year Utilization Data - Resident Incenter Patients					
King 11	2018	2019	2020	2021	2022	2023	
98001	33	33	41	46	47	51	
98002	86	85	89	92	94	92	
98010	2	2	0	0	0	1	
98047	9	13	12	9	9	5	
98092	41	51	43	34	35	44	
TOTALS	171	184	185	181	185	193	
246-310-812(4)(a)	Rate of Change		7.60%	0.54%	-2.16%	2.21%	4.32%
	6% Growth or Greater?		TRUE	FALSE	FALSE	FALSE	FALSE
	Regression Method:	Linear					
246-310-812(4)(c)		Year 1	Year 2	Year 3	Year 4	Year 5	
		2024	2025	2026	2027	2028	
Projected Resident Incenter Patients	from 246-310-812(4)(b)	191.00	192.80	194.60	196.40	198.20	
Station Need for Patients	Divide Resident Incenter by 4.8	39.79	40.17	40.54	40.92	41.29	
	Rounded to next whole number	40	41	41	41	42	
246-310-812(4)(d)	subtract (4)(c) from approved stations						
Existing CN Approved Stations	Total	52	52	52	52	52	
Results of (4)(c) above		40	41	41	41	42	
Net Station Need		12	11	11	11	10	
Negative number indicates need for stations							
Planning Area Facilities							
Name of Center	# of Stations						
NKC Auburn	14						
NKC Federal Way East	16						
DaVita Auburn Valley	22						
Total	52						
Source: Northwest Renal Network / Comagine ESRD Network 16 data 2018-2023							
Most recent year-end data: 2023 posted 02/02/2024							

2024
King County 11
ESRD Need Projection Methodology

x	y	Linear							
2019	184	182							
2020	185	184							
2021	181	186							
2022	185	187							
2023	193	189							
2024		191.00							
2025		192.80							
2026		194.60							
2027		196.40							
2028		198.20							
SUMMARY OUTPUT									
<i>Regression Statistics</i>									
Multiple R	0.639602149								
R Square	0.409090909								
Adjusted R Square	0.212121212								
Standard Error	3.949683532								
Observations	5								
ANOVA									
	df	SS	MS	F	Significance F				
Regression	1	32.4	32.4	2.076923077	0.245193882				
Residual	3	46.8	15.6						
Total	4	79.2							
	Coefficients	Standard Error	t Stat	P-value	Lower 95%	Upper 95%	Lower 95.0%	Upper 95.0%	
Intercept	-3452.2	2524.228809	-1.367625624	0.264874355	-11485.42265	4581.022647	-11485.4	4581.023	
X Variable 1	1.8	1.2489996	1.441153384	0.245193882	-2.174874161	5.774874161	-2.17487	5.774874	

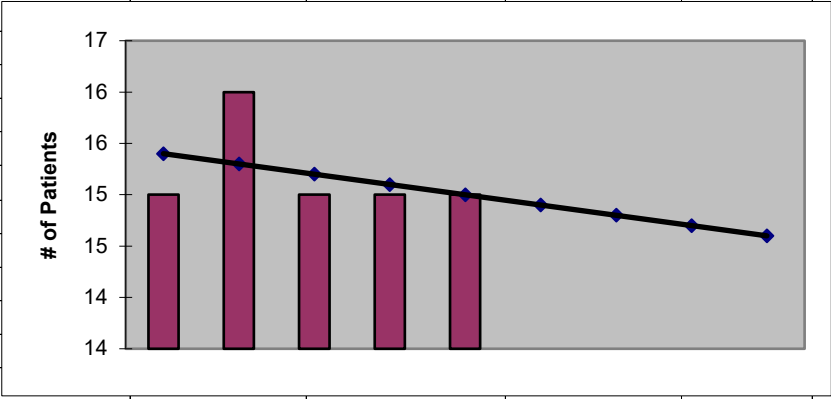


2024
King County 12
ESRD Need Projection Methodology

Planning Area		6 Year Utilization Data - Resident Incenter Patients					
King 12		2018	2019	2020	2021	2022	2023
98022		14	15	16	15	15	15
TOTALS		14	15	16	15	15	15
246-310-812(4)(a)	Rate of Change		7.14%	6.67%	-6.25%	0.00%	0.00%
	6% Growth or Greater?		TRUE	TRUE	FALSE	FALSE	FALSE
	Regression Method:	Linear					
246-310-812(4)(c)			Year 1	Year 2	Year 3	Year 4	Year 5
			2024	2025	2026	2027	2028
Projected Resident Incenter Patients	from 246-310-812(4)(b)		14.90	14.80	14.70	14.60	14.50
Station Need for Patients	Divide Resident Incenter by 4.8		3.10	3.08	3.06	3.04	3.02
	Rounded to next whole number		4	4	4	4	4
246-310-812(4)(d)	subtract (4)(c) from approved stations						
Existing CN Approved Stations	Total		10	10	10	10	10
Results of (4)(c) above			4	4	4	4	4
Net Station Need			6	6	6	6	6
Negative number indicates need for stations							
Planning Area Facilities							
Name of Center	# of Stations						
NKC Enumclaw	10						
Total	10						
Source: Northwest Renal Network / Comagine ESRD Network 16 data 2018-2023							
Most recent year-end data: 2023 posted 02/02/2024							

2024
King County 12
ESRD Need Projection Methodology

x	y	Linear							
2019	15	15							
2020	16	15							
2021	15	15							
2022	15	15							
2023	15	15							
2024		14.90							
2025		14.80							
2026		14.70							
2027		14.60							
2028		14.50							
SUMMARY OUTPUT									
<i>Regression Statistics</i>									
Multiple R	0.353553391								
R Square	0.125								
Adjusted R Square	-0.166666667								
Standard Error	0.483045892								
Observations	5								
ANOVA									
	df	SS	MS	F	Significance F				
Regression	1	0.1	0.1	0.428571429	0.559404344				
Residual	3	0.7	0.233333333						
Total	4	0.8							
	Coefficients	Standard Error	t Stat	P-value	Lower 95%	Upper 95%	Lower 95.0%	Upper 95.0%	
Intercept	217.3	308.7129249	0.703890192	0.532217235	-765.1623072	1199.762307	-765.162	1199.762	
X Variable 1	-0.1	0.152752523	-0.654653671	0.559404344	-0.586126703	0.386126703	-0.58613	0.386127	

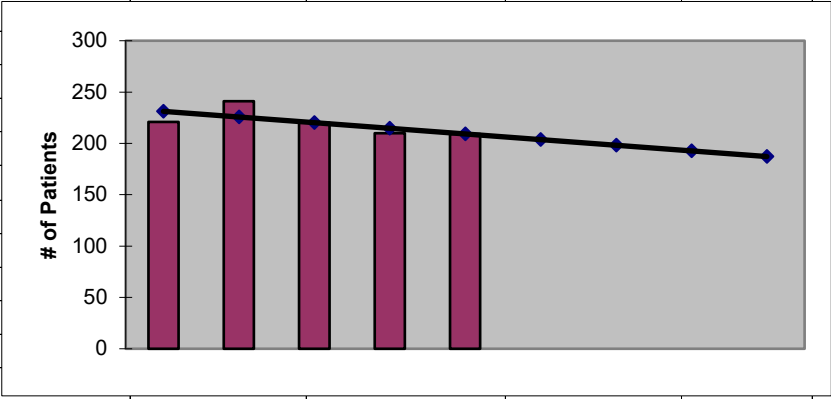


2024
Kitsap County
ESRD Need Projection Methodology

Planning Area		6 Year Utilization Data - Resident Incenter Patients					
Kitsap		2018	2019	2020	2021	2022	2023
Kitsap County		220	221	241	220	210	209
TOTALS		220	221	241	220	210	209
246-310-812(4)(a)	Rate of Change		0.45%	9.05%	-8.71%	-4.55%	-0.48%
	6% Growth or Greater?		FALSE	TRUE	FALSE	FALSE	FALSE
	Regression Method:	Linear					
246-310-812(4)(c)			Year 1	Year 2	Year 3	Year 4	Year 5
			2024	2025	2026	2027	2028
Projected Resident Incenter Patients	from 246-310-812(4)(b)		203.70	198.20	192.70	187.20	181.70
Station Need for Patients	Divide Resident Incenter by 4.8		42.44	41.29	40.15	39.00	37.85
	Rounded to next whole number		43	42	41	40	38
246-310-812(4)(d)	subtract (4)(c) from approved stations						
Existing CN Approved Stations	Total		48	48	48	48	48
Results of (4)(c) above			43	42	41	40	38
Net Station Need			5	6	7	8	10
Negative number indicates need for stations							
Planning Area Facilities							
Name of Center	# of Stations						
PSKC Bremerton	19						
PSKC South	11						
PSKC North	10						
PSKC Silverdale	8						
Total	48						
Source: Northwest Renal Network / Comagine ESRD Network 16 data 2018-2023							
Most recent year-end data: 2023 posted 02/02/2024							

**2024
Kitsap County
ESRD Need Projection Methodology**

x	y	Linear						
2019	221	231						
2020	241	226						
2021	220	220						
2022	210	215						
2023	209	209						
2024		203.70						
2025		198.20						
2026		192.70						
2027		187.20						
2028		181.70						
SUMMARY OUTPUT								
<i>Regression Statistics</i>								
Multiple R	0.675571686							
R Square	0.456397103							
Adjusted R Square	0.275196138							
Standard Error	10.95901455							
Observations	5							
ANOVA								
	df	SS	MS	F	Significance F			
Regression	1	302.5	302.5	2.518734388	0.210696544			
Residual	3	360.3	120.1					
Total	4	662.8						
	Coefficients	Standard Error	t Stat	P-value	Lower 95%	Upper 95%	Lower 95.0%	Upper 95.0%
Intercept	11335.7	7003.867534	1.61849149	0.203989156	-10953.73236	33625.13236	-10953.7	33625.13
X Variable 1	-5.5	3.46554469	-1.587052106	0.210696544	-16.5289099	5.528909895	-16.5289	5.52891

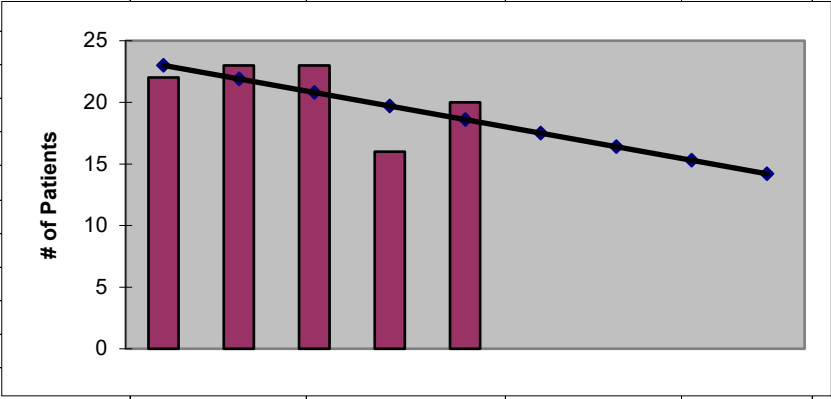


2024
Kittitas County
ESRD Need Projection Methodology

Planning Area		6 Year Utilization Data - Resident Incenter Patients					
Kittitas		2018	2019	2020	2021	2022	2023
Kittitas County		28	22	23	23	16	20
TOTALS		28	22	23	23	16	20
246-310-812(4)(a)	Rate of Change		-21.43%	4.55%	0.00%	-30.43%	25.00%
	6% Growth or Greater?		FALSE	FALSE	FALSE	FALSE	TRUE
	Regression Method:	Linear					
246-310-812(4)(c)			Year 1	Year 2	Year 3	Year 4	Year 5
			2024	2025	2026	2027	2028
Projected Resident Incenter Patients	from 246-310-812(4)(b)		17.50	16.40	15.30	14.20	13.10
Station Need for Patients	Divide Resident Incenter by 3.2		5.47	5.13	4.78	4.44	4.09
	Rounded to next whole number		6	6	5	5	5
246-310-812(4)(d)	subtract (4)(c) from approved stations						
Existing CN Approved Stations	Total		7	7	7	7	7
Results of (4)(c) above			6	6	5	5	5
Net Station Need			1	1	2	2	2
Negative number indicates need for stations							
Planning Area Facilities							
Name of Center	# of Stations						
DaVita Ellensburg	7						
Total	7						
Source: Northwest Renal Network / Comagine ESRD Network 16 data 2018-2023							
Most recent year-end data: 2023 posted 02/02/2024							

2024
Kittitas County
ESRD Need Projection Methodology

x	y	Linear							
2019	22	23							
2020	23	22							
2021	23	21							
2022	16	20							
2023	20	19							
2024		17.50							
2025		16.40							
2026		15.30							
2027		14.20							
2028		13.10							
SUMMARY OUTPUT									
<i>Regression Statistics</i>									
Multiple R	0.589661894								
R Square	0.347701149								
Adjusted R Square	0.130268199								
Standard Error	2.750757471								
Observations	5								
ANOVA									
	df	SS	MS	F	Significance F				
Regression	1	12.1	12.1	1.599118943	0.295337863				
Residual	3	22.7	7.566666667						
Total	4	34.8							
	Coefficients	Standard Error	t Stat	P-value	Lower 95%	Upper 95%	Lower 95.0%	Upper 95.0%	
Intercept	2243.9	1757.999394	1.276394069	0.291661226	-3350.838677	7838.638677	-3350.84	7838.639	
X Variable 1	-1.1	0.86986589	-1.264562748	0.295337863	-3.868301488	1.668301488	-3.8683	1.668301	

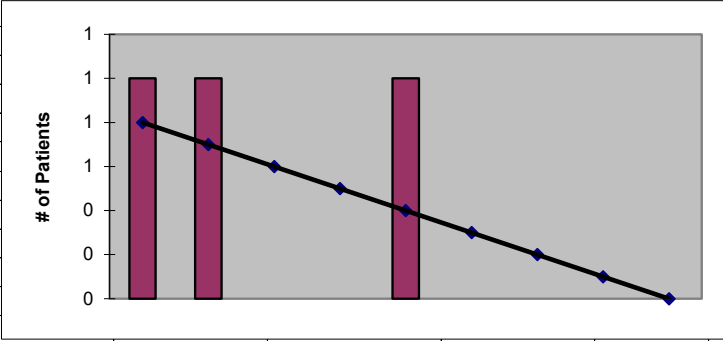


2024
Klickitat County
ESRD Need Projection Methodology

Planning Area		6 Year Utilization Data - Resident Incenter Patients					
Klickitat		2018	2019	2020	2021	2022	2023
Klickitat County		12	1	1	0	0	1
TOTALS		12	1	1	0	0	1
246-310-812(4)(a)	Rate of Change		-91.67%	0.00%	-100.00%	#DIV/0!	#DIV/0!
	6% Growth or Greater?		FALSE	FALSE	FALSE	#DIV/0!	#DIV/0!
	Regression Method:	#DIV/0!					
	Linear used						
246-310-812(4)(c)			Year 1	Year 2	Year 3	Year 4	Year 5
			2024	2025	2026	2027	2028
Projected Resident Incenter Patients	from 246-310-812(4)(b)		0.30	0.20	0.10	0.00	-0.10
Station Need for Patients	Divide Resident Incenter by 3.2		0.09	0.06	0.03	0.00	-0.03
	Rounded to next whole number		1	1	1	0	-1
246-310-812(4)(d)	subtract (4)(c) from approved stations						
Existing CN Approved Stations	Total		0	0	0	0	0
Results of (4)(c) above			1	1	1	0	-1
Net Station Need			-1	-1	-1	0	1
Negative number indicates need for stations							
Planning Area Facilities							
Name of Center	# of Stations						
None	0						
Total	0						
Source: Northwest Renal Network / Comagine ESRD Network 16 data 2018-2023							
Most recent year-end data: 2023 posted 02/02/2024							

2024
Klickitat County
ESRD Need Projection Methodology

x	y	Linear							
2019	1	1							
2020	1	1							
2021	0	1							
2022	0	1							
2023	1	0							
2024		0.30							
2025		0.20							
2026		0.10							
2027		0.00							
2028		-0.10							
SUMMARY OUTPUT									
<i>Regression Statistics</i>									
Multiple R	0.288675135								
R Square	0.083333333								
Adjusted R Square	-0.222222222								
Standard Error	0.605530071								
Observations	5								
ANOVA									
	df	SS	MS	F	Significance F				
Regression	1	0.1	0.1	0.272727273	0.637618091				
Residual	3	1.1	0.366666667						
Total	4	1.2							
	Coefficients	Standard Error	t Stat	P-value	Lower 95%	Upper 95%	Lower 95.0%	Upper 95.0%	
Intercept	202.7	386.9921317	0.523783259	0.636660962	-1028.88168	1434.28168	-1028.88	1434.282	
X Variable 1	-0.1	0.191485422	-0.522232968	0.637618091	-0.709392072	0.509392072	-0.70939	0.509392	

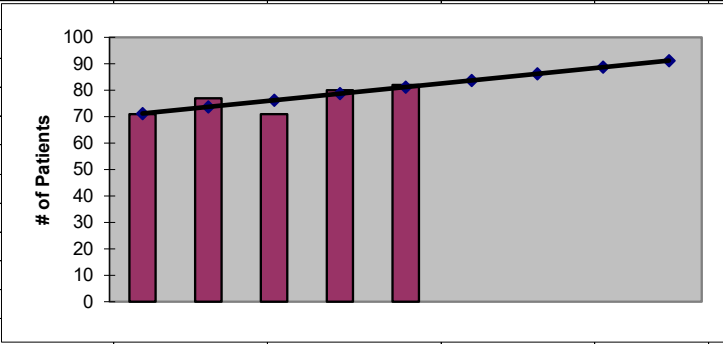


2024
Lewis County
ESRD Need Projection Methodology

Planning Area		6 Year Utilization Data - Resident Incenter Patients					
Lewis	2018	2019	2020	2021	2022	2023	
Lewis County	73	71	77	71	80	82	
TOTALS	73	71	77	71	80	82	
246-310-812(4)(a)	Rate of Change		-2.74%	8.45%	-7.79%	12.68%	2.50%
	6% Growth or Greater?		FALSE	TRUE	FALSE	TRUE	FALSE
	Regression Method:	Linear					
246-310-812(4)(c)		Year 1	Year 2	Year 3	Year 4	Year 5	
		2024	2025	2026	2027	2028	
Projected Resident Incenter Patients	from 246-310-812(4)(b)	83.70	86.20	88.70	91.20	93.70	
Station Need for Patients	Divide Resident Incenter by 4.8	17.44	17.96	18.48	19.00	19.52	
	Rounded to next whole number	18	18	19	19	20	
246-310-812(4)(d)	subtract (4)(c) from approved stations						
Existing CN Approved Stations	Total	21	21	21	21	21	
Results of (4)(c) above		18	18	19	19	20	
Net Station Need		3	3	2	2	1	
Negative number indicates need for stations							
Planning Area Facilities							
Name of Center	# of Stations						
FMC Chehalis	14						
DaVita Cooks Hill	7						
Total	21						
Source: Northwest Renal Network / Comagine ESRD Network 16 data 2018-2023							
Most recent year-end data: 2023 posted 02/02/2024							

2024
Lewis County
ESRD Need Projection Methodology

x	y	Linear							
2019	71	71							
2020	77	74							
2021	71	76							
2022	80	79							
2023	82	81							
2024		83.70							
2025		86.20							
2026		88.70							
2027		91.20							
2028		93.70							
SUMMARY OUTPUT									
<i>Regression Statistics</i>									
Multiple R	0.779728577								
R Square	0.607976654								
Adjusted R Square	0.477302205								
Standard Error	3.665151202								
Observations	5								
ANOVA									
	df	SS	MS	F	Significance F				
Regression	1	62.5	62.5	4.652605459	0.119915153				
Residual	3	40.3	13.43333333						
Total	4	102.8							
	Coefficients	Standard Error	t Stat	P-value	Lower 95%	Upper 95%	Lower 95.0%	Upper 95.0%	
Intercept	-4976.3	2342.385201	-2.124458436	0.123658625	-12430.81513	2478.215129	-12430.8	2478.215	
X Variable 1	2.5	1.159022577	2.156989907	0.119915153	-1.188527117	6.188527117	-1.18853	6.188527	

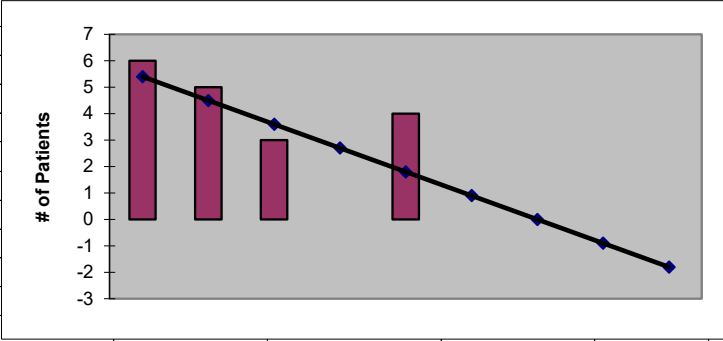


2024
Lincoln County
ESRD Need Projection Methodology

Planning Area		6 Year Utilization Data - Resident Incenter Patients					
Lincoln		2018	2019	2020	2021	2022	2023
Lincoln County		7	6	5	3	0	4
TOTALS		7	6	5	3	0	4
246-310-812(4)(a)	Rate of Change		-14.29%	-16.67%	-40.00%	-100.00%	#DIV/0!
	6% Growth or Greater?		FALSE	FALSE	FALSE	FALSE	#DIV/0!
	Regression Method:	#DIV/0!					
	Linear used						
246-310-812(4)(c)			Year 1	Year 2	Year 3	Year 4	Year 5
			2024	2025	2026	2027	2028
Projected Resident Incenter Patients	from 246-310-812(4)(b)		0.90	0.00	-0.90	-1.80	-2.70
Station Need for Patients	Divide Resident Incenter by 3.2		0.28	0.00	-0.28	-0.56	-0.84
	Rounded to next whole number		1	0	-1	-1	-1
246-310-812(4)(d)	subtract (4)(c) from approved stations						
Existing CN Approved Stations	Total		0	0	0	0	0
Results of (4)(c) above			1	0	-1	-1	-1
Net Station Need			-1	0	1	1	1
Negative number indicates need for stations							
Planning Area Facilities							
Name of Center	# of Stations						
None	0						
Total	0						
Source: Northwest Renal Network / Comagine ESRD Network 16 data 2018-2023							
Most recent year-end data: 2023 posted 02/02/2024							

**2024
Lincoln County
ESRD Need Projection Methodology**

x	y	Linear							
2019	6	5							
2020	5	5							
2021	3	4							
2022	0	3							
2023	4	2							
2024		0.90							
2025		0.00							
2026		-0.90							
2027		-1.80							
2028		-2.70							
SUMMARY OUTPUT									
<i>Regression Statistics</i>									
Multiple R	0.618122538								
R Square	0.382075472								
Adjusted R Square	0.176100629								
Standard Error	2.089657069								
Observations	5								
ANOVA									
	df	SS	MS	F	Significance F				
Regression	1	8.1	8.1	1.854961832	0.266456826				
Residual	3	13.1	4.366666667						
Total	4	21.2							
	Coefficients	Standard Error	t Stat	P-value	Lower 95%	Upper 95%	Lower 95.0%	Upper 95.0%	
Intercept	1822.5	1335.49246	1.364665137	0.265701436	-2427.633044	6072.633044	-2427.63	6072.633	
X Variable 1	-0.9	0.660807587	-1.361969835	0.266456826	-3.002984663	1.202984663	-3.00298	1.202985	

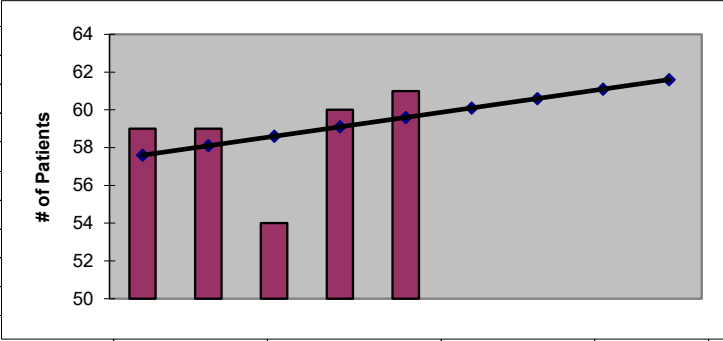


2024
Mason County
ESRD Need Projection Methodology

Planning Area		6 Year Utilization Data - Resident Incenter Patients					
Mason	2018	2019	2020	2021	2022	2023	
Mason County	52	59	59	54	60	61	
TOTALS	52	59	59	54	60	61	
246-310-812(4)(a)	Rate of Change		13.46%	0.00%	-8.47%	11.11%	1.67%
	6% Growth or Greater?		TRUE	FALSE	FALSE	TRUE	FALSE
	Regression Method:	Linear					
246-310-812(4)(c)		Year 1	Year 2	Year 3	Year 4	Year 5	
		2024	2025	2026	2027	2028	
Projected Resident Incenter Patients	from 246-310-812(4)(b)	60.10	60.60	61.10	61.60	62.10	
Station Need for Patients	Divide Resident Incenter by 4.8	12.52	12.63	12.73	12.83	12.94	
	Rounded to next whole number	13	13	13	13	13	
246-310-812(4)(d)	subtract (4)(c) from approved stations						
Existing CN Approved Stations	Total	19	19	19	19	19	
Results of (4)(c) above		13	13	13	13	13	
Net Station Need		6	6	6	6	6	
Negative number indicates need for stations							
Planning Area Facilities							
Name of Center	# of Stations						
FMC Shelton	12						
DaVita Mason County	7						
Total	19						
Source: Northwest Renal Network / Comagine ESRD Network 16 data 2018-2023							
Most recent year-end data: 2023 posted 02/02/2024							

**2024
Mason County
ESRD Need Projection Methodology-Updated**

x	y	Linear							
2019	59	58							
2020	59	58							
2021	54	59							
2022	60	59							
2023	61	60							
2024		60.10							
2025		60.60							
2026		61.10							
2027		61.60							
2028		62.10							
SUMMARY OUTPUT									
<i>Regression Statistics</i>									
Multiple R	0.292602868								
R Square	0.085616438								
Adjusted R Square	-0.219178082								
Standard Error	2.983286778								
Observations	5								
ANOVA									
	df	SS	MS	F	Significance F				
Regression	1	2.5	2.5	0.280898876	0.632833026				
Residual	3	26.7	8.9						
Total	4	29.2							
	Coefficients	Standard Error	t Stat	P-value	Lower 95%	Upper 95%	Lower 95.0%	Upper 95.0%	
Intercept	-951.9	1906.608054	-0.4992636	0.651909322	-7019.577756	5115.777756	-7019.58	5115.778	
X Variable 1	0.5	0.943398113	0.52999894	0.632833026	-2.50231384	3.50231384	-2.50231	3.502314	

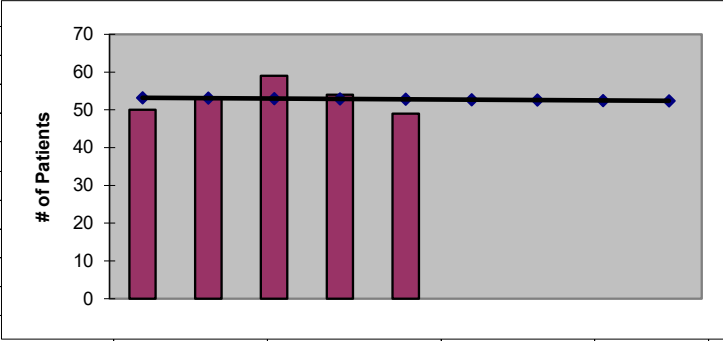


2024
Okanogan County
ESRD Need Projection Methodology

Planning Area		6 Year Utilization Data - Resident Incenter Patients					
Okanogan		2018	2019	2020	2021	2022	2023
Okanogan County		53	50	53	59	54	49
TOTALS		53	50	53	59	54	49
246-310-812(4)(a)	Rate of Change		-5.66%	6.00%	11.32%	-8.47%	-9.26%
	6% Growth or Greater?		FALSE	TRUE	TRUE	FALSE	FALSE
	Regression Method:	Linear					
246-310-812(4)(c)			Year 1	Year 2	Year 3	Year 4	Year 5
			2024	2025	2026	2027	2028
Projected Resident Incenter Patients	from 246-310-812(4)(b)		52.70	52.60	52.50	52.40	52.30
Station Need for Patients	Divide Resident Incenter by 3.2		16.47	16.44	16.41	16.38	16.34
	Rounded to next whole number		17	17	17	17	17
246-310-812(4)(d)	subtract (4)(c) from approved stations						
Existing CN Approved Stations	Total		17	17	17	17	17
Results of (4)(c) above			17	17	17	17	17
Net Station Need			0	0	0	0	0
Negative number indicates need for stations							
Planning Area Facilities							
Name of Center	# of Stations						
FMC Omak	17						
Total	17						
Source: Northwest Renal Network / Comagine ESRD Network 16 data 2018-2023							
Most recent year-end data: 2023 posted 02/02/2024							

2024
Okanogan County
ESRD Need Projection Methodology

x	y	Linear							
2019	50	53							
2020	53	53							
2021	59	53							
2022	54	53							
2023	49	53							
2024		52.70							
2025		52.60							
2026		52.50							
2027		52.40							
2028		52.30							
SUMMARY OUTPUT									
<i>Regression Statistics</i>									
Multiple R	0.040160966								
R Square	0.001612903								
Adjusted R Square	-0.331182796								
Standard Error	4.542392908								
Observations	5								
ANOVA									
	df	SS	MS	F	Significance F				
Regression	1	0.1	0.1	0.004846527	0.948879219				
Residual	3	61.9	20.63333333						
Total	4	62							
	Coefficients	Standard Error	t Stat	P-value	Lower 95%	Upper 95%	Lower 95.0%	Upper 95.0%	
Intercept	255.1	2903.02728	0.087873787	0.935514112	-8983.628442	9493.828442	-8983.63	9493.828	
X Variable 1	-0.1	1.436430762	-0.069617	0.948879219	-4.671363771	4.471363771	-4.67136	4.471364	

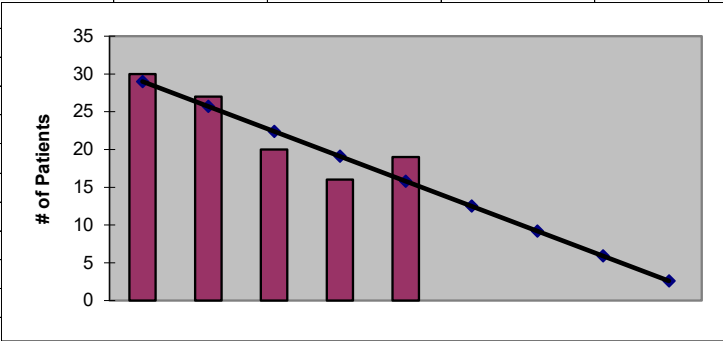


**2024
Pacific County
ESRD Need Projection Methodology**

Planning Area		6 Year Utilization Data - Resident Incenter Patients					
Pacific		2018	2019	2020	2021	2022	2023
Pacific County		28	30	27	20	16	19
TOTALS		28	30	27	20	16	19
246-310-812(4)(a)	Rate of Change		7.14%	-10.00%	-25.93%	-20.00%	18.75%
	6% Growth or Greater?		TRUE	FALSE	FALSE	FALSE	TRUE
	Regression Method:	Linear					
246-310-812(4)(c)			Year 1	Year 2	Year 3	Year 4	Year 5
			2024	2025	2026	2027	2028
Projected Resident Incenter Patients	from 246-310-812(4)(b)		12.50	9.20	5.90	2.60	-0.70
Station Need for Patients	Divide Resident Incenter by 3.2		3.91	2.87	1.84	0.81	-0.22
	Rounded to next whole number		4	3	2	1	-1
246-310-812(4)(d)	subtract (4)(c) from approved stations						
Existing CN Approved Stations	Total		10	10	10	10	10
Results of (4)(c) above			4	3	2	1	-1
Net Station Need			6	7	8	9	11
Negative number indicates need for stations							
Planning Area Facilities							
Name of Center	# of Stations						
DaVita Seaview	10						
Total	10						
Source: Northwest Renal Network / Comagine ESRD Network 16 data 2018-2023							
Most recent year-end data: 2023 posted 02/02/2024							

**2024
Pacific County
ESRD Need Projection Methodology**

x	y	Linear						
2019	30	29						
2020	27	26						
2021	20	22						
2022	16	19						
2023	19	16						
2024		12.50						
2025		9.20						
2026		5.90						
2027		2.60						
2028		-0.70						
SUMMARY OUTPUT								
<i>Regression Statistics</i>								
Multiple R	0.890916258							
R Square	0.793731778							
Adjusted R Square	0.724975705							
Standard Error	3.0713732							
Observations	5							
ANOVA								
	df	SS	MS	F	Significance F			
Regression	1	108.9	108.9	11.54416961	0.04253408			
Residual	3	28.3	9.433333333					
Total	4	137.2						
	Coefficients	Standard Error	t Stat	P-value	Lower 95%	Upper 95%	Lower 95.0%	Upper 95.0%
Intercept	6691.7	1962.903775	3.409082037	0.042179087	444.8641336	12938.53587	444.8641	12938.54
X Variable 1	-3.3	0.971253486	-3.397671204	0.04253408	-6.390962067	-0.20903793	-6.39096	-0.20904

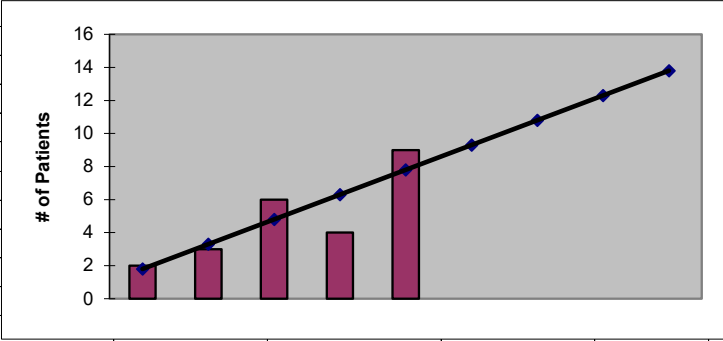


2024
Pend Orielle County
ESRD Need Projection Methodology

Planning Area		6 Year Utilization Data - Resident Incenter Patients					
Pend Orielle		2018	2019	2020	2021	2022	2023
Pend Orielle County		9	7	7	10	9	11
Less 99009 to Spokane 2		-6	-5	-4	-4	-5	-2
TOTALS		3	2	3	6	4	9
246-310-812(4)(a)	Rate of Change		-33.33%	50.00%	100.00%	-33.33%	125.00%
	6% Growth or Greater?		FALSE	TRUE	TRUE	FALSE	TRUE
	Regression Method:	Linear					
246-310-812(4)(c)			Year 1	Year 2	Year 3	Year 4	Year 5
			2024	2025	2026	2027	2028
Projected Resident Incenter Patients	from 246-310-812(4)(b)		9.30	10.80	12.30	13.80	15.30
Station Need for Patients	Divide Resident Incenter by 3.2		2.91	3.38	3.84	4.31	4.78
	Rounded to next whole number		3	4	4	5	5
246-310-812(4)(d)	subtract (4)(c) from approved stations						
Existing CN Approved Stations	Total		0	0	0	0	0
Results of (4)(c) above			3	4	4	5	5
Net Station Need			-3	-4	-4	-5	-5
Negative number indicates need for stations							
Planning Area Facilities							
Name of Center	# of Stations						
None	0						
Total	0						
Source: Northwest Renal Network / Comagine ESRD Network 16 data 2018-2023							
Most recent year-end data: 2023 posted 02/02/2024							

2024
Pend Oreille County
ESRD Need Projection Methodology

x	y	Linear							
2019	2	2							
2020	3	3							
2021	6	5							
2022	4	6							
2023	9	8							
2024		9.30							
2025		10.80							
2026		12.30							
2027		13.80							
2028		15.30							
SUMMARY OUTPUT									
<i>Regression Statistics</i>									
Multiple R	0.854704323								
R Square	0.730519481								
Adjusted R Square	0.640692641								
Standard Error	1.663329993								
Observations	5								
ANOVA									
	df	SS	MS	F	Significance F				
Regression	1	22.5	22.5	8.13253012	0.06501504				
Residual	3	8.3	2.766666667						
Total	4	30.8							
	Coefficients	Standard Error	t Stat	P-value	Lower 95%	Upper 95%	Lower 95.0%	Upper 95.0%	
Intercept	-3026.7	1063.02833	-2.847243027	0.065256682	-6409.730581	356.3305806	-6409.73	356.3306	
X Variable 1	1.5	0.525991128	2.851759127	0.06501504	-0.173938522	3.173938522	-0.17394	3.173939	

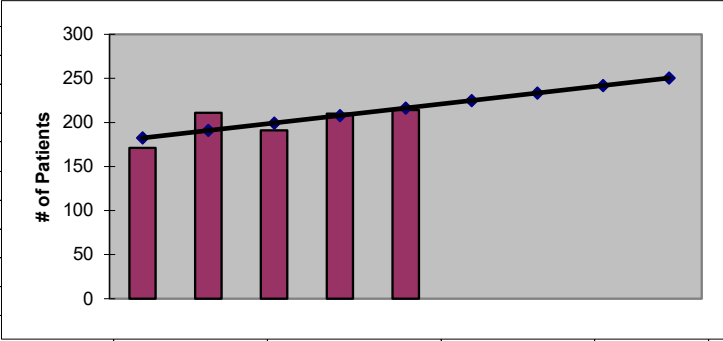


2024
Pierce County 1
ESRD Need Projection Methodology

Planning Area		6 Year Utilization Data - Resident Incenter Patients					
Pierce 1		2018	2019	2020	2021	2022	2023
	98354	13	13	14	9	9	8
	98371	19	18	24	20	20	22
	98372	23	15	16	21	23	22
	98373	22	24	31	28	35	33
	98374	31	34	44	40	50	51
	98375	21	28	30	24	24	31
	98390	7	6	11	11	9	7
	98391	25	33	41	38	40	40
	TOTALS	161	171	211	191	210	214
246-310-812(4)(a)	Rate of Change		6.21%	23.39%	-9.48%	9.95%	1.90%
	6% Growth or Greater?		TRUE	TRUE	FALSE	TRUE	FALSE
	Regression Method:	Linear					
246-310-812(4)(c)			Year 1	Year 2	Year 3	Year 4	Year 5
			2024	2025	2026	2027	2028
Projected Resident Incenter Patients	from 246-310-812(4)(b)		224.90	233.40	241.90	250.40	258.90
Station Need for Patients	Divide Resident Incenter by 4.8		46.85	48.63	50.40	52.17	53.94
	Rounded to next whole number		47	49	51	53	54
246-310-812(4)(d)	subtract (4)(c) from approved stations						
Existing CN Approved Stations	Total		45	45	45	45	45
Results of (4)(c) above			47	49	51	53	54
Net Station Need			-2	-4	-6	-8	-9
Negative number indicates need for stations							
Planning Area Facilities							
Name of Center	# of Stations						
FKC Puyallup	14						
DaVita Sumner	9						
DaVita Puyallup	19						
Franciscan Bonney Lake	3						
Total	45						
Source: Northwest Renal Network / Comagine ESRD Network 16 data 2018-2023							
Most recent year-end data: 2023 posted 02/02/2024							

2024
Pierce County 1
ESRD Need Projection Methodology

x	y	Linear							
2019	171	182							
2020	211	191							
2021	191	199							
2022	210	208							
2023	214	216							
2024		224.90							
2025		233.40							
2026		241.90							
2027		250.40							
2028		258.90							
SUMMARY OUTPUT									
<i>Regression Statistics</i>									
Multiple R	0.735056533								
R Square	0.540308106								
Adjusted R Square	0.387077475								
Standard Error	14.31432849								
Observations	5								
ANOVA									
	df	SS	MS	F	Significance F				
Regression	1	722.5	722.5	3.526110298	0.15703733				
Residual	3	614.7	204.9						
Total	4	1337.2							
	Coefficients	Standard Error	t Stat	P-value	Lower 95%	Upper 95%	Lower 95.0%	Upper 95.0%	
Intercept	-16979.1	9148.236828	-1.855996988	0.160466118	-46092.87249	12134.67249	-46092.9	12134.67	
X Variable 1	8.5	4.526588119	1.877793998	0.15703733	-5.905623635	22.90562364	-5.90562	22.90562	

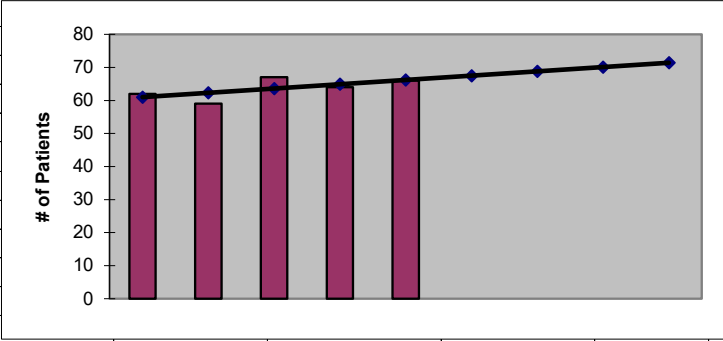


2024
Pierce County 2
ESRD Need Projection Methodology

Planning Area		6 Year Utilization Data - Resident Incenter Patients					
Pierce 2	2018	2019	2020	2021	2022	2023	
98304	0	0	0	0	0	0	
98321	10	11	13	9	9	13	
98323	0	0	0	0	0	2	
98328	7	6	6	6	7	8	
98330	0	0	1	1	0	0	
98338	33	31	27	37	34	36	
98360	8	14	12	14	14	7	
TOTALS	58	62	59	67	64	66	
246-310-812(4)(a)	Rate of Change		6.90%	-4.84%	13.56%	-4.48%	3.13%
	6% Growth or Greater?		TRUE	FALSE	TRUE	FALSE	FALSE
	Regression Method:	Linear					
246-310-812(4)(c)		Year 1	Year 2	Year 3	Year 4	Year 5	
		2024	2025	2026	2027	2028	
Projected Resident Incenter Patients	from 246-310-812(4)(b)	67.50	68.80	70.10	71.40	72.70	
Station Need for Patients	Divide Resident Incenter by 4.8	14.06	14.33	14.60	14.87	15.15	
	Rounded to next whole number	15	15	15	15	16	
246-310-812(4)(d)	subtract (4)(c) from approved stations						
Existing CN Approved Stations	Total	21	21	21	21	21	
Results of (4)(c) above		15	15	15	15	16	
Net Station Need		6	6	6	6	5	
Negative number indicates need for stations							
Planning Area Facilities							
Name of Center	# of Stations						
DaVita Graham	21						
Total	21						
Source: Northwest Renal Network / Comagine ESRD Network 16 data 2018-2023							
Most recent year-end data: 2023 posted 02/02/2024							

2024
Pierce County 2
ESRD Need Projection Methodology

x	y	Linear							
2019	62	61							
2020	59	62							
2021	67	64							
2022	64	65							
2023	66	66							
2024		67.50							
2025		68.80							
2026		70.10							
2027		71.40							
2028		72.70							
SUMMARY OUTPUT									
<i>Regression Statistics</i>									
Multiple R	0.640464031								
R Square	0.410194175								
Adjusted R Square	0.213592233								
Standard Error	2.846049894								
Observations	5								
ANOVA									
	df	SS	MS	F	Significance F				
Regression	1	16.9	16.9	2.086419753	0.244350711				
Residual	3	24.3	8.1						
Total	4	41.2							
	Coefficients	Standard Error	t Stat	P-value	Lower 95%	Upper 95%	Lower 95.0%	Upper 95.0%	
Intercept	-2563.7	1818.900445	-1.409477911	0.253472092	-8352.253002	3224.853002	-8352.25	3224.853	
X Variable 1	1.3	0.9	1.444444444	0.244350711	-1.564201675	4.164201675	-1.5642	4.164202	

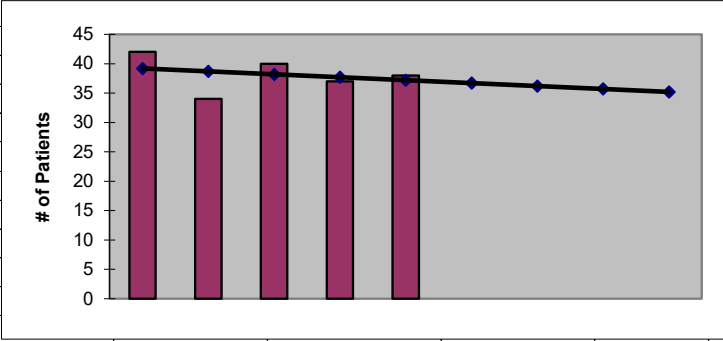


2024
Pierce County 3
ESRD Need Projection Methodology

Planning Area		6 Year Utilization Data - Resident Incenter Patients					
Pierce 3		2018	2019	2020	2021	2022	2023
	98329	9	7	3	5	4	2
	98332	12	12	6	9	12	12
	98333	2	2	1	2	1	1
	98335	13	14	17	19	16	19
	98349	6	5	5	3	3	3
	98351	1	1	1	2	1	1
	98394	1	1	1	0	0	0
	TOTALS	44	42	34	40	37	38
246-310-812(4)(a)	Rate of Change		-4.55%	-19.05%	17.65%	-7.50%	2.70%
	6% Growth or Greater?		FALSE	FALSE	TRUE	FALSE	FALSE
	Regression Method:	Linear					
246-310-812(4)(c)			Year 1	Year 2	Year 3	Year 4	Year 5
			2024	2025	2026	2027	2028
Projected Resident Incenter Patients	from 246-310-812(4)(b)		36.70	36.20	35.70	35.20	34.70
Station Need for Patients	Divide Resident Incenter by 4.8		7.65	7.54	7.44	7.33	7.23
	Rounded to next whole number		8	8	8	8	8
246-310-812(4)(d)	subtract (4)(c) from approved stations						
Existing CN Approved Stations	Total		14	14	14	14	14
Results of (4)(c) above			8	8	8	8	8
Net Station Need			6	6	6	6	6
Negative number indicates need for stations							
Planning Area Facilities							
Name of Center	# of Stations						
FKC Gig Harbor	14						
Total	14						
Source: Northwest Renal Network / Comagine ESRD Network 16 data 2018-2023							
Most recent year-end data: 2023 posted 02/02/2024							

**2024
Pierce County 3
ESRD Need Projection Methodology**

x	y	Linear							
2019	42	39							
2020	34	39							
2021	40	38							
2022	37	38							
2023	38	37							
2024		36.70							
2025		36.20							
2026		35.70							
2027		35.20							
2028		34.70							
SUMMARY OUTPUT									
<i>Regression Statistics</i>									
Multiple R	0.260643018								
R Square	0.067934783								
Adjusted R Square	-0.242753623								
Standard Error	3.381321241								
Observations	5								
ANOVA									
	df	SS	MS	F	Significance F				
Regression	1	2.5	2.5	0.218658892	0.671935738				
Residual	3	34.3	11.43333333						
Total	4	36.8							
	Coefficients	Standard Error	t Stat	P-value	Lower 95%	Upper 95%	Lower 95.0%	Upper 95.0%	
Intercept	1048.7	2160.990474	0.48528673	0.660705294	-5828.536151	7925.936151	-5828.54	7925.936	
X Variable 1	-0.5	1.069267662	-0.467609765	0.671935738	-3.902886921	2.902886921	-3.90289	2.902887	

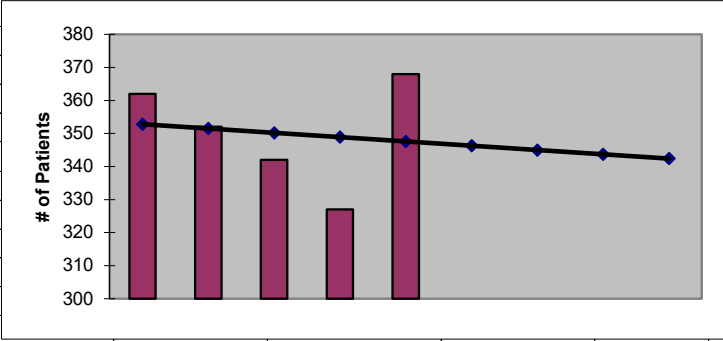


2024
Pierce County 4
ESRD Need Projection Methodology

Planning Area		6 Year Utilization Data - Resident Incenter Patients					
Pierce 4		2018	2019	2020	2021	2022	2023
98402		11	8	16	13	15	17
98403		6	9	11	7	10	8
98404		82	81	77	74	64	82
98405		50	45	42	49	43	46
98406		12	13	17	15	18	23
98407		14	13	17	14	17	15
98408		34	44	39	36	25	39
98409		46	47	41	48	54	47
98416		0	0	0	0	0	0
98418		23	20	12	14	13	15
98421		2	1	1	1	1	0
98422		18	18	15	11	19	21
98424		9	16	16	18	14	17
98443		7	9	11	11	8	8
98465		11	12	13	14	8	12
98466		26	26	24	17	18	18
TOTALS		351	362	352	342	327	368
246-310-812(4)(a)	Rate of Change		3.13%	-2.76%	-2.84%	-4.39%	12.54%
	6% Growth or Greater?		FALSE	FALSE	FALSE	FALSE	TRUE
	Regression Method:	Linear					
246-310-812(4)(c)			Year 1 2024	Year 2 2025	Year 3 2026	Year 4 2027	Year 5 2028
Projected Resident Incenter Patients	from 246-310-812(4)(b)		346.30	345.00	343.70	342.40	341.10
Station Need for Patients	Divide Resident Incenter by 4.8		72.15	71.88	71.60	71.33	71.06
	Rounded to next whole number		73	72	72	72	72
246-310-812(4)(d)	subtract (4)(c) from approved stations						
Existing CN Approved Stations	Total		92	92	92	92	92
Results of (4)(c) above			73	72	72	72	72
Net Station Need			19	20	20	20	20
Negative number indicates need for stations							
Planning Area Facilities							
Name of Center	# of Stations						
DaVita - Tacoma	20						
FKC East Tacoma	16						
FKC South Tacoma	24						
FKC Mount Rainier	22						
NKC Fife Kidney Center	10						
Total	92						
Source: Northwest Renal Network / Comagine ESRD Network 16 data 2018-2023							
Most recent year-end data: 2023 posted 02/02/2024							

2024
Pierce County 4
ESRD Need Projection Methodology

x	y	Linear							
2019	362	353							
2020	352	352							
2021	342	350							
2022	327	349							
2023	368	348							
2024		346.30							
2025		345.00							
2026		343.70							
2027		342.40							
2028		341.10							
SUMMARY OUTPUT									
<i>Regression Statistics</i>									
Multiple R	0.125982241								
R Square	0.015871525								
Adjusted R Square	-0.3121713								
Standard Error	18.68956928								
Observations	5								
ANOVA									
	df	SS	MS	F	Significance F				
Regression	1	16.9	16.9	0.048382479	0.840019758				
Residual	3	1047.9	349.3						
Total	4	1064.8							
	Coefficients	Standard Error	t Stat	P-value	Lower 95%	Upper 95%	Lower 95.0%	Upper 95.0%	
Intercept	2977.5	11944.43778	0.249279209	0.819237733	-35035.0319	40990.0319	-35035	40990.03	
X Variable 1	-1.3	5.910160742	-0.219960176	0.840019758	-20.10876922	17.50876922	-20.1088	17.50877	

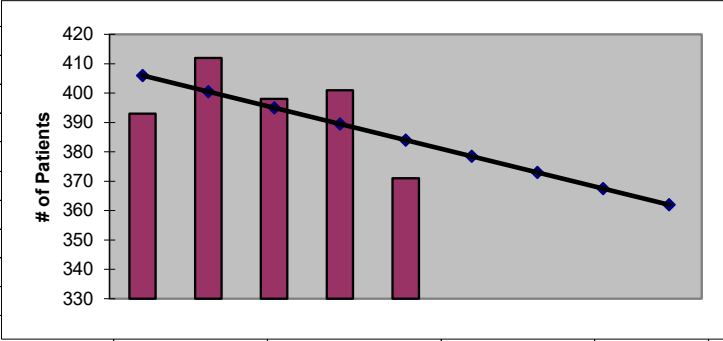


2024
Pierce County 5
ESRD Need Projection Methodology

Planning Area		6 Year Utilization Data - Resident Incenter Patients					
Pierce 5		2018	2019	2020	2021	2022	2023
98303		1	0	0	0	0	0
98327		4	5	6	7	7	4
98387		74	92	95	90	98	94
98388		8	7	6	8	9	8
98430		0	0	0	0	0	0
98433		1	2	5	1	2	3
98438		0	0	0	0	1	0
98439		5	4	6	9	9	8
98444		75	81	87	78	68	63
98445		54	55	55	50	47	50
98446		15	12	11	10	15	16
98447		0	0	0	0	0	0
98467		10	13	18	19	20	16
98498		48	49	47	46	48	42
98499		71	65	67	67	70	61
98580		6	8	9	13	7	6
TOTALS		372	393	412	398	401	371
246-310-812(4)(a)	Rate of Change		5.65%	4.83%	-3.40%	0.75%	-7.48%
	6% Growth or Greater?		FALSE	FALSE	FALSE	FALSE	FALSE
	Regression Method:	Linear					
246-310-812(4)(c)			Year 1	Year 2	Year 3	Year 4	Year 5
			2024	2025	2026	2027	2028
Projected Resident Incenter Patients	from 246-310-812(4)(b)		378.50	373.00	367.50	362.00	356.50
Station Need for Patients	Divide Resident Incenter by 4.8		78.85	77.71	76.56	75.42	74.27
	Rounded to next whole number		79	78	77	76	75
246-310-812(4)(d)	subtract (4)(c) from approved stations						
Existing CN Approved Stations	Total		98	98	98	98	98
Results of (4)(c) above			79	78	77	76	75
Net Station Need			19	20	21	22	23
Negative number indicates need for stations							
Planning Area Facilities							
Name of Center	# of Stations						
DaVita Lakewood Comm	26						
DaVita Parkland	21						
PSKC Lakewood	29						
DaVita Rainier View	22						
Total	98						
Source: Northwest Renal Network / Comagine ESRD Network 16 data 2018-2023							
Most recent year-end data: 2023 posted 02/02/2024							

**2024
Pierce County 5
ESRD Need Projection Methodology**

x	y	Linear							
2019	393	406							
2020	412	401							
2021	398	395							
2022	401	390							
2023	371	384							
2024		378.50							
2025		373.00							
2026		367.50							
2027		362.00							
2028		356.50							
SUMMARY OUTPUT									
<i>Regression Statistics</i>									
Multiple R	0.575293665								
R Square	0.330962801								
Adjusted R Square	0.107950401								
Standard Error	14.27702116								
Observations	5								
ANOVA									
	df	SS	MS	F	Significance F				
Regression	1	302.5	302.5	1.484055601	0.310207947				
Residual	3	611.5	203.8333333						
Total	4	914							
	Coefficients	Standard Error	t Stat	P-value	Lower 95%	Upper 95%	Lower 95.0%	Upper 95.0%	
Intercept	11510.5	9124.393851	1.261508456	0.296294799	-17527.3935	40548.3935	-17527.4	40548.39	
X Variable 1	-5.5	4.514790508	-1.218218207	0.310207947	-19.86807837	8.868078372	-19.8681	8.868078	

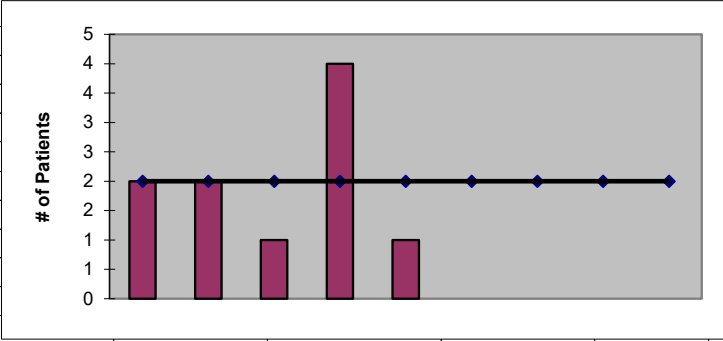


2024
San Juan County
ESRD Need Projection Methodology

Planning Area		6 Year Utilization Data - Resident Incenter Patients					
San Juan	2018	2019	2020	2021	2022	2023	
San Juan County	2	2	2	1	4	1	
TOTALS	2	2	2	1	4	1	
246-310-812(4)(a)	Rate of Change		0.00%	0.00%	-50.00%	300.00%	-75.00%
	6% Growth or Greater?		FALSE	FALSE	FALSE	TRUE	FALSE
	Regression Method:	Linear					
246-310-812(4)(c)			Year 1	Year 2	Year 3	Year 4	Year 5
			2024	2025	2026	2027	2028
Projected Resident Incenter Patients	from 246-310-812(4)(b)		2.00	2.00	2.00	2.00	2.00
Station Need for Patients	Divide Resident Incenter by 3.2		0.63	0.63	0.63	0.63	0.63
	Rounded to next whole number		1	1	1	1	1
246-310-812(4)(d)	subtract (4)(c) from approved stations						
Existing CN Approved Stations	Total		0	0	0	0	0
Results of (4)(c) above			1	1	1	1	1
Net Station Need			-1	-1	-1	-1	-1
Negative number indicates need for stations							
Planning Area Facilities							
Name of Center	# of Stations						
None	0						
Total	0						
Source: Northwest Renal Network / Comagine ESRD Network 16 data 2018-2023							
Most recent year-end data: 2023 posted 02/02/2024							

2024
San Juan County
ESRD Need Projection Methodology

x	y	Linear							
2019	2	2							
2020	2	2							
2021	1	2							
2022	4	2							
2023	1	2							
2024		2.00							
2025		2.00							
2026		2.00							
2027		2.00							
2028		2.00							
SUMMARY OUTPUT									
<i>Regression Statistics</i>									
Multiple R		0							
R Square		0							
Adjusted R Square	-0.333333333								
Standard Error	1.414213562								
Observations	5								
ANOVA									
	df	SS	MS	F	Significance F				
Regression	1	0	0	0	1				
Residual	3	6	2						
Total	4	6							
	Coefficients	Standard Error	t Stat	P-value	Lower 95%	Upper 95%	Lower 95.0%	Upper 95.0%	
Intercept	2	903.8188978	0.002212833	0.998373337	-2874.355112	2878.355112	-2874.36	2878.355	
X Variable 1	0	0.447213595	0	1	-1.423233255	1.423233255	-1.42323	1.423233	

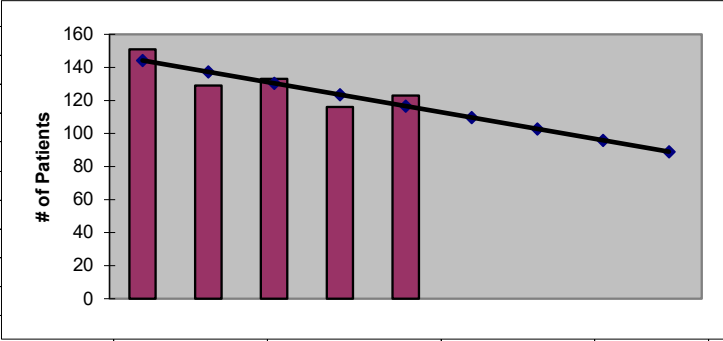


2024
Skagit County
ESRD Need Projection Methodology

Planning Area		6 Year Utilization Data - Resident Incenter Patients					
Skagit		2018	2019	2020	2021	2022	2023
Skagit County		137	151	129	133	116	123
TOTALS		137	151	129	133	116	123
246-310-812(4)(a)	Rate of Change		10.22%	-14.57%	3.10%	-12.78%	6.03%
	6% Growth or Greater?		TRUE	FALSE	FALSE	FALSE	TRUE
	Regression Method:	Linear					
246-310-812(4)(c)			Year 1	Year 2	Year 3	Year 4	Year 5
			2024	2025	2026	2027	2028
Projected Resident Incenter Patients	from 246-310-812(4)(b)		109.70	102.80	95.90	89.00	82.10
Station Need for Patients	Divide Resident Incenter by 4.8		22.85	21.42	19.98	18.54	17.10
	Rounded to next whole number		23	22	20	19	18
246-310-812(4)(d)	subtract (4)(c) from approved stations						
Existing CN Approved Stations	Total		39	39	39	39	39
Results of (4)(c) above			23	22	20	19	18
Net Station Need			16	17	19	20	21
Negative number indicates need for stations							
Planning Area Facilities							
Name of Center	# of Stations						
FMC Skagit Valley	27						
PSKC-Anacortes	6						
DaVita Cascade	6						
Total	39						
Source: Northwest Renal Network / Comagine ESRD Network 16 data 2018-2023							
Most recent year-end data: 2023 posted 02/02/2024							

2024
Skagit County
ESRD Need Projection Methodology

x	y	Linear							
2019	151	144							
2020	129	137							
2021	133	130							
2022	116	124							
2023	123	117							
2024		109.70							
2025		102.80							
2026		95.90							
2027		89.00							
2028		82.10							
SUMMARY OUTPUT									
<i>Regression Statistics</i>									
Multiple R	0.827549935								
R Square	0.684838895								
Adjusted R Square	0.579785194								
Standard Error	8.545954208								
Observations	5								
ANOVA									
	<i>df</i>	<i>SS</i>	<i>MS</i>	<i>F</i>	<i>Significance F</i>				
Regression	1	476.1	476.1	6.518941123	0.083707253				
Residual	3	219.1	73.03333333						
Total	4	695.2							
	<i>Coefficients</i>	<i>Standard Error</i>	<i>t Stat</i>	<i>P-value</i>	<i>Lower 95%</i>	<i>Upper 95%</i>	<i>Lower 95.0%</i>	<i>Upper 95.0%</i>	
Intercept	14075.3	5461.689181	2.577096487	0.081986138	-3306.232555	31456.83255	-3306.23	31456.83	
X Variable 1	-6.9	2.702468008	-2.553221714	0.083707253	-15.50045933	1.700459327	-15.5005	1.700459	

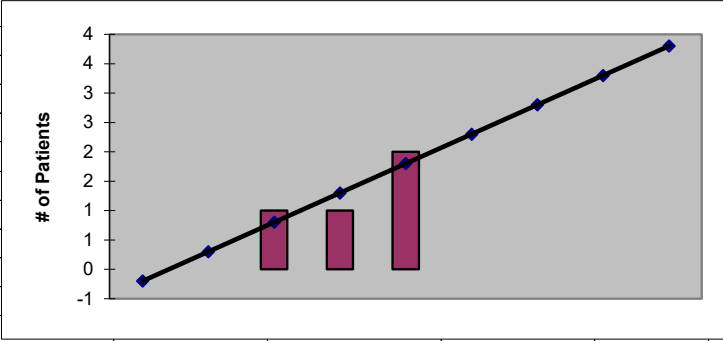


2024
Skamania County
ESRD Need Projection Methodology

Planning Area		6 Year Utilization Data - Resident Incenter Patients					
Skamania	2018	2019	2020	2021	2022	2023	
Skamania County	5	0	0	1	1	2	
TOTALS	5	0	0	1	1	2	
246-310-812(4)(a)	Rate of Change		-100.00%	#DIV/0!	#DIV/0!	0.00%	100.00%
	6% Growth or Greater?		FALSE	#DIV/0!	#DIV/0!	FALSE	TRUE
	Regression Method:	#DIV/0!					
	Linear used						
246-310-812(4)(c)		Year 1	Year 2	Year 3	Year 4	Year 5	
		2024	2025	2026	2027	2028	
Projected Resident Incenter Patients	from 246-310-812(4)(b)	2.30	2.80	3.30	3.80	4.30	
Station Need for Patients	Divide Resident Incenter by 3.2	0.72	0.87	1.03	1.19	1.34	
	Rounded to next whole number	1	1	2	2	2	
246-310-812(4)(d)	subtract (4)(c) from approved stations						
Existing CN Approved Stations	Total	0	0	0	0	0	
Results of (4)(c) above		1	1	2	2	2	
Net Station Need		-1	-1	-2	-2	-2	
Negative number indicates need for stations							
Planning Area Facilities							
Name of Center	# of Stations						
None	0						
Total	0						
Source: Northwest Renal Network / Comagine ESRD Network 16 data 2018-2023							
Most recent year-end data: 2023 posted 02/02/2024							

2024
Skamania County
ESRD Need Projection Methodology

x	y	Linear							
2019	0	0							
2020	0	0							
2021	1	1							
2022	1	1							
2023	2	2							
2024		2.30							
2025		2.80							
2026		3.30							
2027		3.80							
2028		4.30							
SUMMARY OUTPUT									
<i>Regression Statistics</i>									
Multiple R	0.944911183								
R Square	0.892857143								
Adjusted R Square	0.857142857								
Standard Error	0.316227766								
Observations	5								
ANOVA									
	df	SS	MS	F	Significance F				
Regression	1	2.5	2.5	25	0.015392438				
Residual	3	0.3	0.1						
Total	4	2.8							
	Coefficients	Standard Error	t Stat	P-value	Lower 95%	Upper 95%	Lower 95.0%	Upper 95.0%	
Intercept	-1009.7	202.1000495	-4.99604034	0.0154259	-1652.872556	-366.527444	-1652.87	-366.527	
X Variable 1	0.5	0.1	5	0.015392438	0.181755369	0.818244631	0.181755	0.818245	

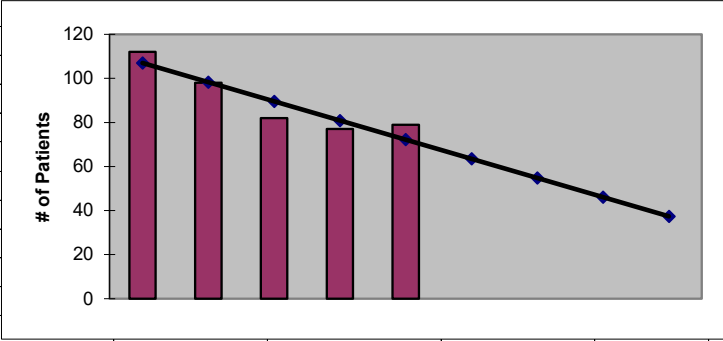


2024
Snohomish County 1
ESRD Need Projection Methodology

Planning Area		6 Year Utilization Data - Resident Incenter Patients					
Snohomish 1		2018	2019	2020	2021	2022	2023
	98223	39	39	32	17	19	21
	98241	3	3	4	2	3	3
	98252	4	2	5	5	6	7
	98271	53	44	39	40	34	33
	98282	8	8	5	4	5	5
	98292	14	16	13	14	10	10
TOTALS		121	112	98	82	77	79
246-310-812(4)(a)	Rate of Change		-7.44%	-12.50%	-16.33%	-6.10%	2.60%
	6% Growth or Greater?		FALSE	FALSE	FALSE	FALSE	FALSE
	Regression Method:	Linear					
246-310-812(4)(c)			Year 1 2024	Year 2 2025	Year 3 2026	Year 4 2027	Year 5 2028
Projected Resident Incenter Patients	from 246-310-812(4)(b)		63.50	54.80	46.10	37.40	28.70
Station Need for Patients	Divide Resident Incenter by 4.8		13.23	11.42	9.60	7.79	5.98
	Rounded to next whole number		14	12	10	8	6
246-310-812(4)(d)	subtract (4)(c) from approved stations						
Existing CN Approved Stations	Total		38	38	38	38	38
Results of (4)(c) above			14	12	10	8	6
Net Station Need			24	26	28	30	32
Negative number indicates need for stations							
Planning Area Facilities							
Name of Center	# of Stations						
PSKC Smokey Point	28						
PSKC Arlington	10						
Total	38						
Source: Northwest Renal Network / Comagine ESRD Network 16 data 2018-2023							
Most recent year-end data: 2023 posted 02/02/2024							

2024
Snohomish County 1
ESRD Need Projection Methodology

x	y	Linear							
2019	112	107							
2020	98	98							
2021	82	90							
2022	77	81							
2023	79	72							
2024		63.50							
2025		54.80							
2026		46.10							
2027		37.40							
2028		28.70							
SUMMARY OUTPUT									
<i>Regression Statistics</i>									
Multiple R	0.916449758								
R Square	0.83988016								
Adjusted R Square	0.78650688								
Standard Error	6.935416354								
Observations	5								
ANOVA									
	df	SS	MS	F	Significance F				
Regression	1	756.9	756.9	15.73596674	0.028624401				
Residual	3	144.3	48.1						
Total	4	901.2							
	Coefficients	Standard Error	t Stat	P-value	Lower 95%	Upper 95%	Lower 95.0%	Upper 95.0%	
Intercept	17672.3	4432.400121	3.987072358	0.028246673	3566.424612	31778.17539	3566.425	31778.18	
X Variable 1	-8.7	2.19317122	-3.966858548	0.028624401	-15.67964965	-1.72035035	-15.6796	-1.72035	



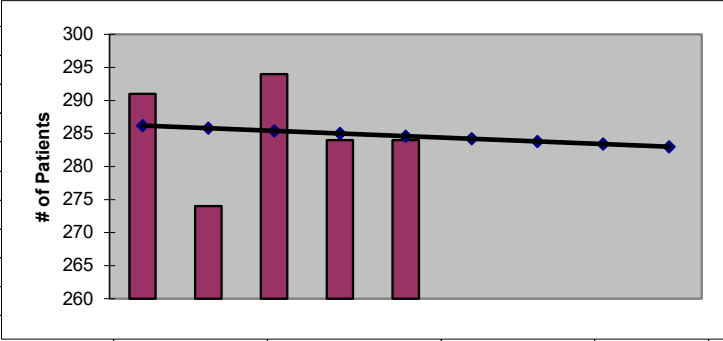


2024
Snohomish County 2
ESRD Need Projection Methodology

Planning Area		6 Year Utilization Data - Resident Incenter Patients					
Snohomish 2		2018	2019	2020	2021	2022	2023
98201		36	38	30	33	36	38
98203		28	30	31	36	27	32
98204		40	46	40	44	37	40
98205		0	0	0	0	0	0
98208		50	47	39	44	45	42
98224		0	0	0	0	0	0
98251		2	0	3	2	2	4
98258		22	24	24	26	22	19
98270		54	53	56	54	59	56
98272		31	23	23	16	17	15
98275		7	7	11	14	14	10
98288		0	0	0	0	0	0
98290		15	16	10	19	19	23
98294		6	7	7	6	6	5
TOTALS		291	291	274	294	284	284
246-310-812(4)(a)	Rate of Change		0.00%	-5.84%	7.30%	-3.40%	0.00%
	6% Growth or Greater?		FALSE	FALSE	TRUE	FALSE	FALSE
	Regression Method:	Linear					
246-310-812(4)(c)			Year 1	Year 2	Year 3	Year 4	Year 5
			2024	2025	2026	2027	2028
Projected Resident Incenter Patients	from 246-310-812(4)(b)		284.20	283.80	283.40	283.00	282.60
Station Need for Patients	Divide Resident Incenter by 4.8		59.21	59.13	59.04	58.96	58.88
	Rounded to next whole number		60	60	60	59	59
246-310-812(4)(d)	subtract (4)(c) from approved stations						
Existing CN Approved Stations	Total		72	72	72	72	72
Results of (4)(c) above			60	60	60	59	59
Net Station Need			12	12	12	13	13
Negative number indicates need for stations							
Planning Area Facilities							
Name of Center	# of Stations						
PSKC Everett	25						
DaVita Everett	12						
DaVita Pilchuk	13						
NKC Everett	10						
PSKC Monroe	12						
Total	72						
Source: Northwest Renal Network / Comagine ESRD Network 16 data 2018-2023							
Most recent year-end data: 2023 posted 02/02/2024							

2024
Snohomish County 2
ESRD Need Projection Methodology

x	y	Linear							
2019	291	286							
2020	274	286							
2021	294	285							
2022	284	285							
2023	284	285							
2024		284.20							
2025		283.80							
2026		283.40							
2027		283.00							
2028		282.60							
SUMMARY OUTPUT									
<i>Regression Statistics</i>									
Multiple R	0.081786082								
R Square	0.006688963								
Adjusted R Square	-0.324414716								
Standard Error	8.899438185								
Observations	5								
ANOVA									
	<i>df</i>	<i>SS</i>	<i>MS</i>	<i>F</i>	<i>Significance F</i>				
Regression	1	1.6	1.6	0.02020202	0.895982934				
Residual	3	237.6	79.2						
Total	4	239.2							
	<i>Coefficients</i>	<i>Standard Error</i>	<i>t Stat</i>	<i>P-value</i>	<i>Lower 95%</i>	<i>Upper 95%</i>	<i>Lower 95.0%</i>	<i>Upper 95.0%</i>	
Intercept	1093.8	5687.599543	0.192313118	0.859778773	-17006.68015	19194.28015	-17006.7	19194.28	
X Variable 1	-0.4	2.814249456	-0.142133811	0.895982934	-9.356197783	8.556197783	-9.3562	8.556198	

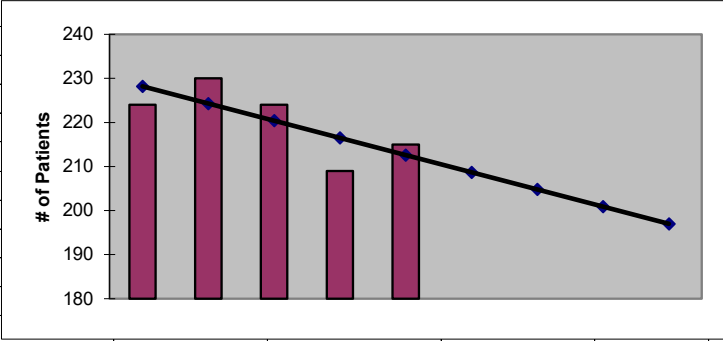


2024
Snohomish County 3
ESRD Need Projection Methodology

Planning Area		6 Year Utilization Data - Resident Incenter Patients					
Snohomish 3		2018	2019	2020	2021	2022	2023
98012		36	37	43	33	32	32
98020		7	5	8	9	6	9
98021		24	22	20	19	14	16
98026		19	22	28	27	25	15
98036		35	40	38	39	40	41
98037		28	23	28	30	28	30
98043		22	23	19	21	20	22
98087		34	41	36	34	30	34
98296		12	11	10	12	14	16
TOTALS		217	224	230	224	209	215
246-310-812(4)(a)	Rate of Change		3.23%	2.68%	-2.61%	-6.70%	2.87%
	6% Growth or Greater?		FALSE	FALSE	FALSE	FALSE	FALSE
	Regression Method:	Linear					
246-310-812(4)(c)			Year 1	Year 2	Year 3	Year 4	Year 5
			2024	2025	2026	2027	2028
Projected Resident Incenter Patients	from 246-310-812(4)(b)		208.70	204.80	200.90	197.00	193.10
Station Need for Patients	Divide Resident Incenter by 4.8		43.48	42.67	41.85	41.04	40.23
	Rounded to next whole number		44	43	42	42	41
246-310-812(4)(d)	subtract (4)(c) from approved stations						
Existing CN Approved Stations	Total		61	61	61	61	61
Results of (4)(c) above			44	43	42	42	41
Net Station Need			17	18	19	19	20
Negative number indicates need for stations							
Planning Area Facilities							
Name of Center	# of Stations						
PSKC- South	31						
PSKC-Lynnwood	14						
DaVita Mill Creek	11						
DaVita Lynnwood	5						
Total	61						
Source: Northwest Renal Network / Comagine ESRD Network 16 data 2018-2023							
Most recent year-end data: 2023 posted 02/02/2024							

2024
Snohomish County 3
ESRD Need Projection Methodology

x	y	Linear							
2019	224	228							
2020	230	224							
2021	224	220							
2022	209	216							
2023	215	213							
2024		208.70							
2025		204.80							
2026		200.90							
2027		197.00							
2028		193.10							
SUMMARY OUTPUT									
<i>Regression Statistics</i>									
Multiple R	0.740743747								
R Square	0.548701299								
Adjusted R Square	0.398268398								
Standard Error	6.457553716								
Observations	5								
ANOVA									
	<i>df</i>	<i>SS</i>	<i>MS</i>	<i>F</i>	<i>Significance F</i>				
Regression	1	152.1	152.1	3.647482014	0.152150213				
Residual	3	125.1	41.7						
Total	4	277.2							
	<i>Coefficients</i>	<i>Standard Error</i>	<i>t Stat</i>	<i>P-value</i>	<i>Lower 95%</i>	<i>Upper 95%</i>	<i>Lower 95.0%</i>	<i>Upper 95.0%</i>	
Intercept	8102.3	4126.999795	1.963242162	0.144394799	-5031.65525	21236.25525	-5031.66	21236.26	
X Variable 1	-3.9	2.042057786	-1.909838217	0.152150213	-10.39873926	2.598739255	-10.3987	2.598739	

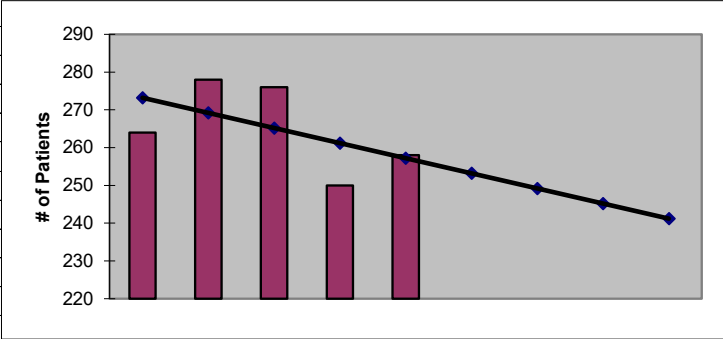


2024
Spokane County 1
ESRD Need Projection Methodology

Planning Area		6 Year Utilization Data - Resident Incenter Patients					
Spokane 1		2018	2019	2020	2021	2022	2023
99001		2	5	7	8	11	13
99004		10	12	13	13	14	16
99011		0	0	0	1	0	1
99012		0	0	0	1	0	0
99016		13	12	14	12	12	14
99018		0	0	1	1	0	0
99019		4	4	2	6	10	11
99022		6	7	6	7	4	6
99023		1	1	1	1	0	0
99030		0	0	0	1	1	1
99031		0	0	0	1	1	1
99036		1	1	0	0	0	0
99037		10	7	9	7	7	9
99201		20	21	24	17	12	16
99202		30	34	32	20	23	24
99203		14	11	14	12	14	12
99204		6	5	8	6	5	5
99206		41	45	48	50	41	40
99212		19	19	20	29	19	20
99216		25	33	38	35	37	34
99223		31	32	29	29	22	21
99224		16	15	12	19	17	14
TOTALS		249	264	278	276	250	258
246-310-812(4)(a)	Rate of Change		6.02%	5.30%	-0.72%	-9.42%	3.20%
	6% Growth or Greater?		TRUE	FALSE	FALSE	FALSE	FALSE
	Regression Method:	Linear					
246-310-812(4)(c)			Year 1	Year 2	Year 3	Year 4	Year 5
			2024	2025	2026	2027	2028
Projected Resident Incenter Patients	from 246-310-812(4)(b)		253.20	249.20	245.20	241.20	237.20
Station Need for Patients	Divide Resident Incenter by 4.8		52.75	51.92	51.08	50.25	49.42
	Rounded to next whole number		53	52	52	51	50
246-310-812(4)(d)	subtract (4)(c) from approved stations						
Existing CN Approved Stations	Total		71	71	71	71	71
Results of (4)(c) above			53	52	52	51	50
Net Station Need			18	19	19	20	21
Negative number indicates need for stations							
Planning Area Facilities							
Name of Center	# of Stations						
DaVita Downtown Spok	14						
DaVita Spokane Valley F	12						
FMC Spokane Kidney	25						
FMC Valley Dialysis	20						
Total	71						
Source: Northwest Renal Network / Comagine ESRD Network 16 data 2018-2023							
Most recent year-end data: 2023 posted 02/02/2024							

2024
Spokane County 1
ESRD Need Projection Methodology

x	y	Linear							
2019	264	273							
2020	278	269							
2021	276	265							
2022	250	261							
2023	258	257							
2024		253.20							
2025		249.20							
2026		245.20							
2027		241.20							
2028		237.20							
SUMMARY OUTPUT									
<i>Regression Statistics</i>									
Multiple R	0.532246295								
R Square	0.283286119								
Adjusted R Square	0.044381492								
Standard Error	11.61608081								
Observations	5								
ANOVA									
	df	SS	MS	F	Significance F				
Regression	1	160	160	1.185770751	0.355838918				
Residual	3	404.8	134.9333333						
Total	4	564.8							
Coefficients									
	Coefficients	Standard Error	t Stat	P-value	Lower 95%	Upper 95%	Lower 95.0%	Upper 95.0%	
Intercept	8349.2	7423.796258	1.124653709	0.342598516	-15276.63297	31975.03297	-15276.6	31975.03	
X Variable 1	-4	3.673327284	-1.088931013	0.355838918	-15.69016684	7.690166842	-15.6902	7.690167	

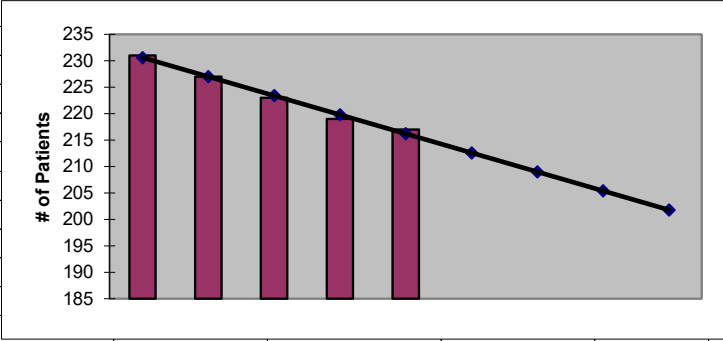


2024
Spokane County 2
ESRD Need Projection Methodology

Planning Area		6 Year Utilization Data - Resident Incenter Patients					
Spokane 2		2018	2019	2020	2021	2022	2023
99003		5	8	10	6	3	6
99005		6	5	3	2	2	5
99006		11	13	14	13	10	13
99009		6	5	4	4	5	2
99021		10	8	3	2	5	9
99025		4	3	3	1	1	2
99026		8	9	10	6	5	3
99027		7	5	4	3	3	2
99205		50	52	49	55	44	49
99207		42	44	44	42	47	42
99208		44	44	42	48	52	48
99217		18	18	23	23	26	24
99218		27	17	18	18	16	12
99251		0	0	0	0	0	0
TOTALS		238	231	227	223	219	217
246-310-812(4)(a)	Rate of Change		-2.94%	-1.73%	-1.76%	-1.79%	-0.91%
	6% Growth or Greater?		FALSE	FALSE	FALSE	FALSE	FALSE
	Regression Method:	Linear					
246-310-812(4)(c)			Year 1	Year 2	Year 3	Year 4	Year 5
			2024	2025	2026	2027	2028
Projected Resident Incenter Patients	from 246-310-812(4)(b)		212.60	209.00	205.40	201.80	198.20
Station Need for Patients	Divide Resident Incenter by 4.8		44.29	43.54	42.79	42.04	41.29
	Rounded to next whole number		45	44	43	43	42
246-310-812(4)(d)	subtract (4)(c) from approved stations						
Existing CN Approved Stations	Total		57	57	57	57	57
Results of (4)(c) above			45	44	43	43	42
Net Station Need			12	13	14	14	15
Negative number indicates need for stations							
Planning Area Facilities							
Name of Center	# of Stations						
DaVita North Spokane R	12						
DaVita New Facility	16						
FMC Northpointe	24						
FMC Panorama	5						
Total	57						
Source: Northwest Renal Network / Comagine ESRD Network 16 data 2018-2023							
Most recent year-end data: 2023 posted 02/02/2024							

2024
Spokane County 2
ESRD Need Projection Methodology

x	y	Linear							
2019	231	231							
2020	227	227							
2021	223	223							
2022	219	220							
2023	217	216							
2024		212.60							
2025		209.00							
2026		205.40							
2027		201.80							
2028		198.20							
SUMMARY OUTPUT									
<i>Regression Statistics</i>									
Multiple R	0.993883735								
R Square	0.987804878								
Adjusted R Square	0.983739837								
Standard Error	0.730296743								
Observations	5								
ANOVA									
	df	SS	MS	F	Significance F				
Regression	1	129.6	129.6	243	0.000573673				
Residual	3	1.6	0.533333333						
Total	4	131.2							
Coefficients									
	Coefficients	Standard Error	t Stat	P-value	Lower 95%	Upper 95%	Lower 95.0%	Upper 95.0%	
Intercept	7499	466.7300719	16.0671027	0.000524366	6013.656607	8984.343393	6013.657	8984.343	
X Variable 1	-3.6	0.230940108	-15.58845727	0.000573673	-4.334954492	-2.86504551	-4.33495	-2.86505	

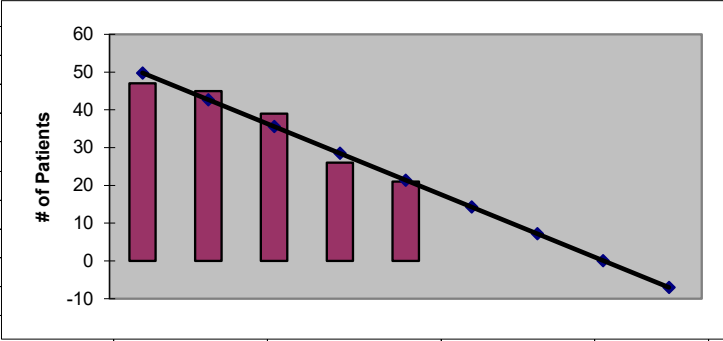


2024
Stevens County
ESRD Need Projection Methodology

Planning Area		6 Year Utilization Data - Resident Incenter Patients					
Stevens	2018	2019	2020	2021	2022	2023	
Stevens County	33	47	45	39	26	21	
TOTALS	33	47	45	39	26	21	
246-310-812(4)(a)	Rate of Change		42.42%	-4.26%	-13.33%	-33.33%	-19.23%
	6% Growth or Greater?		TRUE	FALSE	FALSE	FALSE	FALSE
	Regression Method:	Linear					
246-310-812(4)(c)		Year 1	Year 2	Year 3	Year 4	Year 5	
		2024	2025	2026	2027	2028	
Projected Resident Incenter Patients	from 246-310-812(4)(b)	14.30	7.20	0.10	-7.00	-14.10	
Station Need for Patients	Divide Resident Incenter by 3.2	4.47	2.25	0.03	-2.19	-4.41	
	Rounded to next whole number	5	3	1	-3	-5	
246-310-812(4)(d)	subtract (4)(c) from approved stations						
Existing CN Approved Stations	Total	16	16	16	16	16	
Results of (4)(c) above		5	3	1	-3	-5	
Net Station Need		11	13	15	19	21	
Negative number indicates need for stations							
Planning Area Facilities							
Name of Center	# of Stations						
FMC Colville	10						
DaVita Colville	6						
Total	16						
Source: Northwest Renal Network / Comagine ESRD Network 16 data 2018-2023							
Most recent year-end data: 2023 posted 02/02/2024							

**2024
Stevens County
ESRD Need Projection Methodology**

x	y	Linear							
2019	47	50							
2020	45	43							
2021	39	36							
2022	26	29							
2023	21	21							
2024		14.30							
2025		7.20							
2026		0.10							
2027		-7.00							
2028		-14.10							
SUMMARY OUTPUT									
<i>Regression Statistics</i>									
Multiple R	0.970510629								
R Square	0.941890882								
Adjusted R Square	0.922521176								
Standard Error	3.219730838								
Observations	5								
ANOVA									
	df	SS	MS	F	Significance F				
Regression	1	504.1	504.1	48.62700965	0.006052038				
Residual	3	31.1	10.36666667						
Total	4	535.2							
	Coefficients	Standard Error	t Stat	P-value	Lower 95%	Upper 95%	Lower 95.0%	Upper 95.0%	
Intercept	14384.7	2057.718618	6.990605944	0.006009299	7836.120988	20933.27901	7836.121	20933.28	
X Variable 1	-7.1	1.01816829	-6.973306938	0.006052038	-10.34026591	-3.85973409	-10.3403	-3.85973	

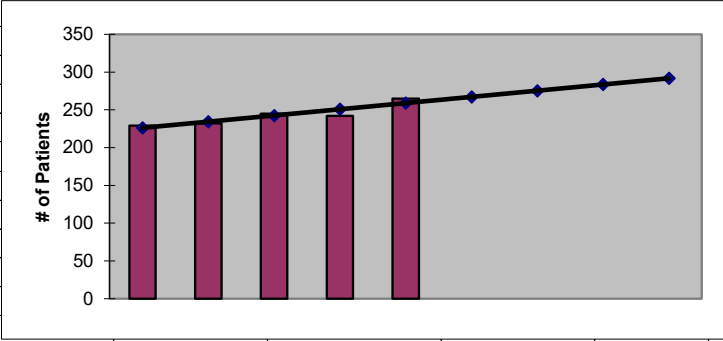


2024
Thurston County
ESRD Need Projection Methodology

Planning Area		6 Year Utilization Data - Resident Incenter Patients					
Thurston	2018	2019	2020	2021	2022	2023	
Thurston County	241	229	232	245	242	265	
TOTALS	241	229	232	245	242	265	
246-310-812(4)(a)	Rate of Change		-4.98%	1.31%	5.60%	-1.22%	9.50%
	6% Growth or Greater?		FALSE	FALSE	FALSE	FALSE	TRUE
	Regression Method:	Linear					
246-310-812(4)(c)		Year 1	Year 2	Year 3	Year 4	Year 5	
		2024	2025	2026	2027	2028	
Projected Resident Incenter Patients	from 246-310-812(4)(b)	267.20	275.40	283.60	291.80	300.00	
Station Need for Patients	Divide Resident Incenter by 4.8	55.67	57.38	59.08	60.79	62.50	
	Rounded to next whole number	56	58	60	61	63	
246-310-812(4)(d)	subtract (4)(c) from approved stations						
Existing CN Approved Stations	Total	61	61	61	61	61	
Results of (4)(c) above		56	58	60	61	63	
Net Station Need		5	3	1	0	-2	
Negative number indicates need for stations							
Planning Area Facilities							
Name of Center	# of Stations						
FMC-Lacey	14						
DaVita Olympia	6						
FMC-North Thurston	12						
DaVita Lacey	19						
DaVita Tumwater	10						
Total	61						
Source: Northwest Renal Network / Comagine ESRD Network 16 data 2018-2023							
Most recent year-end data: 2023 posted 02/02/2024							

2024
Thurston County
ESRD Need Projection Methodology

x	y	Linear							
2019	229	226							
2020	232	234							
2021	245	243							
2022	242	251							
2023	265	259							
2024		267.20							
2025		275.40							
2026		283.60							
2027		291.80							
2028		300.00							
SUMMARY OUTPUT									
<i>Regression Statistics</i>									
Multiple R	0.913822757								
R Square	0.835072032								
Adjusted R Square	0.780096042								
Standard Error	6.653319973								
Observations	5								
ANOVA									
	df	SS	MS	F	Significance F				
Regression	1	672.4	672.4	15.18975904	0.029972826				
Residual	3	132.8	44.26666667						
Total	4	805.2							
	Coefficients	Standard Error	t Stat	P-value	Lower 95%	Upper 95%	Lower 95.0%	Upper 95.0%	
Intercept	-16329.6	4252.113319	-3.840349204	0.031142132	-29861.72232	-2797.47768	-29861.7	-2797.48	
X Variable 1	8.2	2.103964512	3.897404141	0.029972826	1.504245913	14.89575409	1.504246	14.89575	

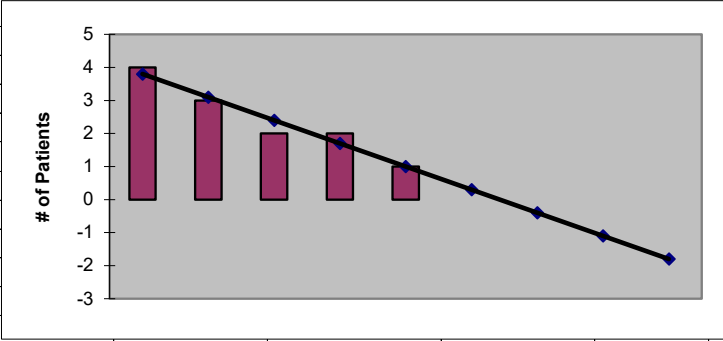


2024
Wahkiakum County
ESRD Need Projection Methodology

Planning Area		6 Year Utilization Data - Resident Incenter Patients					
Wahkiakum		2018	2019	2020	2021	2022	2023
Wahkiakum County		4	4	3	2	2	1
TOTALS		4	4	3	2	2	1
246-310-812(4)(a)	Rate of Change		0.00%	-25.00%	-33.33%	0.00%	-50.00%
	6% Growth or Greater?		FALSE	FALSE	FALSE	FALSE	FALSE
	Regression Method:	Linear					
246-310-812(4)(c)			Year 1	Year 2	Year 3	Year 4	Year 5
			2024	2025	2026	2027	2028
Projected Resident Incenter Patients	from 246-310-812(4)(b)		0.30	-0.40	-1.10	-1.80	-2.50
Station Need for Patients	Divide Resident Incenter by 3.2		0.09	-0.13	-0.34	-0.56	-0.78
	Rounded to next whole number		1	-1	-1	-1	-1
246-310-812(4)(d)	subtract (4)(c) from approved stations						
Existing CN Approved Stations	Total		0	0	0	0	0
Results of (4)(c) above			1	-1	-1	-1	-1
Net Station Need			-1	1	1	1	1
Negative number indicates need for stations							
Planning Area Facilities							
Name of Center	# of Stations						
None	0						
Total	0						
Source: Northwest Renal Network / Comagine ESRD Network 16 data 2018-2023							
Most recent year-end data: 2023 posted 02/02/2024							

2024
Wahkiakum County
ESRD Need Projection Methodology

x	y	Linear							
2019	4	4							
2020	3	3							
2021	2	2							
2022	2	2							
2023	1	1							
2024		0.30							
2025		-0.40							
2026		-1.10							
2027		-1.80							
2028		-2.50							
SUMMARY OUTPUT									
<i>Regression Statistics</i>									
Multiple R	0.970725343								
R Square	0.942307692								
Adjusted R Square	0.923076923								
Standard Error	0.316227766								
Observations	5								
ANOVA									
	df	SS	MS	F	Significance F				
Regression	1	4.9	4.9	49	0.005986256				
Residual	3	0.3	0.1						
Total	4	5.2							
	Coefficients	Standard Error	t Stat	P-value	Lower 95%	Upper 95%	Lower 95.0%	Upper 95.0%	
Intercept	1417.1	202.1000495	7.011873593	0.005957297	773.9274442	2060.272556	773.9274	2060.273	
X Variable 1	-0.7	0.1	-7	0.005986256	-1.018244631	-0.38175537	-1.01824	-0.38176	

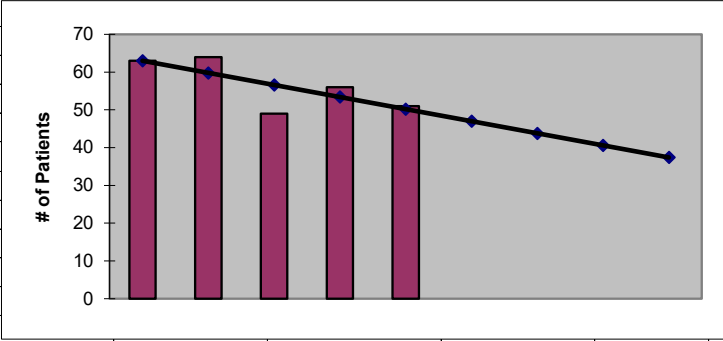


**Walla Walla County
ESRD Need Projection Methodology**

Planning Area		6 Year Utilization Data - Resident Incenter Patients					
Walla Walla		2018	2019	2020	2021	2022	2023
Walla Walla County		59	63	64	49	56	51
TOTALS		59	63	64	49	56	51
246-310-812(4)(a)	Rate of Change		6.78%	1.59%	-23.44%	14.29%	-8.93%
	6% Growth or Greater?		TRUE	FALSE	FALSE	TRUE	FALSE
	Regression Method:	Linear					
246-310-812(4)(c)			Year 1	Year 2	Year 3	Year 4	Year 5
			2024	2025	2026	2027	2028
Projected Resident Incenter Patients	from 246-310-812(4)(b)		47.00	43.80	40.60	37.40	34.20
Station Need for Patients	Divide Resident Incenter by 4.8		9.79	9.13	8.46	7.79	7.13
	Rounded to next whole number		10	10	9	8	8
246-310-812(4)(d)	subtract (4)(c) from approved stations						
Existing CN Approved Stations	Total		16	16	16	16	16
Results of (4)(c) above			10	10	9	8	8
Net Station Need			6	6	7	8	8
Negative number indicates need for stations							
Planning Area Facilities							
Name of Center	# of Stations						
QualiCenter Walla Walla	16						
Total	16						
Source: Northwest Renal Network / Comagine ESRD Network 16 data 2018-2023							
Most recent year-end data: 2023 posted 02/02/2024							

2024
Walla Walla County
ESRD Need Projection Methodology

x	y	Linear							
2019	63	63							
2020	64	60							
2021	49	57							
2022	56	53							
2023	51	50							
2024		47.00							
2025		43.80							
2026		40.60							
2027		37.40							
2028		34.20							
SUMMARY OUTPUT									
<i>Regression Statistics</i>									
Multiple R	0.74358306								
R Square	0.552915767								
Adjusted R Square	0.403887689								
Standard Error	5.253570215								
Observations	5								
ANOVA									
	df	SS	MS	F	Significance F				
Regression	1	102.4	102.4	3.710144928	0.149727292				
Residual	3	82.8	27.6						
Total	4	185.2							
	Coefficients	Standard Error	t Stat	P-value	Lower 95%	Upper 95%	Lower 95.0%	Upper 95.0%	
Intercept	6523.8	3357.538187	1.943030767	0.147274184	-4161.384999	17208.985	-4161.38	17208.98	
X Variable 1	-3.2	1.661324773	-1.926173649	0.149727292	-8.487076884	2.087076884	-8.48708	2.087077	

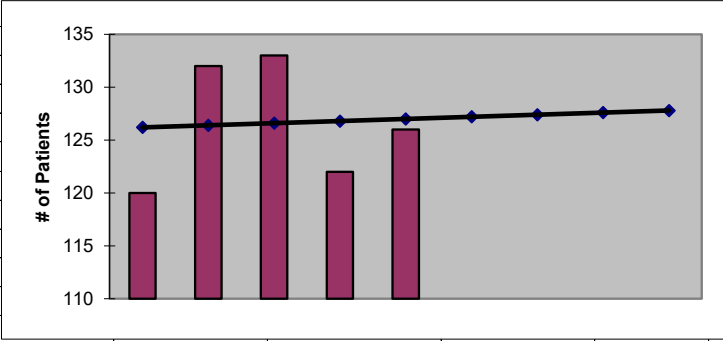


2024
Whatcom County
ESRD Need Projection Methodology

Planning Area		6 Year Utilization Data - Resident Incenter Patients					
Whatcom	2018	2019	2020	2021	2022	2023	
Whatcom County	123	120	132	133	122	126	
TOTALS	123	120	132	133	122	126	
246-310-812(4)(a)	Rate of Change		-2.44%	10.00%	0.76%	-8.27%	3.28%
	6% Growth or Greater?		FALSE	TRUE	FALSE	FALSE	FALSE
	Regression Method:	Linear					
246-310-812(4)(c)		Year 1	Year 2	Year 3	Year 4	Year 5	
		2024	2025	2026	2027	2028	
Projected Resident Incenter Patients	from 246-310-812(4)(b)	127.20	127.40	127.60	127.80	128.00	
Station Need for Patients	Divide Resident Incenter by 4.8	26.50	26.54	26.58	26.63	26.67	
	Rounded to next whole number	27	27	27	27	27	
246-310-812(4)(d)	subtract (4)(c) from approved stations						
Existing CN Approved Stations	Total	32	32	32	32	32	
Results of (4)(c) above		27	27	27	27	27	
Net Station Need		5	5	5	5	5	
Negative number indicates need for stations							
Planning Area Facilities							
Name of Center	# of Stations						
Mt. Baker Kidney Center	26						
Ferndale Dialysis Center	6						
Total	32						
Source: Northwest Renal Network / Comagine ESRD Network 16 data 2018-2023							
Most recent year-end data: 2023 posted 02/02/2024							

2024
Whatcom County
ESRD Need Projection Methodology

x	y	Linear							
2019	120	126							
2020	132	126							
2021	133	127							
2022	122	127							
2023	126	127							
2024		127.20							
2025		127.40							
2026		127.60							
2027		127.80							
2028		128.00							
SUMMARY OUTPUT									
<i>Regression Statistics</i>									
Multiple R	0.054392829								
R Square	0.00295858								
Adjusted R Square	-0.32938856								
Standard Error	6.703233051								
Observations	5								
ANOVA									
	<i>df</i>	<i>SS</i>	<i>MS</i>	<i>F</i>	<i>Significance F</i>				
Regression	1	0.4	0.4	0.008902077	0.930779063				
Residual	3	134.8	44.93333333						
Total	4	135.2							
	<i>Coefficients</i>	<i>Standard Error</i>	<i>t Stat</i>	<i>P-value</i>	<i>Lower 95%</i>	<i>Upper 95%</i>	<i>Lower 95.0%</i>	<i>Upper 95.0%</i>	
Intercept	-277.6	4284.012591	-0.064799063	0.952410264	-13911.24004	13356.04004	-13911.2	13356.04	
X Variable 1	0.2	2.119748413	0.09435082	0.930779063	-6.545985504	6.945985504	-6.54599	6.945986	

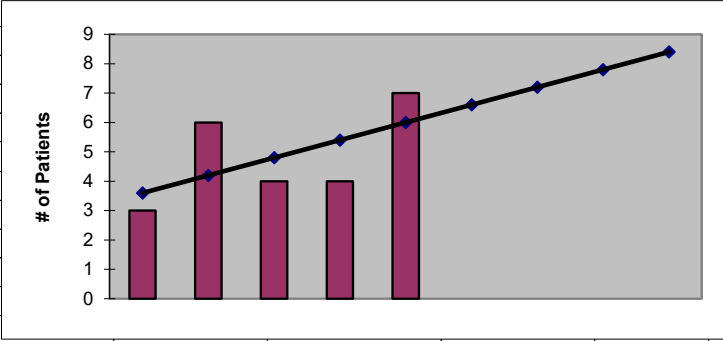


2024
Whitman County
ESRD Need Projection Methodology

Planning Area		6 Year Utilization Data - Resident Incenter Patients					
Whitman	2018	2019	2020	2021	2022	2023	
Whitman County	13	3	6	4	4	7	
TOTALS	13	3	6	4	4	7	
246-310-812(4)(a)	Rate of Change		-76.92%	100.00%	-33.33%	0.00%	75.00%
	6% Growth or Greater?		FALSE	TRUE	FALSE	FALSE	TRUE
	Regression Method:	Linear					
246-310-812(4)(c)		Year 1	Year 2	Year 3	Year 4	Year 5	
		2024	2025	2026	2027	2028	
Projected Resident Incenter Patients	from 246-310-812(4)(b)	6.60	7.20	7.80	8.40	9.00	
Station Need for Patients	Divide Resident Incenter by 3.2	2.06	2.25	2.44	2.63	2.81	
	Rounded to next whole number	3	3	3	3	3	
246-310-812(4)(d)	subtract (4)(c) from approved stations						
Existing CN Approved Stations	Total	0	0	0	0	0	
Results of (4)(c) above		3	3	3	3	3	
Net Station Need		-3	-3	-3	-3	-3	
Negative number indicates need for stations							
Planning Area Facilities							
Name of Center	# of Stations						
None	0						
Total	0						
Source: Northwest Renal Network / Comagine ESRD Network 16 data 2018-2023							
Most recent year-end data: 2023 posted 02/02/2024							

2024
Whitman County
ESRD Need Projection Methodology

x	y	Linear							
2019	3	4							
2020	6	4							
2021	4	5							
2022	4	5							
2023	7	6							
2024		6.60							
2025		7.20							
2026		7.80							
2027		8.40							
2028		9.00							
SUMMARY OUTPUT									
<i>Regression Statistics</i>									
Multiple R	0.577350269								
R Square	0.333333333								
Adjusted R Square	0.111111111								
Standard Error	1.549193338								
Observations	5								
ANOVA									
	df	SS	MS	F	Significance F				
Regression	1	3.6	3.6	1.5	0.308068009				
Residual	3	7.2	2.4						
Total	4	10.8							
	Coefficients	Standard Error	t Stat	P-value	Lower 95%	Upper 95%	Lower 95.0%	Upper 95.0%	
Intercept	-1207.8	990.0839964	-1.219896498	0.309656224	-4358.689156	1943.089156	-4358.69	1943.089	
X Variable 1	0.6	0.489897949	1.224744871	0.308068009	-0.959073916	2.159073916	-0.95907	2.159074	





2024
Yakima County
ESRD Need Projection Methodology

Planning Area		6 Year Utilization Data - Resident Incenter Patients					
Yakima		2018	2019	2020	2021	2022	2023
Yakima County		321	330	324	323	322	310
TOTALS		321	330	324	323	322	310
246-310-812(4)(a)	Rate of Change		2.80%	-1.82%	-0.31%	-0.31%	-3.73%
	6% Growth or Greater?		FALSE	FALSE	FALSE	FALSE	FALSE
	Regression Method:	Linear					
246-310-812(4)(c)			Year 1	Year 2	Year 3	Year 4	Year 5
			2024	2025	2026	2027	2028
Projected Resident Incenter Patients	from 246-310-812(4)(b)		309.20	305.00	300.80	296.60	292.40
Station Need for Patients	Divide Resident Incenter by 4.8		64.42	63.54	62.67	61.79	60.92
	Rounded to next whole number		65	64	63	62	61
246-310-812(4)(d)	subtract (4)(c) from approved stations						
Existing CN Approved Stations	Total		95	95	95	95	95
Results of (4)(c) above			65	64	63	62	61
Net Station Need			30	31	32	33	34
Negative number indicates need for stations							
Planning Area Facilities							
Name of Center	# of Stations						
Astria Yakima D C	26						
DaVita Mt. Adams	18						
DaVita Union Gap	13						
DaVita Wapato	6						
DaVita Yakima	23						
DaVita Zillah	9						
Total	95						
Source: Northwest Renal Network / Comagine ESRD Network 16 data 2018-2023							
Most recent year-end data: 2023 posted 02/02/2024							

2024
Yakima County
ESRD Need Projection Methodology

x	y	Linear							
2019	330	330							
2020	324	326							
2021	323	322							
2022	322	318							
2023	310	313							
2024		309.20							
2025		305.00							
2026		300.80							
2027		296.60							
2028		292.40							
SUMMARY OUTPUT									
<i>Regression Statistics</i>									
Multiple R	0.910465468								
R Square	0.828947368								
Adjusted R Square	0.771929825								
Standard Error	3.483293461								
Observations	5								
ANOVA									
	df	SS	MS	F	Significance F				
Regression	1	176.4	176.4	14.53846154	0.031724839				
Residual	3	36.4	12.13333333						
Total	4	212.8							
	Coefficients	Standard Error	t Stat	P-value	Lower 95%	Upper 95%	Lower 95.0%	Upper 95.0%	
Intercept	8810	2226.16056	3.957486336	0.028801742	1725.36355	15894.63645	1725.364	15894.64	
X Variable 1	-4.2	1.101514109	-3.812933456	0.031724839	-7.705509508	-0.69449049	-7.70551	-0.69449	

